

HI-VOR or TACAN RWY 34L

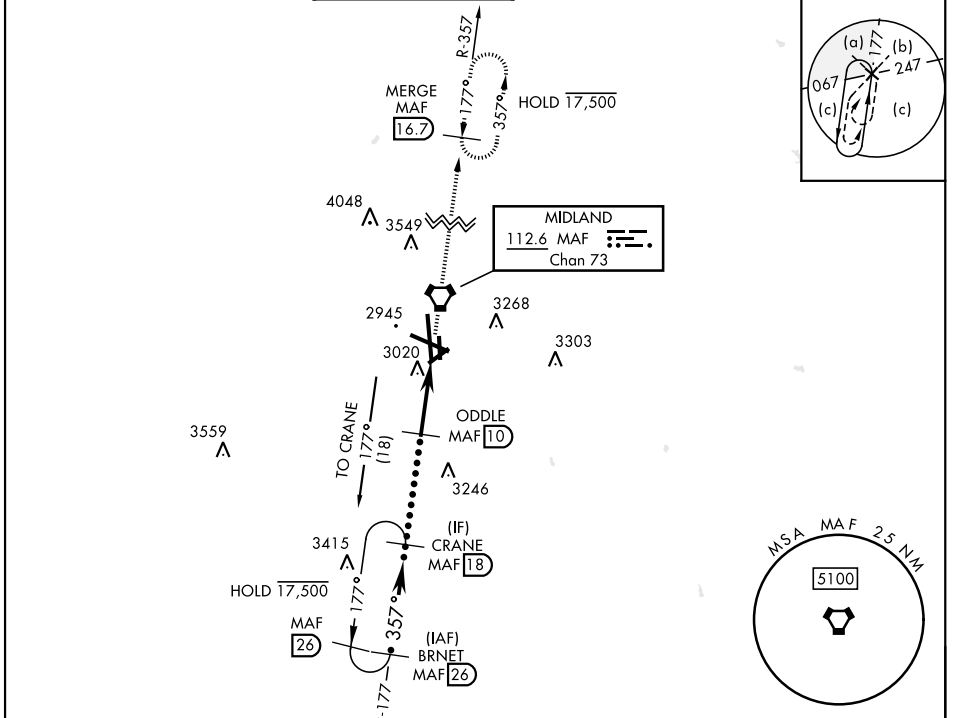
VORTAC MAF 112.6 Chan 73	APCH CRS 357°	Rwy Idg TDZE Arprt Elev 9501 2858 2872	[USAF] MIDLAND INTL AIR AND SPACE PORT (KMAF)
--	-------------------------	--	---

DME required

▼ * Circling Rwy 16L not authorized at night.

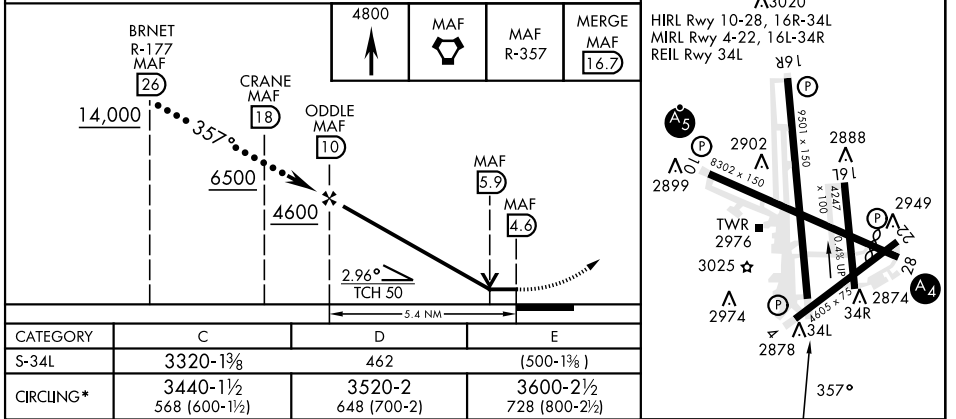
MISSED APPROACH: Climb to 4800 direct MAF VORTAC and on MAF VORTAC R-357 to MERGE/MAF 16.7 DME and hold.

ATIS ★ 126.8 235.975	APP CON ★ 124.6 290.4	TOWER ★ 118.7(CTAF) 273.45	GND CON 121.9 348.6	CLNC DEL 118.05 317.65	UNICOM 122.95
--------------------------------	---------------------------------	--------------------------------------	-------------------------------	----------------------------------	-------------------------



EMERG SAFE ALT 100 NM 7000

ELEV 2872	TDZE 2858
-----------	-----------



CATEGORY	C	D	E
S-34L	3320-1 $\frac{3}{8}$	462	(500-1 $\frac{3}{8}$)
CIRCUING*	3440-1 $\frac{1}{2}$ 568 (600-1 $\frac{1}{2}$)	3520-2 648 (700-2)	3600-2 $\frac{1}{2}$ 728 (800-2 $\frac{1}{2}$)

HI-VOR or TACAN RWY 34L

SC-3, 11 JUN 2026 to 09 JUL 2026

SC-3, 11 JUN 2026 to 09 JUL 2026