

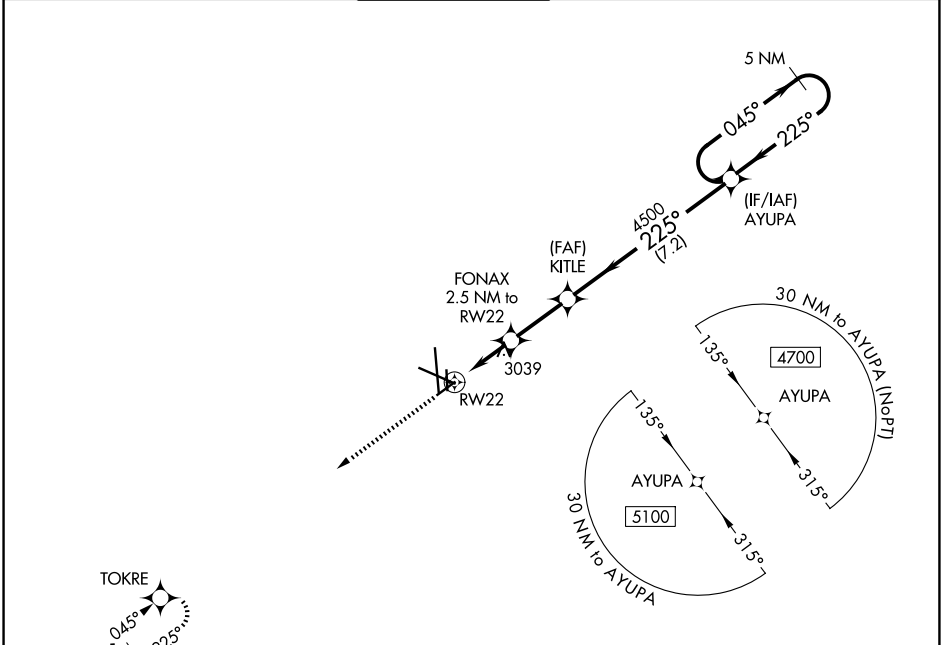
WAAS CH 50429 W22A	APP CRS 225°	Rwy Ldg TDZE Apt Elev	4605 2855 2872
--	------------------------	-----------------------------	---

RNAV (GPS) RWY 22

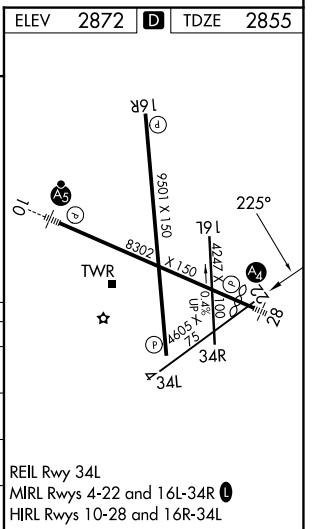
MIDLAND INTL AIR AND SPACE PORT (M.A.F.)

RNP APCH.	MISSED APPROACH: Climb to 5000 direct TOKRE and hold.
<p>▼ For uncompensated Baro-VNAV systems, LNAV/VNAV NA below -11°C or above 25°C. Circling Rwy 16L NA at night.</p>	

ATIS 126.8 235.975	MIDLAND APP CON * 124.6 290.4	MIDLAND TOWER * 118.7(CTAF) 0273.45	GND CON 121.9 348.6	UNICOM 122.95
------------------------------	---	---	-------------------------------	-------------------------



ELEV 5000	TOKRE	FONAX 2.5 NM to RW22	KITLE 4500	AYUPA 5 NM Holding Pattern
*LNAV only		*3700	4500	4700
	*1.3 NM to RW22			GP 3.00° TCH 50
CATEGORY	A	B	C	D
LPV DA		3055-3/4	200 (200-3/4)	
LNAV/VNAV DA		3317-13/8	462 (500-13/8)	
LNAV MDA	3320-1	465 (500-1)	3320-13/8	465 (500-13/8)
CIRCLING	3440-1	568 (600-1)	3440-1 1/2 568 (600-1 1/2)	3520-2 648 (700-2)



SC-3, 11 JUN 2026 to 09 JUL 2026

SC-3, 11 JUN 2026 to 09 JUL 2026