

MIDLAND, TEXAS

AL-258 (FAA)

25275

WAAS CH 66029 W 34A	APP CRS 346°	Rwy Ldg TDZE Apt Elev	9501 2858 2872
---	------------------------	-----------------------------	---

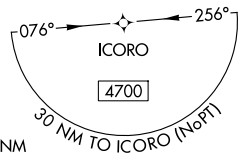
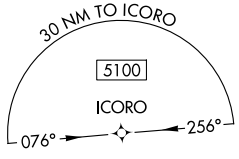
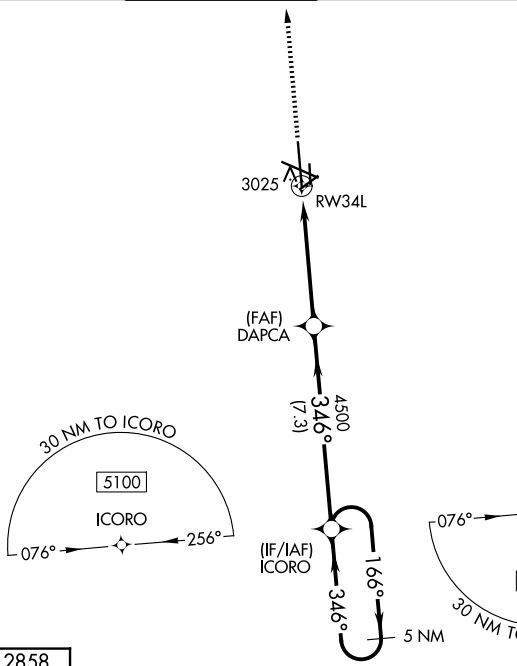
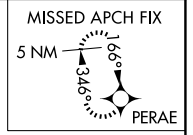
RNAV (GPS) RWY 34L

MIDLAND INTL AIR AND SPACE PORT (M.A.F.)

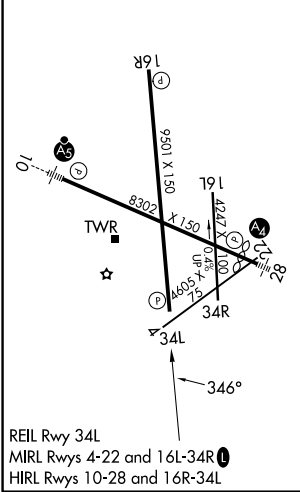
V For uncompensated Baro-VNAV systems, LNAV/VNAV NA below -11°C (13°F) or above 26°C (78°F). Circling Rwy 16L NA at night. DME/DME RNP-0.3 NA.

MISSED APPROACH: Climb to 5100 direct PERAE and hold.

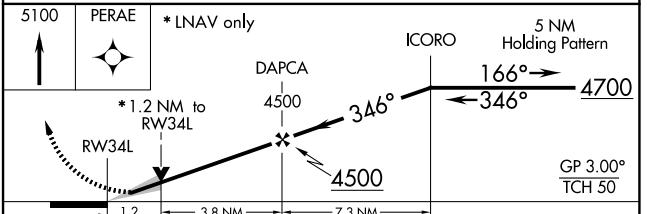
ATIS 126.8 235.975	MIDLAND APP CON* 124.6 290.4	MIDLAND TOWER* 118.7(CTAF) 0273.45	GND CON 121.9 348.6	UNICOM 122.95
------------------------------	--	--	-------------------------------	-------------------------



ELEV 2872	D	TDZE 2858
-----------	----------	-----------



REIL Rwy 34L
MIRL Rwy 4-22 and 16L-34R
HIRL Rwy 10-28 and 16R-34L



CATEGORY	A	B	C	D
LPV DA	3058- ³ / ₄		200 (200- ³ / ₄)	
LNAV/VNAV DA	3203-1 ¹ / ₈		345 (400-1 ¹ / ₈)	
LNAV MDA	3280-1	422 (500-1)	3280-1 ¹ / ₄	422 (500-1 ¹ / ₄)
CIRCLING	3440-1	568 (600-1)	3440-1 ¹ / ₂ 568 (600-1 ¹ / ₂)	3520-2 648 (700-2)

MIDLAND, TEXAS
Amdt 1B 22JUN17

MIDLAND INTL AIR AND SPACE PORT (M.A.F.)
31°57'N-102°12'W
RNAV (GPS) RWY 34L

SC-3, 11 JUN 2026 to 09 JUL 2026

SC-3, 11 JUN 2026 to 09 JUL 2026