

VORTAC MAF <b>112.6</b> Chan <b>73</b>	APP CRS <b>357°</b>	Rwy Ldg <b>9501</b> TDZE <b>2858</b> Apt Elev <b>2872</b>
--	------------------------	---

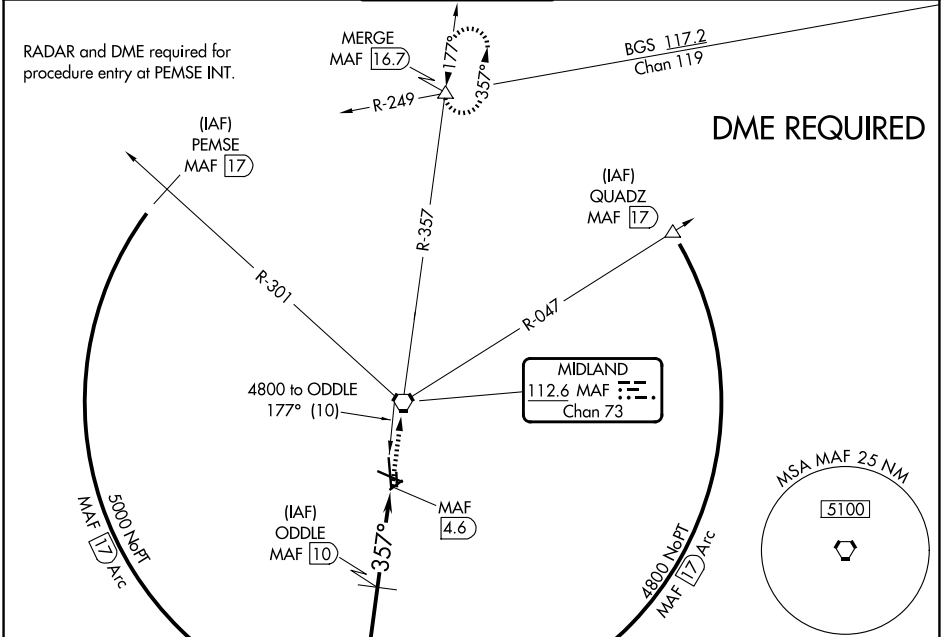
# VOR or TACAN RWY 34L

MIDLAND INTL AIR AND SPACE PORT (MAF)

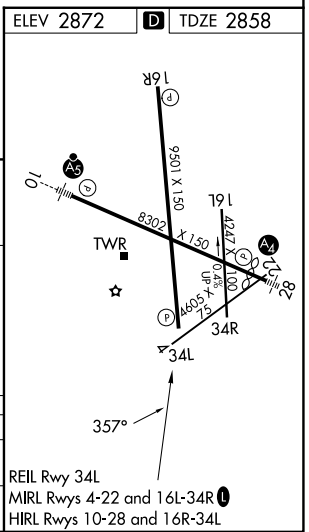
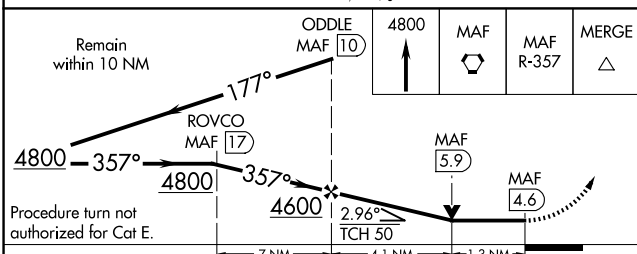
**⚠** Circling Rwy 16L NA at night. Rwy 34L helicopter visibility reduction below 3/4 SM NA. DME required.

**⚠** MISSED APPROACH: Climb to 4800 direct MAF VORTAC and on MAF VORTAC R-357 to MERGE INT/MAF 16.7 DME and hold.

ATIS <b>126.8 235.975</b>	MIDLAND APP CON* <b>124.6 290.4</b>	MIDLAND TOWER* <b>118.7 (CTAF) 273.45</b>	GND CON <b>121.9 348.6</b>	UNICOM <b>122.95</b>
------------------------------	--	--	-------------------------------	-------------------------



ELEV 2872	<b>D</b> TDZE 2858
-----------	--------------------



CATEGORY	A	B	C	D	E
S-34L	3320-1	462 (500-1)	3320-1 3/8	462 (500-1 1/8)	
CIRCLING	3440-1	568 (600-1)	3440-1 1/2 568 (600-1 1/2)	3520-2 648 (700-2)	3600-2 1/2 728 (800-2 1/2)

SC-3, 11 JUN 2026 to 09 JUL 2026

SC-3, 11 JUN 2026 to 09 JUL 2026