

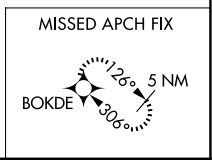
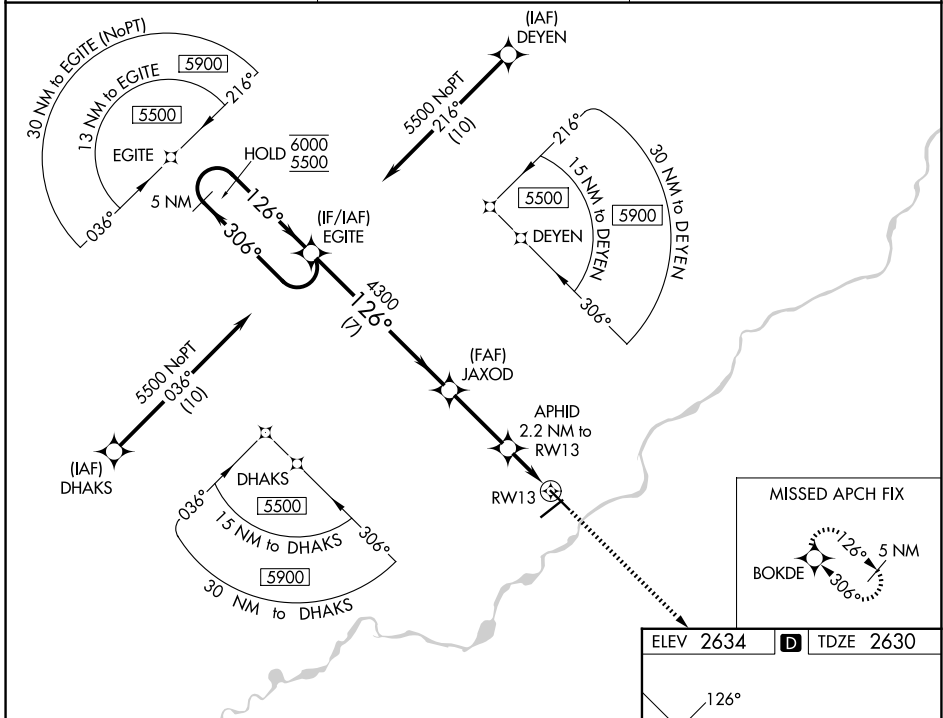
WAAS CH <b>97340</b> <b>W13A</b>	APP CRS <b>126°</b>	Rwy Ldg TDZE Apt Elev	<b>5624</b> <b>2630</b> <b>2634</b>
--	------------------------	-----------------------------	---

# RNAV (GPS) RWY 13

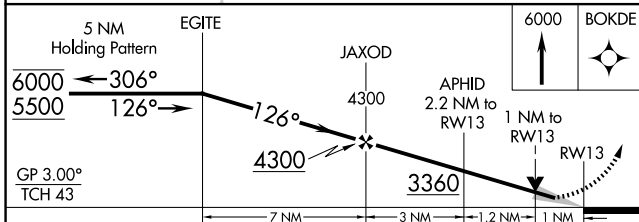
FRANK WILEY FLD (MLS)

RNP APCH - GPS.	MISSED APPROACH: Climb to 6000 direct BOKDE and hold, continue climb-in-hold to 6000.
<p>For uncompensated Baro-VNAV systems, procedure NA below -24°C or above 54°C.</p>	

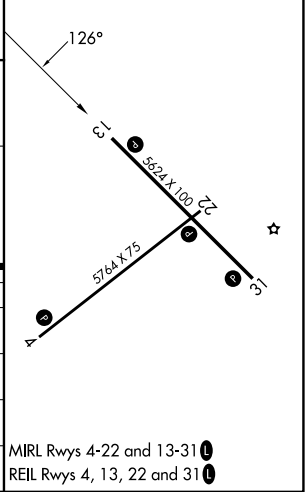
ASOS <b>135.575</b>	SALT LAKE CENTER <b>126.85 305.2</b>	UNICOM <b>123.0 (CTAF)</b>
------------------------	---	-------------------------------



ELEV 2634	<b>D</b> TDZE 2630
-----------	--------------------



CATEGORY	A	B	C	D
LPV DA		2880-1	250 (300-1)	
LNAV/VNAV DA		2880-1	250 (300-1)	
LNAV MDA		2980-1	350 (400-1)	
CIRCLING	3060-1 426 (500-1)	3100-1 466 (500-1)	3160-1½ 526 (600-1½)	3320-2¼ 686 (700-2¼)



NW-1, 11 JUN 2026 to 09 JUL 2026

NW-1, 11 JUN 2026 to 09 JUL 2026

MIRL Rwys 4-22 and 13-31  
REIL Rwys 4, 13, 22 and 31