

WAAS CH <b>77924</b> <b>W22A</b>	APP CRS <b>223°</b>	Rwy Ldg TDZE Apt Elev	<b>5764</b> <b>2630</b> <b>2634</b>
--	------------------------	-----------------------------	---

# RNAV (GPS) RWY 22

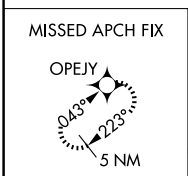
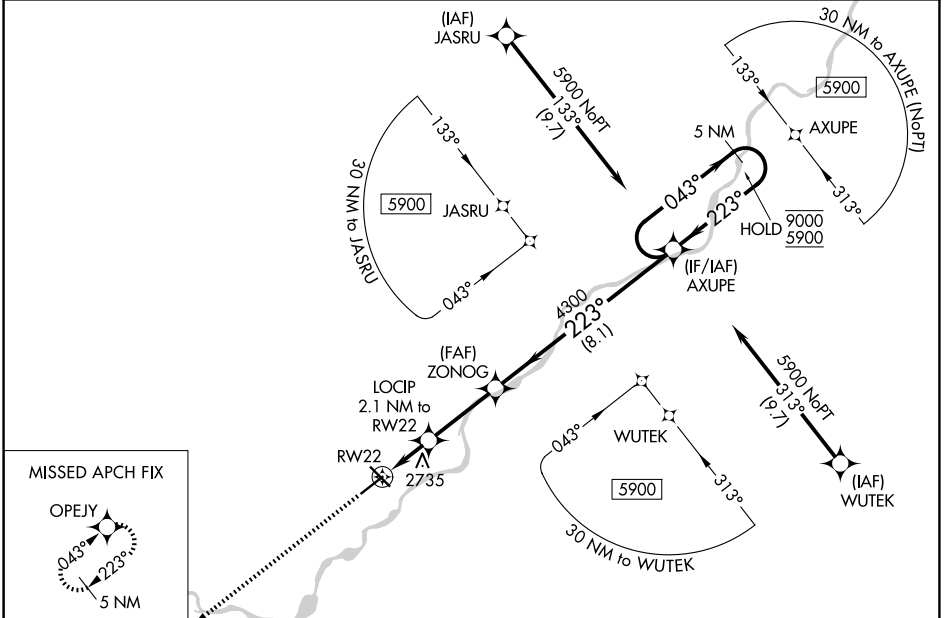
FRANK WILEY FLD (MLS)

RNP APCH-GPS.

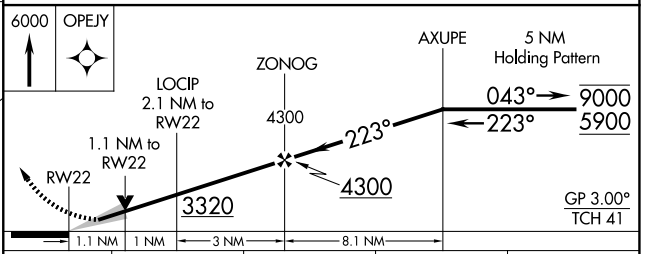
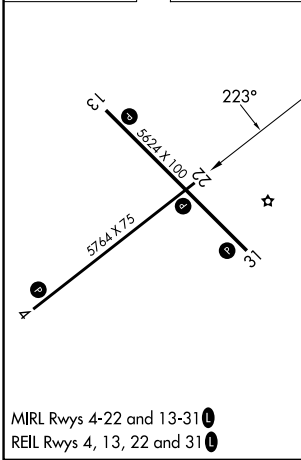
**⚠** Baro-VNAV and VDP NA when using Glendive altimeter setting. For uncompensated Baro-VNAV systems, LNAV/VNAV NA below -25°C or above 54°C. When local altimeter setting not received, use Glendive altimeter setting: increase LPV and LNAV/VNAV DA to 3047 and all visibilities ½ SM. Increase all MDA 180 feet and LNAV Cat C and D visibilities ¾ SM and Circling Cat C and D visibilities ½ SM.

MISSED APPROACH: Climb to 6000 direct OPEJY and hold, continue climb-in-hold to 6000.

ASOS <b>135.575</b>	SALT LAKE CENTER <b>126.85 305.2</b>	UNICOM <b>123.0 (CTAF) 0</b>
------------------------	---	---------------------------------



ELEV 2634	<b>D</b>	TDZE 2630
-----------	----------	-----------



CATEGORY	A	B	C	D
LPV DA		2880-1	250 (300-1)	
LNAV/VNAV DA		2880-1	250 (300-1)	
LNAV MDA		3000-1	370 (400-1)	
CIRCLING	3060-1 426 (500-1)	3100-1 466 (500-1)	3160-1½ 526 (600-1½)	3320-2¼ 686 (700-2¼)

NW-1, 11 JUN 2026 to 09 JUL 2026

NW-1, 11 JUN 2026 to 09 JUL 2026