

VOR/DME MLT	APP CRS	Rwy Idg	4713
117.9	319°	TDZE	408
Chan 126		Apt Elev	408

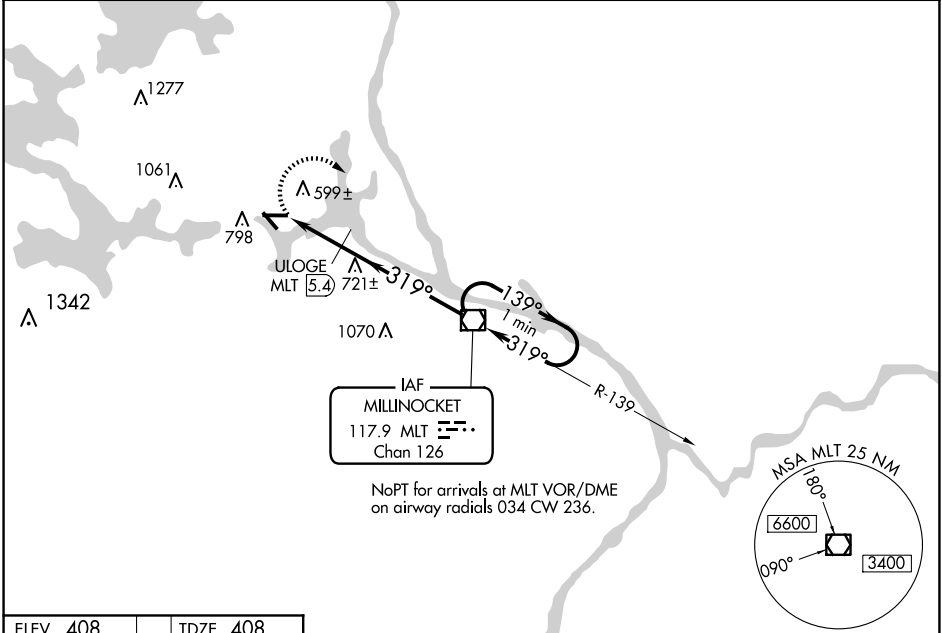
VOR RWY 29

MILLINOCKET MUNI (MLT)

⚠ Helicopter visibility reduction below 1 SM NA. When local altimeter setting not received, use Houlton altimeter setting and increase all MDA 120 feet, increase S-29 and Circling Cat A/B visibility ¼ SM, Cat C visibility ½ SM; increase S-29 Cat D visibility ½ SM; ULOGE fix minimums: increase S-29 Cat C/D and Circling Cat A/B visibility ¼ SM, and Circling Cat C visibility ½ SM. Procedure NA at night.

MISSED APPROACH: Climbing right turn to 3000 direct MLT VOR/DME and hold, continue climb-in-hold to 3000.

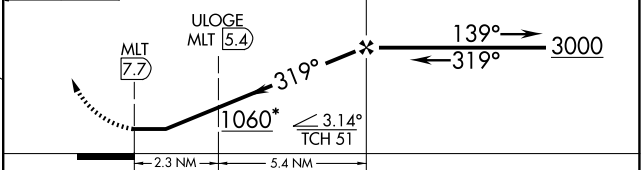
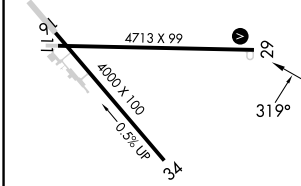
ASOS 135.225	BOSTON CENTER 120.25 346.4	UNICOM 122.8 (CTAF) Ⓛ
------------------------	--------------------------------------	--



NE-1, 11 JUN 2026 to 09 JUL 2026

NE-1, 11 JUN 2026 to 09 JUL 2026

ELEV 408	TDZE 408
----------	----------



CATEGORY	A	B	C	D
S-29	1060-1 652 (700-1)		1060-1¾ 652 (700-1¾)	1060-2 652 (700-2)
CIRCLING	1100-1 692 (700-1)		1100-2 692 (700-2)	1380-3 972 (1000-3)
ULOGE FIX MINIMUMS				
S-29	880-1 472 (500-1)		880-1¼ 472 (500-1¼)	880-1½ 472 (500-1½)
CIRCLING	1100-1 692 (700-1)		1100-2 692 (700-2)	1380-3 972 (1000-3)

REIL Rwy 29 **Ⓛ**
MIRL Rwy 11-29 **Ⓛ**

FAF to MAP 7.7 NM

Knots	60	90	120	150	180
Min:Sec	7:42	5:08	3:51	3:05	2:34