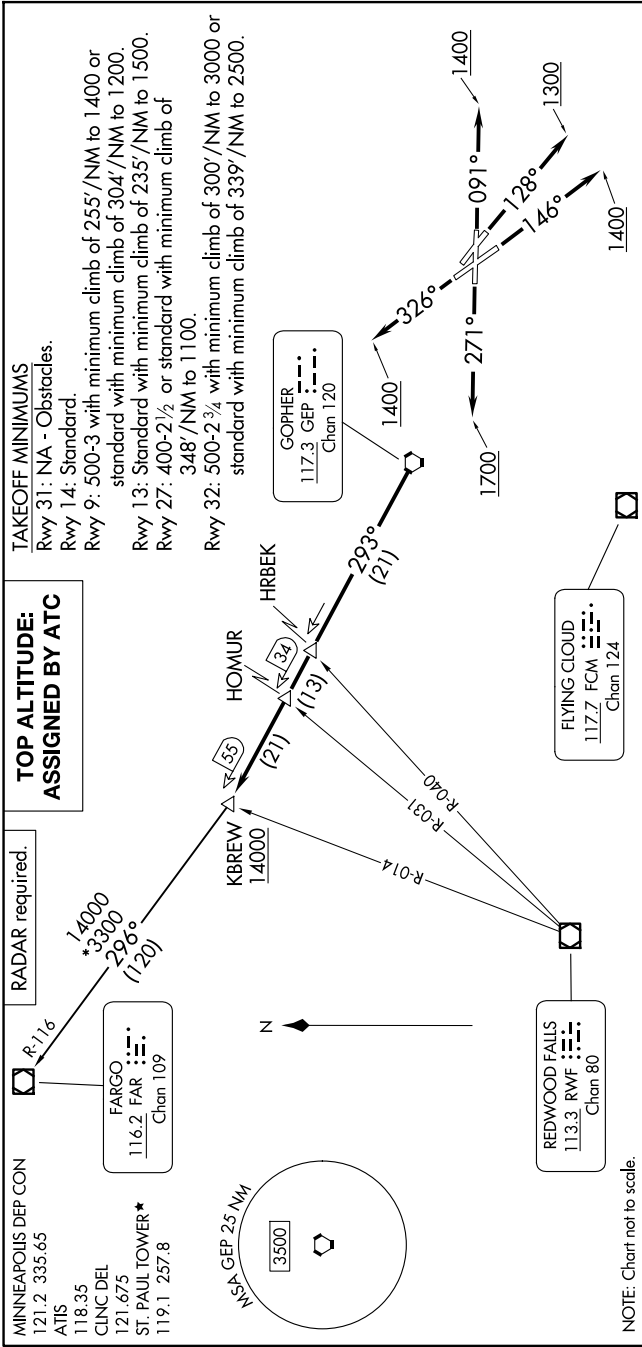


9200 200R 60 of 92002 N00R 11 1-ON



**TOP ALTITUDE:
ASSIGNED BY ATC**

TAKEOFF MINIMUMS
 Rwy 31: NA - Obstacles.
 Rwy 14: Standard.
 Rwy 9: 500-3 with minimum climb of 255'/NM to 1400 or standard with minimum climb of 304'/NM to 1200.
 Rwy 13: Standard with minimum climb of 235'/NM to 1500.
 Rwy 27: 400-2½ or standard with minimum climb of 348'/NM to 1100.
 Rwy 32: 500-2¾ with minimum climb of 300'/NM to 3000 or standard with minimum climb of 339'/NM to 2500.

MINNEAPOLIS DEP CON
 121.2 335.65
 ATIS 118.35
 CLNC DEL 121.675
 ST. PAUL TOWER* 119.1 257.8

RADAR required.
 R-116
 *14000
 *3300
 *2900
 (120)

FARGO
 116.2 FAR
 Chan 109

REDWOOD FALLS
 113.3 RW
 Chan 80

FLYING CLOUD
 117.7 FCM
 Chan 124

GOPHER
 117.3 GEP
 Chan 120

DEPARTURE ROUTE DESCRIPTION

TAKEOFF RUNWAY 9: Climb on heading 091° to 1400 for RADAR vectors to GEP VORTAC then on depicted route to KBREW, thence. . . .

TAKEOFF RUNWAY 13: Climb on heading 128° to 1300 for RADAR vectors to GEP VORTAC then on depicted route to KBREW, thence. . . .

TAKEOFF RUNWAY 14: Climb on heading 146° to 1400 for RADAR vectors to GEP VORTAC then on depicted route to KBREW, thence. . . .

TAKEOFF RUNWAY 27: Climb on heading 170° to 1700 for RADAR vectors to GEP VORTAC then on depicted route to KBREW, thence. . . .

TAKEOFF RUNWAY 32: Climb on heading 326° to 1400 for RADAR vectors to GEP VORTAC then on depicted route to KBREW, thence. . . .

. . . on transition. Maintain ATC assigned altitude. Expect filed altitude 10 minutes after departure.

FARGO TRANSITION (KBREW2.FAR): From over KBREW on FAR R-116 to FAR VOR/DME.