

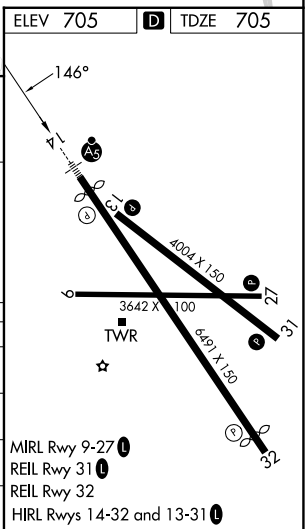
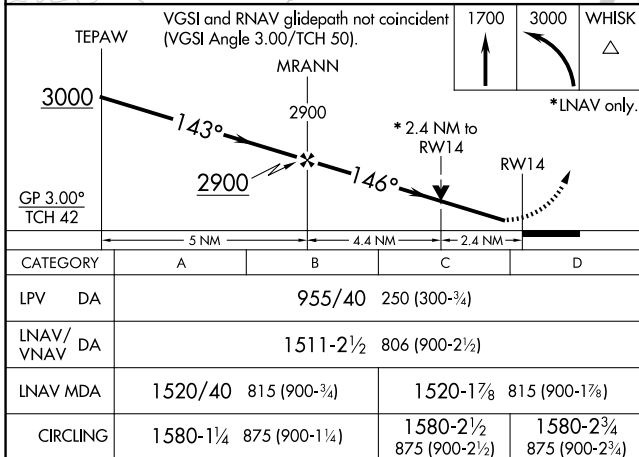
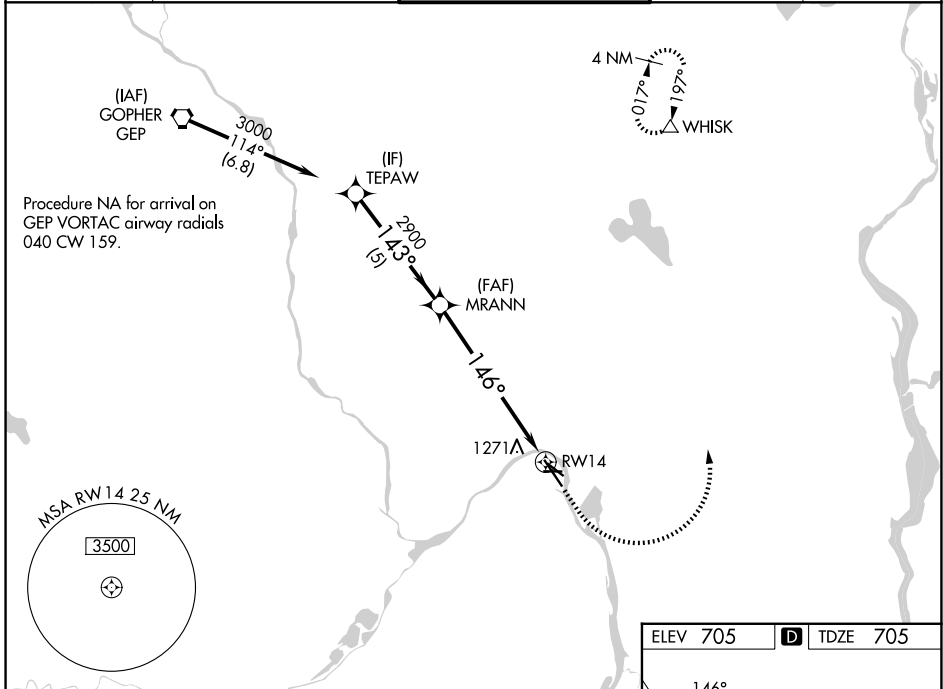
WAAS CH <b>62828</b> <b>W14A</b>	APP CRS <b>146°</b>	Rwy Ldg TDZE Apt Elev	<b>6148</b> <b>705</b> <b>705</b>
--	------------------------	-----------------------------	---

# RNAV (GPS) RWY 14

ST PAUL DOWNTOWN HOLMAN FLD (STP)

	For uncorrected Baro-VNAV systems, LNAV/VNAV NA below -21°C (-5°F) or above 54°C (130°F). Rwy 14 helicopter visibility reduction below 3/4 SM NA. DME/DME RNP-0.3 NA. For inop MALSR, increase LNAV Cats C and D to 2 1/2 SM.	MALSR 	MISSED APPROACH: (Do not exceed 250K until WHISK) Climb to 1700 then climbing left turn to 3000 direct WHISK and hold.

ATIS <b>118.35</b>	MINNEAPOLIS APP CON <b>121.2 335.65</b>	ST. PAUL TOWER ★ <b>119.1(CTAF) 257.8</b>	GND CON <b>121.675</b>	UNICOM <b>122.95</b>
-----------------------	--	--	---------------------------	-------------------------



NC-1, 11 JUN 2026 to 09 JUL 2026

NC-1, 11 JUN 2026 to 09 JUL 2026