

SCHEP ONE DEPARTURE
(SCHEP1, SCHEP) 08SEP22

ST PAUL, MINNESOTA
ST PAUL DOWNTOWN HOLMAN FLD (STP)

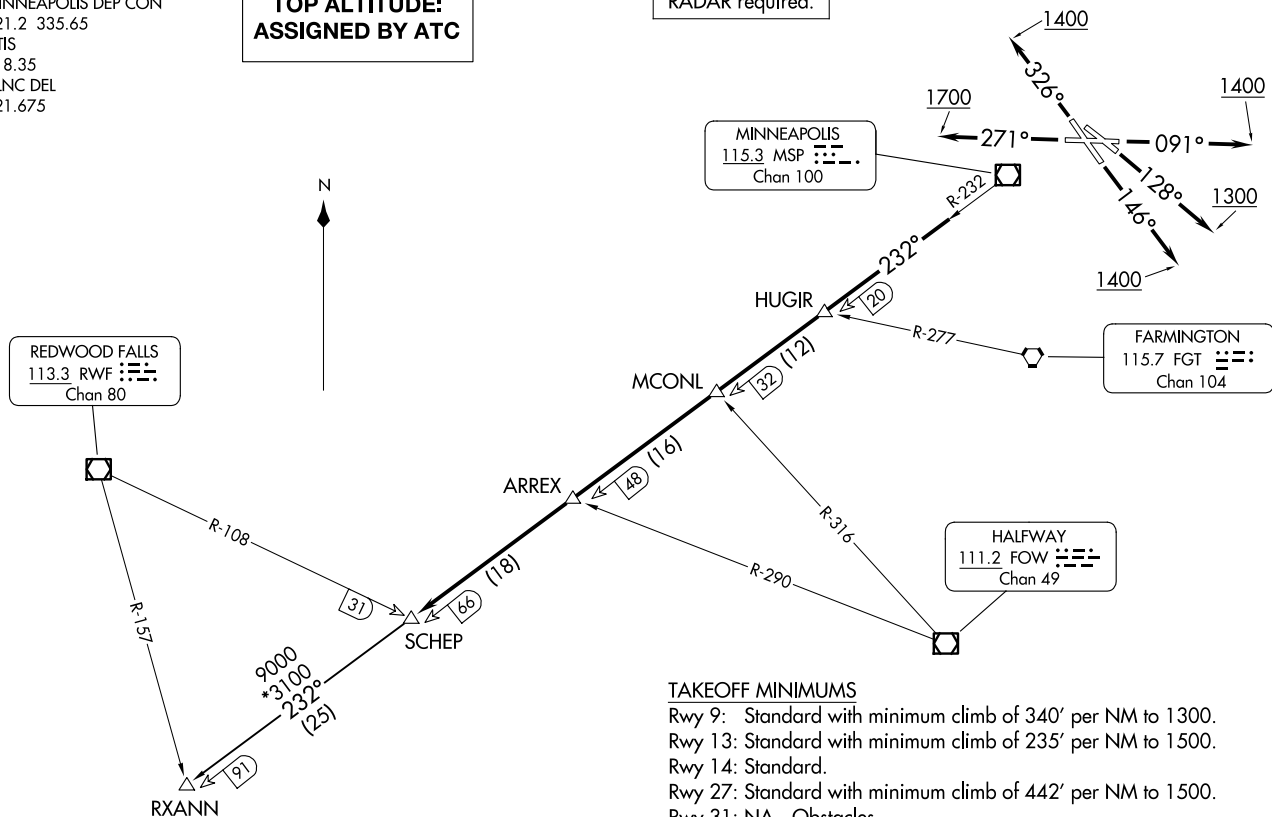
MINNEAPOLIS DEP CON
121.2 335.65
ATIS
118.35
CLNIC DEL
121.675

**TOP ALTITUDE:
ASSIGNED BY ATC**

RADAR required.

(SCHEP1, SCHEP) 23334
SCHEP ONE DEPARTURE

ST PAUL DOWNTOWN HOLMAN FLD (STP)
ST PAUL, MINNESOTA
AL-263 (FAA)



TAKEOFF MINIMUMS
 Rwy 9: Standard with minimum climb of 340' per NM to 1300.
 Rwy 13: Standard with minimum climb of 235' per NM to 1500.
 Rwy 14: Standard.
 Rwy 27: Standard with minimum climb of 442' per NM to 1500.
 Rwy 31: NA - Obstacles.
 Rwy 32: Standard with minimum climb of 340' per NM to 3000.

(CONTINUED ON FOLLOWING PAGE)

NOTE: Chart not to scale.



DEPARTURE ROUTE DESCRIPTION

TAKEOFF RUNWAY 9: Climb on heading 091° to 1400 for RADAR vectors to assigned fix on MSP R-232, then on depicted route to SCHEP, thence

TAKEOFF RUNWAY 13: Climb on heading 128° to 1300 for RADAR vectors to assigned fix on MSP R-232, then on depicted route to SCHEP, thence

TAKEOFF RUNWAY 14: Climb on heading 146° to 1400 for RADAR vectors to assigned fix on MSP R-232, then on depicted route to SCHEP, thence

TAKEOFF RUNWAY 27: Climb on heading 271° to 1700 for RADAR vectors to assigned fix on MSP R-232, then on depicted route to SCHEP, thence

TAKEOFF RUNWAY 32: Climb on heading 326° to 1400 for RADAR vectors to assigned fix on MSP R-232, then on depicted route to SCHEP, thence

. . . .on transition. Maintain ATC assigned altitude. Expect filed altitude 10 minutes after departure.

RXANN TRANSITION (SCHEP1.RXANN): From over SCHEP INT on MSP R-232 to RXANN INT.

NC-1, 11 JUN 2026 to 09 JUL 2026

NC-1, 11 JUN 2026 to 09 JUL 2026