

ZMBRO SEVEN DEPARTURE  
(ZMBRO7.ZMBRO) 17AUG17

(ZMBRO7.ZMBRO) 23334  
ZMBRO SEVEN DEPARTURE

AL-263 (FAA)

ST PAUL DOWNTOWN HOLMAN FLD (STP)  
ST PAUL, MINNESOTA

**TOP ALTITUDE:  
(JETS) 7000/  
(PROPS) 5000**

MINNEAPOLIS DEP CON  
121.2 284.7  
ATIS  
118.35  
CLNC DEL  
121.675  
ST. PAUL TOWER ★  
119.1 257.8

MINNEAPOLIS  
115.3 MSP  
Chan 100

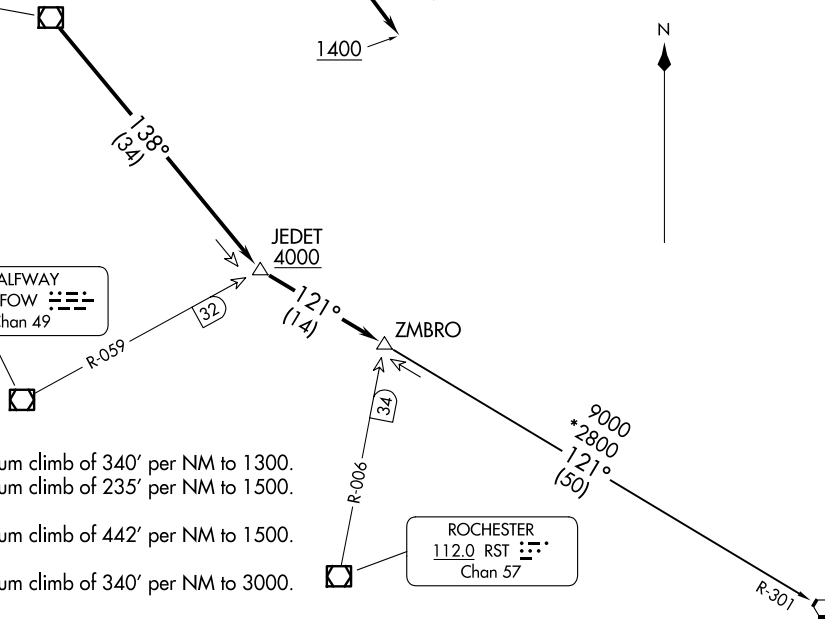
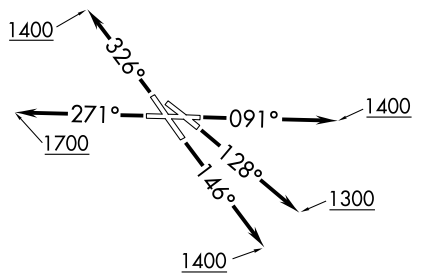
HALFWAY  
111.2 FOW  
Chan 49

ROCHESTER  
112.0 RST  
Chan 57

NODINE  
117.9 ODI  
Chan 126

**TAKEOFF MINIMUMS**

- Rwy 9: Standard with minimum climb of 340' per NM to 1300.
- Rwy 13: Standard with minimum climb of 235' per NM to 1500.
- Rwy 14: Standard.
- Rwy 27: Standard with minimum climb of 442' per NM to 1500.
- Rwy 31: NA - Obstacles.
- Rwy 32: Standard with minimum climb of 340' per NM to 3000.



(CONTINUED ON FOLLOWING PAGE)

NOTE: RADAR required.

NOTE: Chart not to scale.

ST PAUL, MINNESOTA  
ST PAUL DOWNTOWN HOLMAN FLD (STP)



DEPARTURE ROUTE DESCRIPTION

TAKEOFF RUNWAY 9: Climb heading 091° to 1400 for RADAR vectors to MSP VOR/DME then on MSP R-138 to cross JEDET INT/MSP 34 DME, at or above 4000; then on ODI R-301 to ZMBRO INT/ODI 50 DME, thence . . . .

TAKEOFF RUNWAY 13: Climb heading 128° to 1300 for RADAR vectors to MSP VOR/DME then on MSP R-138 to cross JEDET INT/MSP 34 DME, at or above 4000; then on ODI R-301 to ZMBRO INT/ODI 50 DME, thence . . . .

TAKEOFF RUNWAY 14: Climb heading 146° to 1400 for RADAR vectors to MSP VOR/DME then on MSP R-138 to cross JEDET INT/MSP 34 DME, at or above 4000; then on ODI R-301 to ZMBRO INT/ODI 50 DME, thence . . . .

TAKEOFF RUNWAY 27: Climb heading 271° to 1700 for RADAR vectors to MSP VOR/DME then on MSP R-138 to cross JEDET INT/MSP 34 DME, at or above 4000; then on ODI R-301 to ZMBRO INT/ODI 50 DME, thence . . . .

TAKEOFF RUNWAY 32: Climb heading 326° to 1400 for RADAR vectors to MSP VOR/DME then on MSP R-138 to cross JEDET INT/MSP 34 DME, at or above 4000; then on ODI R-301 to ZMBRO INT/ODI 50 DME, thence . . . .

. . . .on assigned transition or route. Expect clearance to filed altitude/flight level 10 (ten) minutes after departure.

NODINE TRANSITION (ZMBRO7.ODI): From over ZMBRO on ODI R-301 to ODI VORTAC.

NC-1, 11 JUN 2026 to 09 JUL 2026

NC-1, 11 JUN 2026 to 09 JUL 2026