

LOC/DME I-PJL 110.7 Chan 44	APP CRS 121°	Rwy Ldg TDZE 7620 841	Apt Elev 842
--	------------------------	---	------------------------

ILS RWY 12L (SA CAT I)

MINNEAPOLIS-ST PAUL INTL/WOLD-CHAMBERLAIN (MSP)

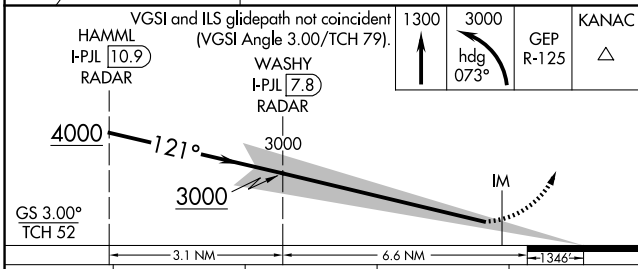
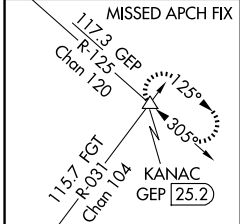
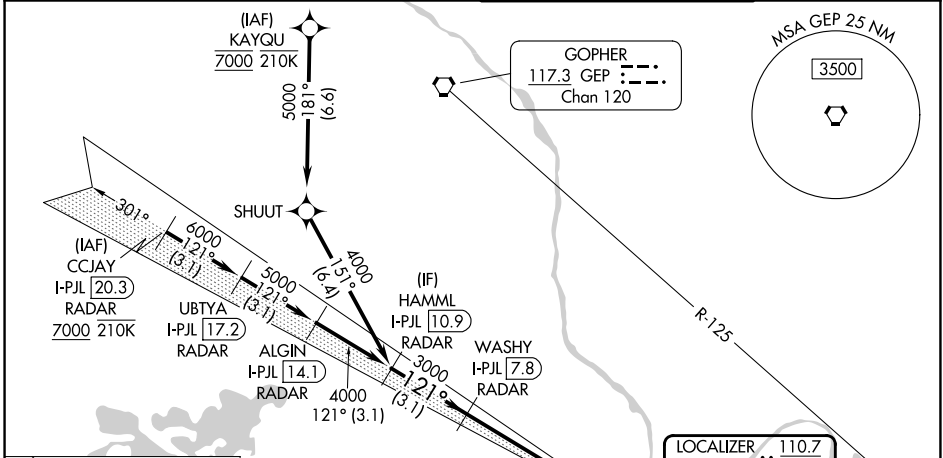
RNP APCH - GPS. From KAYQU.
DME or RADAR required.

Simultaneous approach authorized with Rwy 12R.
Requires specific OPSPEC, MSPEC, or LOA approval and use of HUD to DH.

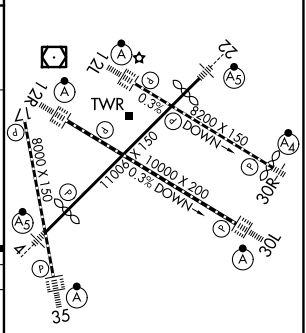
ALSF-2

MISSED APPROACH: Climb to 1300 then climbing left turn to 3000 on heading 073° and on GEP VORTAC R-125 to KANAC INT/GEF 25.2 DME and hold, continue climb-in-hold to 3000.

D-ATIS 135.35 239.275	MINNEAPOLIS APP CON 118.725 335.65 (35) 119.3 335.65 (4-22, 12L-30R, 17) 126.95 335.65 (12R-30L)	MINNEAPOLIS TOWER 123.675 273.55 (17-35) 123.95 273.55 (12L-30R) 126.7 273.55 (4-22, 12R-30L)	GND CON 121.8 348.6 (N) 121.9 348.6 (S) 127.925 348.6 (W)
---------------------------------	--	---	---



ELEV 842	TDZE 841
----------	----------



CATEGORY	A	B	C	D
S-ILS 12L	RA 147/14 150 DA 991			

SA CATEGORY I ILS - SPECIAL AIRCREW & AIRCRAFT CERTIFICATION REQUIRED

HIRL all rwys
REIL Rwy 17
TDZL/RCLS Rwys 12L, 12R, 30L, and 35

NC-1, 11 JUN 2026 to 09 JUL 2026

NC-1, 11 JUN 2026 to 09 JUL 2026