

LOC/DME I-HKZ 110.3 Chan 40	APP CRS 121°	Rwy Ldg TDZE 842 Apt Elev 842	10000
---	------------------------	---	--------------

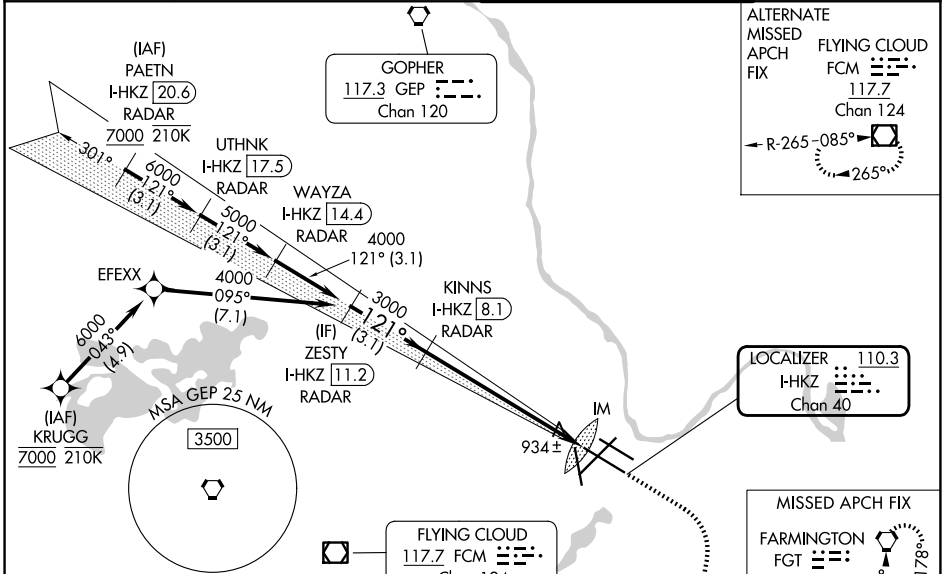
ILS RWY 12R (CAT II & III)

MINNEAPOLIS-ST PAUL INTL/WOLD-CHAMBERLAIN (MSP)

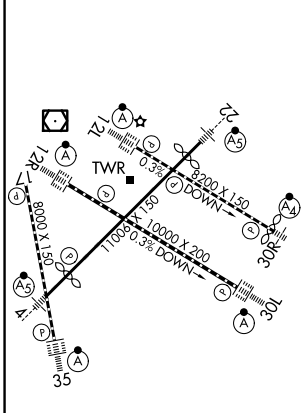
RNP APCH - GPS. From KRUGG.
DME or RADAR required.
Simultaneous approach authorized with Rwy 12L. CAT II: RVR 1000 authorized with specific OPSPEC, MSPEC, or LOA approval and use of autoland or HUD to touchdown.

ALSF-2
MISSED APPROACH: Climb to 3000 then climbing right turn to 3000 direct FGT VORTAC and hold.

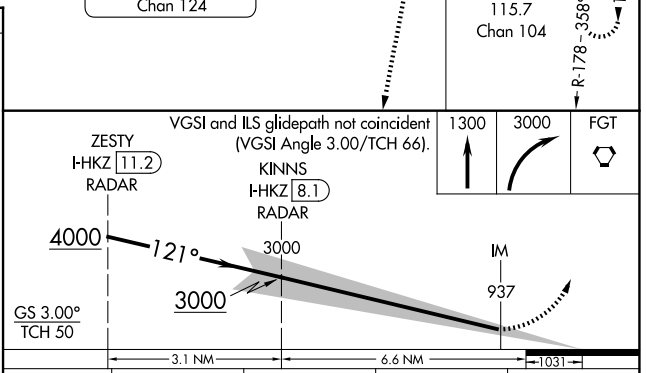
D-ATIS 135.35 239.275	MINNEAPOLIS APP CON 118.725 335.65 (35) 119.3 335.65 (4-22, 12L-30R, 17) 126.95 335.65 (12R-30L)	MINNEAPOLIS TOWER 123.675 273.55 (17-35) 123.95 273.55 (12L-30R) 126.7 273.55 (4-22, 12R-30L)	GND CON 121.8 348.6 (N) 121.9 348.6 (S) 127.925 348.6 (W)
---------------------------------	--	---	---



ELEV 842	D	TDZE 842
-----------------	----------	-----------------



HIRL all rwys
REIL Rwy 17
TDZL/RCLS Rwys 12L, 12R, 30L, and 35



CATEGORY	A	B	C	D
S-ILS 12R	CAT II RA 102/12 100 DA 942			
S-ILS 12R	CAT III RVR 06			

CATEGORY II & III ILS - SPECIAL AIRCREW & AIRCRAFT CERTIFICATION REQUIRED

NC-1, 11 JUN 2026 to 09 JUL 2026

NC-1, 11 JUN 2026 to 09 JUL 2026