

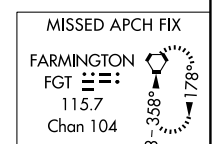
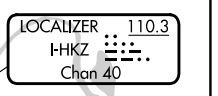
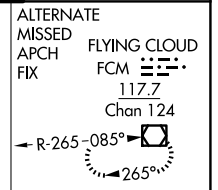
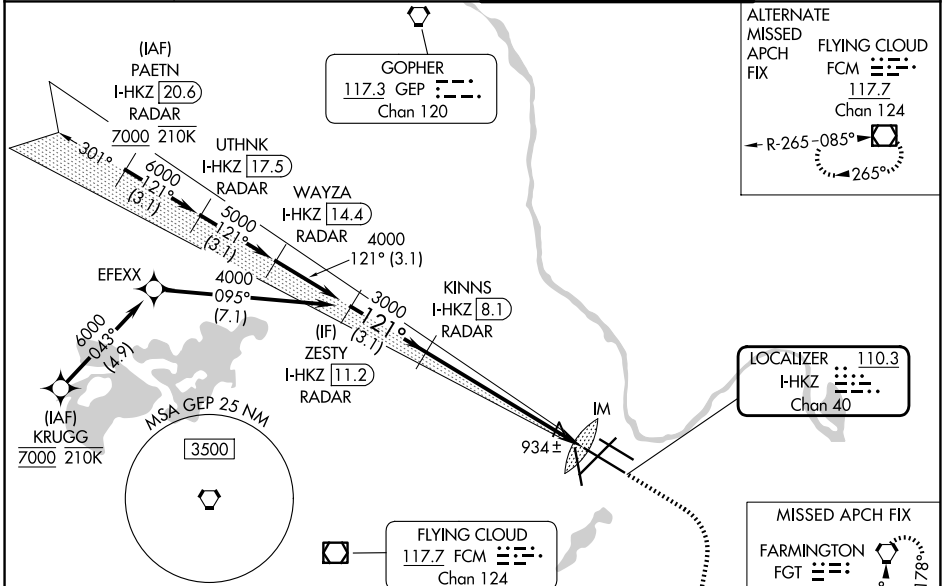
LOC/DME I-HKZ <b>110.3</b> Chan <b>40</b>	APP CRS <b>121°</b>	Rwy Ldg TDZE <b>842</b> Apt Elev <b>842</b>	<b>10000</b>
---	------------------------	---	--------------

# ILS RWY 12R (SA CAT I)

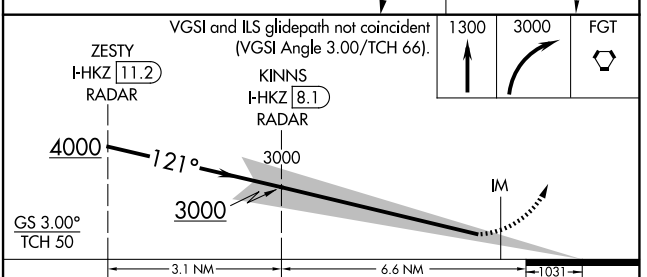
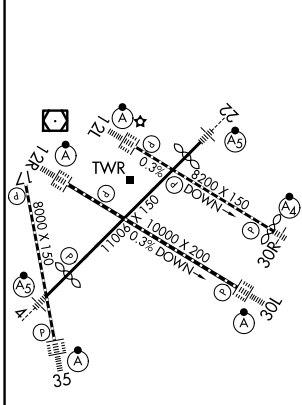
MINNEAPOLIS-ST PAUL INTL/WOLD-CHAMBERLAIN (MSP)

RNP APCH - GPS. From KRUGG.	ALSIF-2 	MISSED APPROACH: Climb to 1300 then climbing right turn to 3000 direct FGT VORTAC and hold.
DME or RADAR required.		
Simultaneous approach authorized with Rwy 12L. Requires specific OPSPEC, MSPEC, or LOA approval and use of HUD to DH.		

D-ATIS <b>135.35 239.275</b>	MINNEAPOLIS APP CON <b>118.725 335.65 (35)</b> <b>119.3 335.65 (4-22, 12L-30R, 17)</b> <b>126.95 335.65 (12R-30L)</b>	MINNEAPOLIS TOWER <b>123.675 273.55 (17-35)</b> <b>123.95 273.55 (12L-30R)</b> <b>126.7 273.55 (4-22, 12R-30L)</b>	GND CON <b>121.8 348.6 (N)</b> <b>121.9 348.6 (S)</b> <b>127.925 348.6 (W)</b>
---------------------------------	--	---	---



ELEV 842	<b>D</b>	TDZE 842
----------	----------	----------



CATEGORY	A	B	C	D
S-ILS 12R	RA 168/14		150 DA 992	

## SA CATEGORY I ILS - SPECIAL AIRCREW & AIRCRAFT CERTIFICATION REQUIRED

HIRL all rwys  
REIL Rwy 17  
TDZL/RCLS Rwys 12L, 12R, 30L, and 35

NC-1, 11 JUN 2026 to 09 JUL 2026

NC-1, 11 JUN 2026 to 09 JUL 2026