

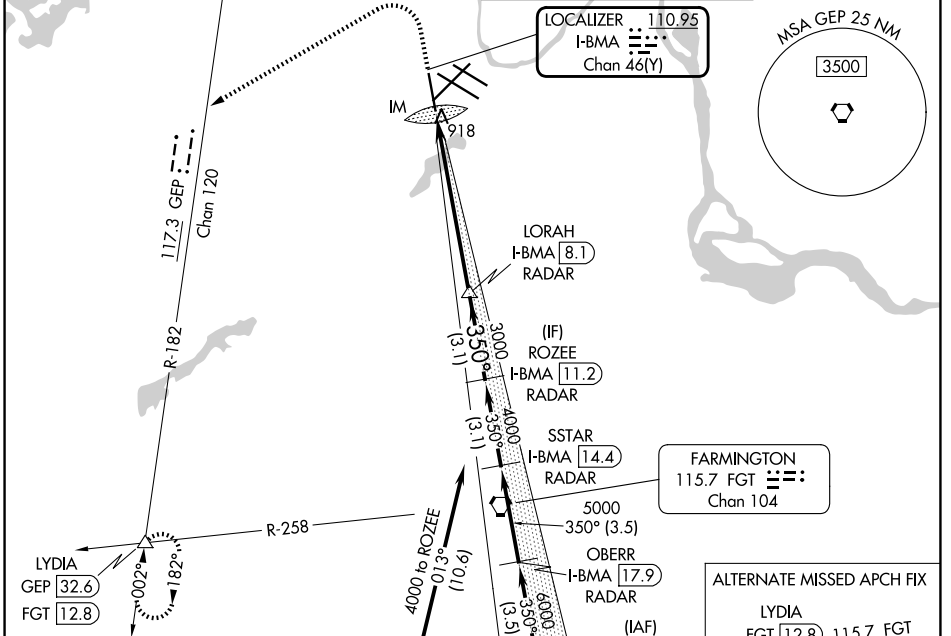
| | | | |
|---|------------------------|-----------------------------|---|
| LOC/DME I-BMA 110.95 Chan 46(Y) | APP CRS 350° | Rwy Ldg TDZE Apt Elev | 8000 834 842 |
|---|------------------------|-----------------------------|---|

ILS RWY 35 (SA CAT I)

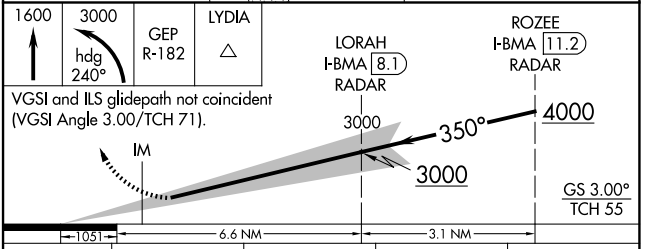
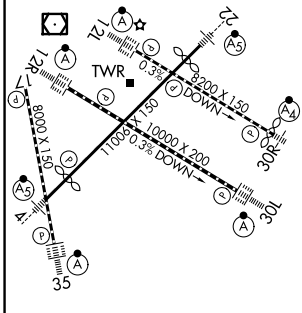
MINNEAPOLIS-ST PAUL INTL/WOLD-CHAMBERLAIN (MSP)

| | | |
|---|--------|--|
| RNP APCH - GPS. From NNEWWW. DME or RADAR required. | ALSF-2 | MISSED APPROACH: Climb to 1600 then climbing left turn to 3000 on heading 240° and on GEP VORTAC R-182 to LYDIA INT/GEF 32.6 DME and hold. |
| <p>Requires specific OPSPEC, MSPEC, or LOA approval and use of HUD to DH.</p> | | |

| | | | |
|---------------------------------|--|---|---|
| D-ATIS 135.35 239.275 | MINNEAPOLIS APP CON 118.725 335.65 (35) 119.3 335.65 (4-22, 12L-30R, 17) 126.95 335.65 (12R-30L) | MINNEAPOLIS TOWER 123.675 273.55 (17-35) 123.95 273.55 (12L-30R) 126.7 273.55 (4-22, 12R-30L) | GND CON 121.8 348.6 (N) 121.9 348.6 (S) 127.925 348.6 (W) |
|---------------------------------|--|---|---|



| | | |
|----------|----------|----------|
| ELEV 842 | D | TDZE 834 |
|----------|----------|----------|



| | | | | |
|----------|----------------------|---|---|---|
| CATEGORY | A | B | C | D |
| S-ILS 35 | RA 157/14 150 DA 984 | | | |

SA CATEGORY I ILS - SPECIAL AIRCREW & AIRCRAFT CERTIFICATION REQUIRED

HIRL all rwys
REIL Rwy 17
TDZL/RCLS Rwws 12L, 12R, 30L, and 35

NC-1, 11 JUN 2026 to 09 JUL 2026

NC-1, 11 JUN 2026 to 09 JUL 2026