

LOC/DME I-BMA 110.95 Chan 46(Y)	APP CRS 350°	Rwy ldg TDZE Apt Elev	8000 834 842
---	------------------------	-----------------------------	---

ILS V RWY 35 (CONVERGING)

MINNEAPOLIS-ST PAUL INTL/WOLD-CHAMBERLAIN (MSP)

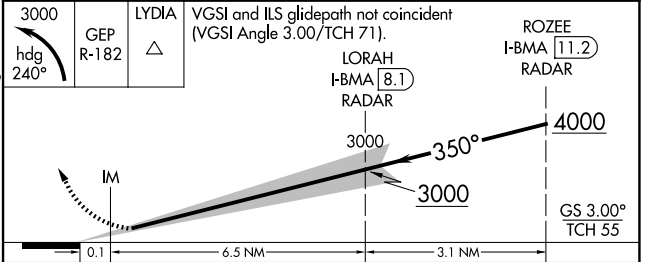
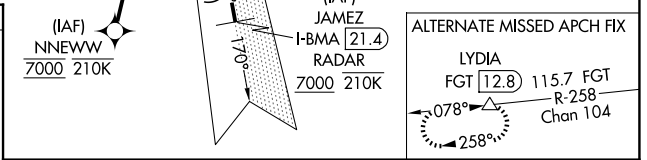
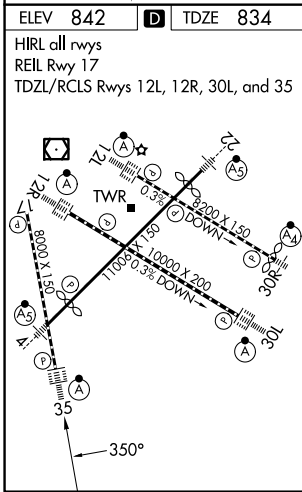
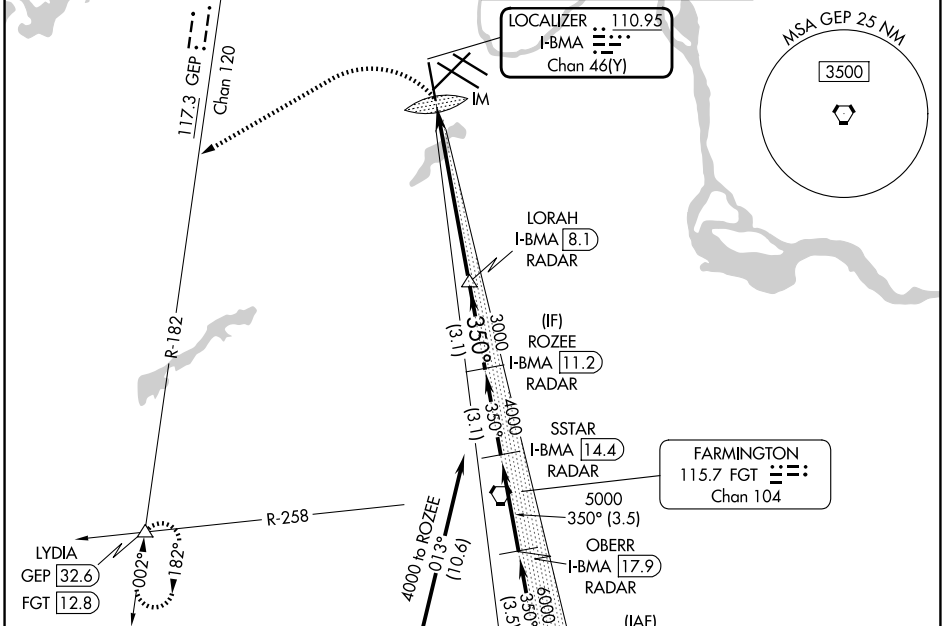
RNP APCH - GPS. From NNEWWW.
DME or RADAR required.

NA Inop table does not apply. No autoland on ILS V RWY 35 (CONVERGING). Simultaneous approach authorized.

ALSF-2

MISSED APPROACH: Climbing left turn to 3000 on heading 240° and on GEP VORTAC R-182 to LYDIA INT/GEF 32.6 DME and hold.

D-ATIS 135.35 239.275	MINNEAPOLIS APP CON 118.725 335.65 (35) 119.3 335.65 (4-22, 12L-30R, 17) 126.95 335.65 (12R-30L)	MINNEAPOLIS TOWER 123.675 273.55 (17-35) 123.95 273.55 (12L-30R) 126.7 273.55 (4-22, 12R-30L)	GND CON 121.8 348.6 (N) 121.9 348.6 (S) 127.925 348.6 (W)
---------------------------------	--	---	---



CATEGORY	A	B	C	D
S-ILS 35	1684-3 850 (900-3)			

NC-1, 11 JUN 2026 to 09 JUL 2026

NC-1, 11 JUN 2026 to 09 JUL 2026