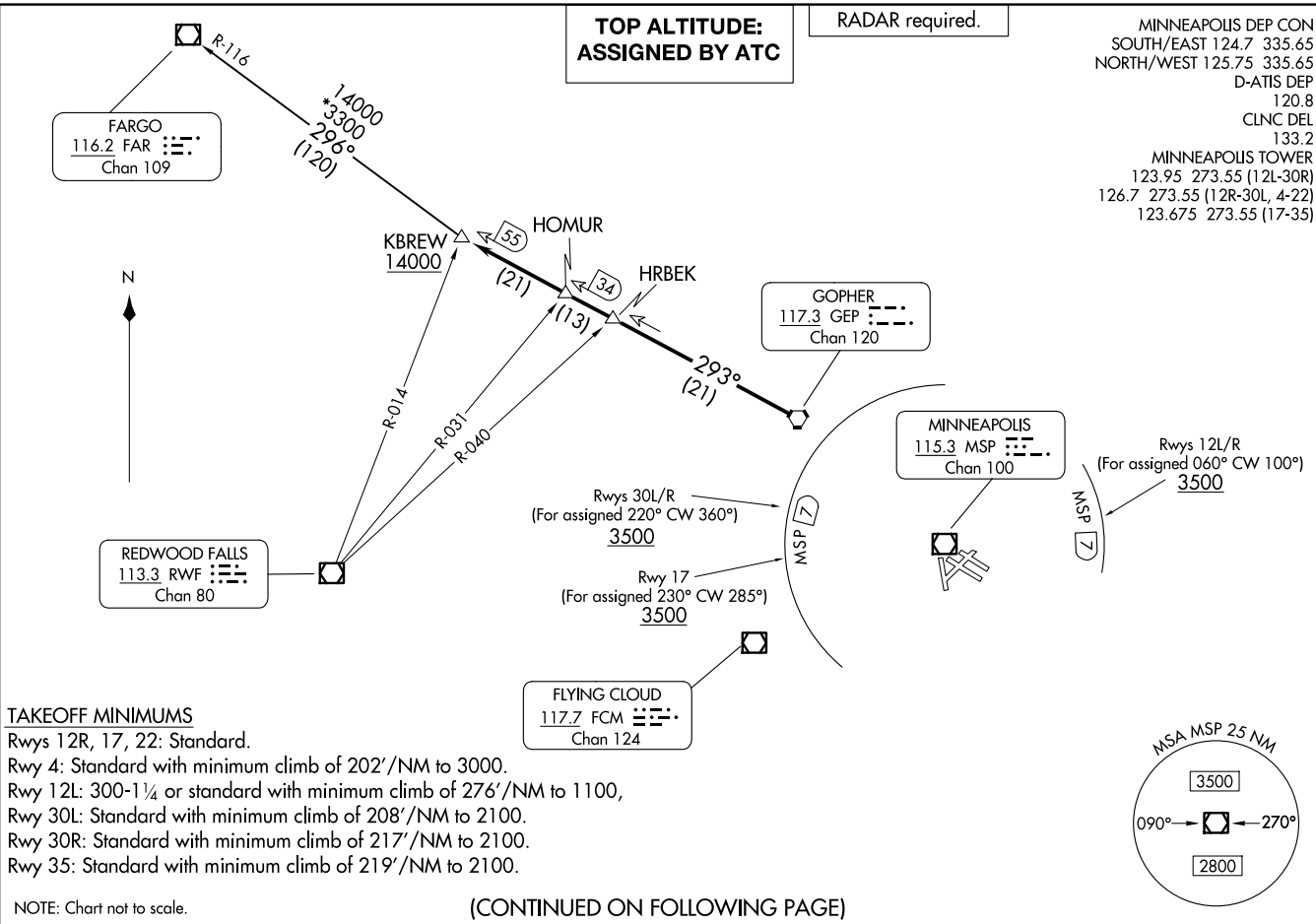


**KBREW TWO DEPARTURE**  
(KBREW2.KBREW) 16MM124

MINNEAPOLIS-ST PAUL INTL/WOLD-CHAMBERLAIN (MSP)  
MINNEAPOLIS, MINNESOTA



**TOP ALTITUDE:  
ASSIGNED BY ATC**

RADAR required.

MINNEAPOLIS DEP CON  
SOUTH/EAST 124.7 335.65  
NORTH/WEST 125.75 335.65  
D-ATIS DEP 120.8  
CLNC DEL 133.2  
MINNEAPOLIS TOWER  
123.95 273.55 (12L-30R)  
126.7 273.55 (12R-30L, 4-22)  
123.675 273.55 (17-35)

**(KBREW2.KBREW) 24137**  
**KBREW TWO DEPARTURE**

MINNEAPOLIS-ST PAUL INTL/WOLD-CHAMBERLAIN (MSP)  
AL-264 (FAA)  
MINNEAPOLIS, MINNESOTA

**TAKEOFF MINIMUMS**

- Rwys 12R, 17, 22: Standard.
- Rwy 4: Standard with minimum climb of 202'/NM to 3000.
- Rwy 12L: 300-1¼ or standard with minimum climb of 276'/NM to 1100,
- Rwy 30L: Standard with minimum climb of 208'/NM to 2100.
- Rwy 30R: Standard with minimum climb of 217'/NM to 2100.
- Rwy 35: Standard with minimum climb of 219'/NM to 2100.

NOTE: Chart not to scale.

(CONTINUED ON FOLLOWING PAGE)



DEPARTURE ROUTE DESCRIPTION

TAKEOFF ALL RUNWAYS: Climb on assigned heading for RADAR vectors to GEP VORTAC then on depicted route to KBREW, then on transition. Maintain ATC assigned altitude. Expect filed altitude 10 minutes after departure.

ALL AIRCRAFT: CLIMB GRADIENTS: If unable to accept climb rates, advise ATC prior to taxi.

RUNWAYS 12L/R: For assigned headings from 060° clockwise to 100°, cross MSP VOR/DME 7 DME arc at or above 3500, Rwy 12L: 540'/NM to 3500, Rwy 12R: 542'/NM to 3500.

RUNWAY 17: For assigned headings from 230° clockwise to 285°, cross MSP VOR/DME 7 DME arc at or above 3500, 512'/NM to 3500.

RUNWAYS 30L/R: For assigned headings from 220° clockwise to 360°, cross MSP VOR/DME 7 DME arc at or above 3500, 380'/NM to 3500.

FARGO TRANSITION (KBREW2.FAR): From over KBREW on FAR R-116 to FAR VOR/DME.

NC-1, 11 JUN 2026 to 09 JUL 2026

NC-1, 11 JUN 2026 to 09 JUL 2026