

LOC RWY 22

MINNEAPOLIS-ST PAUL INTL/WOLD-CHAMBERLAIN (MSP)

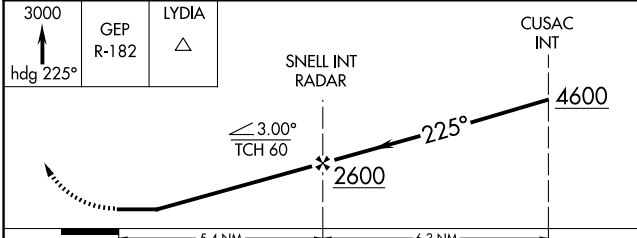
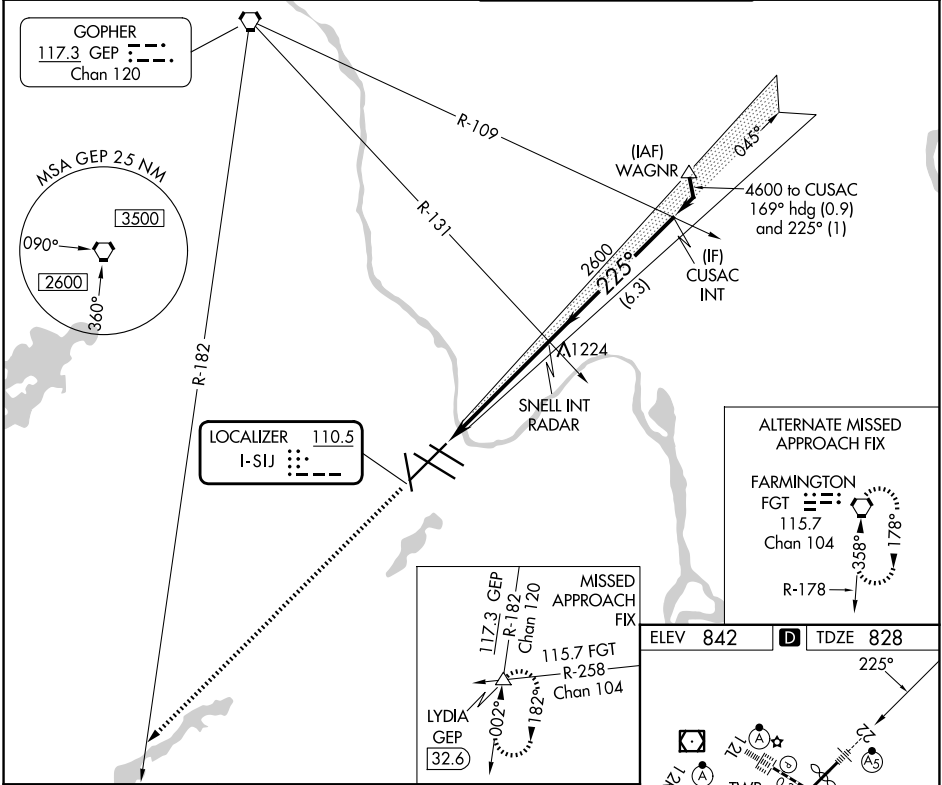
LOC I-SIJ 110.5	APP CRS 225°	Rwy Ldg 10006 TDZE 828 Apt Elev 842
---------------------------	------------------------	--

▼ Rwy 22 helicopter visibility reduction below RVR 4000 NA.
▲ For inop ALS, increase S-22 Cat A and B visibility to RVR 5500, and Cat E visibility to 1 ¼ SM.



MISSED APPROACH: Climb to 3000 on heading 225° and GEP VORTAC R-182 to LYDIA INT/GEP 32.6 DME and hold.

D-ATIS 135.35 239.275	MINNEAPOLIS APP CON 118.725 335.65 (35) 119.3 335.65 (1 2L-30R, 4-22, 17) 126.95 335.65 (1 2R-30L)	MINNEAPOLIS TOWER 123.675 273.55 (17-35) 123.95 273.55 (1 2L-30R) 126.7 273.55 (1 2R-30L, 4-22)	GND CON 121.8 348.6 (N) 121.9 348.6 (S) 127.925 348.6 (W)
---------------------------------	--	---	---



CATEGORY	A	B	C	D	E
S-22	1420/40	592 (600-¾)	1420-1¼	592 (600-1½)	
CIRCLING	1420-1	578 (600-1)	1460-1¾ 618 (700-1¾)	1620-2½ 778 (800-2½)	1800-3 958 (1000-3)

ELEV 842	TDZE 828
HIRL all rwys REL Rwy 17 TDZL/RCLS Rwys 12L, 12R, 30L, and 35	
FAF to MAP 5.4 NM	
Knots	60 90 120 150 180
Min:Sec	5:24 3:36 2:42 2:10 1:48

LOC RWY 22

NC-1, 11 JUN 2026 to 09 JUL 2026

NC-1, 11 JUN 2026 to 09 JUL 2026