

MEADOW LAKE FIVE DEPARTURE

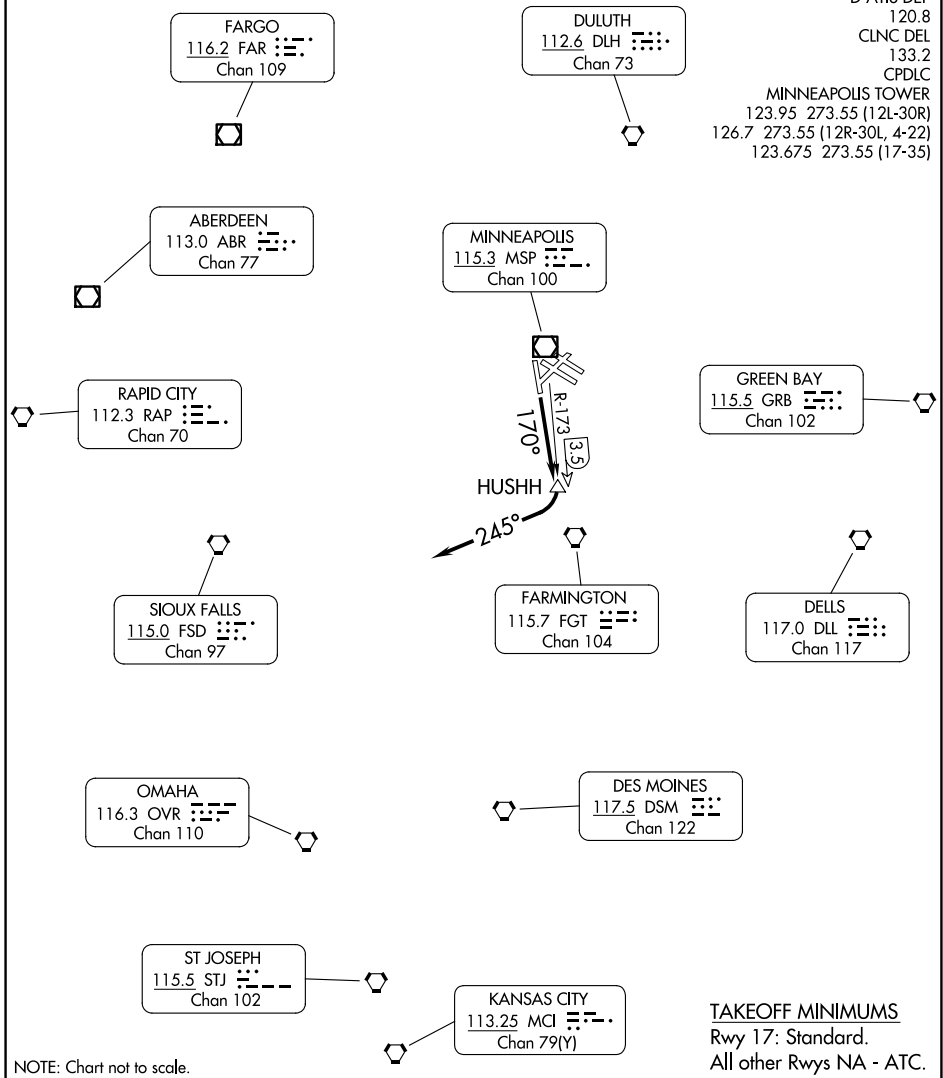
AL-264 (FAA)

MINNEAPOLIS, MINNESOTA

**TOP ALTITUDE:
ASSIGNED BY ATC**

RADAR and DME required.

MINNEAPOLIS DEP CON
 SOUTH/EAST 124.7 284.7
 NORTH/WEST 125.75 335.65
 D-ATIS DEP 120.8
 CLNC DEL 133.2
 CPDLC
 MINNEAPOLIS TOWER
 123.95 273.55 (12L-30R)
 126.7 273.55 (12R-30L, 4-22)
 123.675 273.55 (17-35)



NC-1, 11 JUN 2026 to 09 JUL 2026

NC-1, 11 JUN 2026 to 09 JUL 2026

NOTE: Chart not to scale.

TAKEOFF MINIMUMS
 Rwy 17: Standard.
 All other Rwy's NA - ATC.



DEPARTURE ROUTE DESCRIPTION

TAKEOFF RUNWAY 17: Climb on heading 170° to HUSHH/MSP VOR/DME 3.5 DME, then right turn heading 245° for vectors to assigned route. Maintain ATC assigned altitude. Expect filed altitude 10 minutes after departure.

MEADOW LAKE FIVE DEPARTURE