

RNAV (RNP) Y RWY 30L

MINNEAPOLIS-ST PAUL INTL/WOLD-CHAMBERLAIN (MSP)

APP CRS 301°	Rwy Ldg 10000
	TDZE 823
	Apt Elev 842

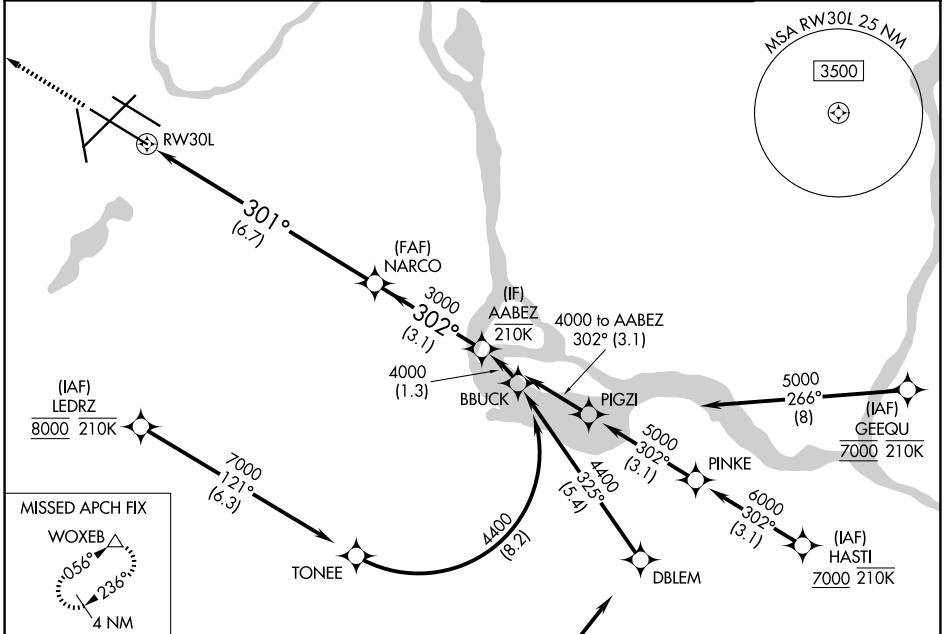
RNP AR APCH - GPS. Authorization required. From TONEE or BBUCK: RF.

▼ For uncompensated Baro-VNAV systems, procedure NA below -21°C or above 54°C. Simultaneous approach authorized.

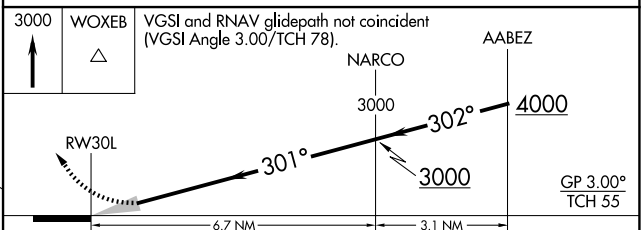
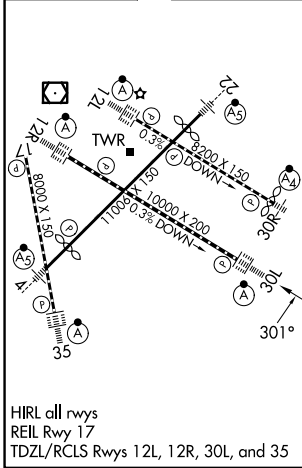
ALSF-2

MISSED APPROACH: Climb to 3000 direct WOXEB and hold.

D-ATIS 135.35 239.275	MINNEAPOLIS APP CON 118.725 335.65 (35) 119.3 335.65 (4-22, 12L-30R, 17) 126.95 335.65 (12R-30L)	MINNEAPOLIS TOWER 123.675 273.55 (17-35) 123.95 273.55 (12L-30R) 126.7 273.55 (4-22, 12R-30L)	GND CON 121.8 348.6 (N) 121.9 348.6 (S) 127.925 348.6 (W)
---------------------------------	--	---	---



ELEV **842** **D** TDZE **823**



CATEGORY	A	B	C	D
RNP 0.30 DA	1 150/26 327 (400-½)			

RNAV (RNP) Y RWY 30L

NC-1, 11 JUN 2026 to 09 JUL 2026

NC-1, 11 JUN 2026 to 09 JUL 2026