

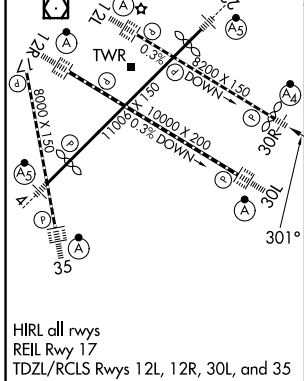
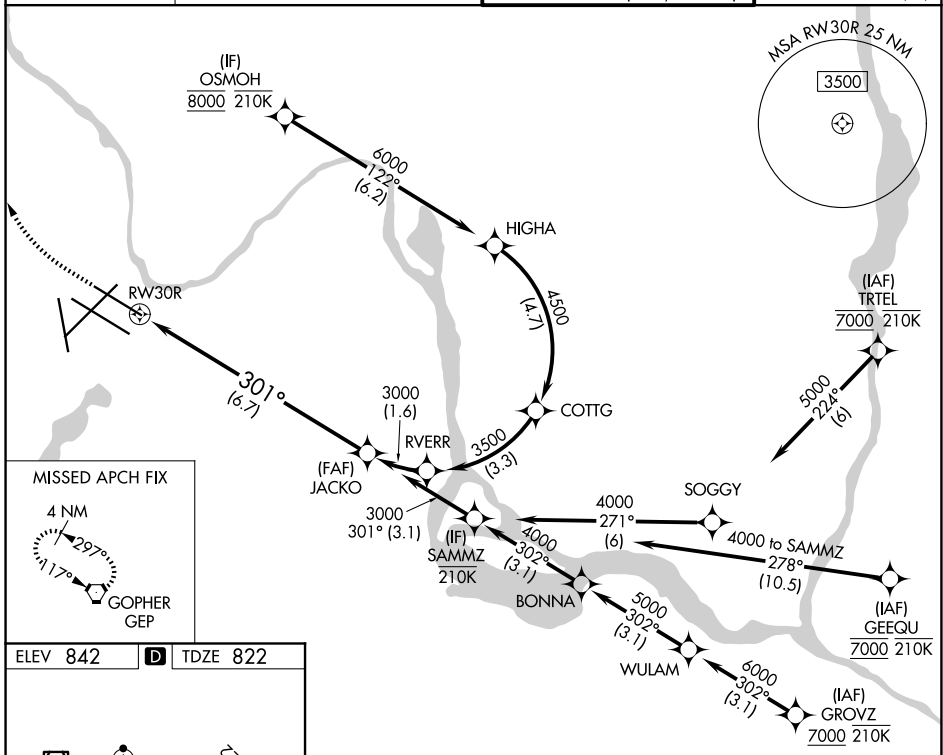
APP CRS 301°	Rwy Ldg TDZE Apt Elev	8000 822 842
------------------------	-----------------------------	---

RNAV (RNP) Y RWY 30R

MINNEAPOLIS-ST PAUL INTL/WOLD-CHAMBERLAIN (MSP)

RNP AR APCH - GPS. Authorization required. From HIGHA: RF.	MALSF	MISSED APPROACH: Climb to 1300 then climbing right turn to 3000 direct GEP VORTAC and hold.
▼ For uncompensated Baro-VNAV systems, procedure NA below -20°C or above 54°C. Inop table does not apply to RNP 0.15. Simultaneous approach authorized.		

D-ATIS 135.35 239.275	MINNEAPOLIS APP CON 118.725 335.65 (35) 119.3 335.65 (4-22, 12L-30R, 17) 126.95 335.65 (12R-30L)	MINNEAPOLIS TOWER 123.675 273.55 (17-35) 123.95 273.55 (12L-30R) 126.7 273.55 (4-22, 12R-30L)	GND CON 121.8 348.6 (N) 121.9 348.6 (S) 127.925 348.6 (W)
---------------------------------	--	---	---



1300	3000	GEP	VGSI and RNAV glidepath not coincident (VGSI Angle 3.00/TCH 71). See planview for multiple IF locations.	JACKO	3000
					GP 3.00° TCH 55

NC-1, 11 JUN 2026 to 09 JUL 2026

NC-1, 11 JUN 2026 to 09 JUL 2026