

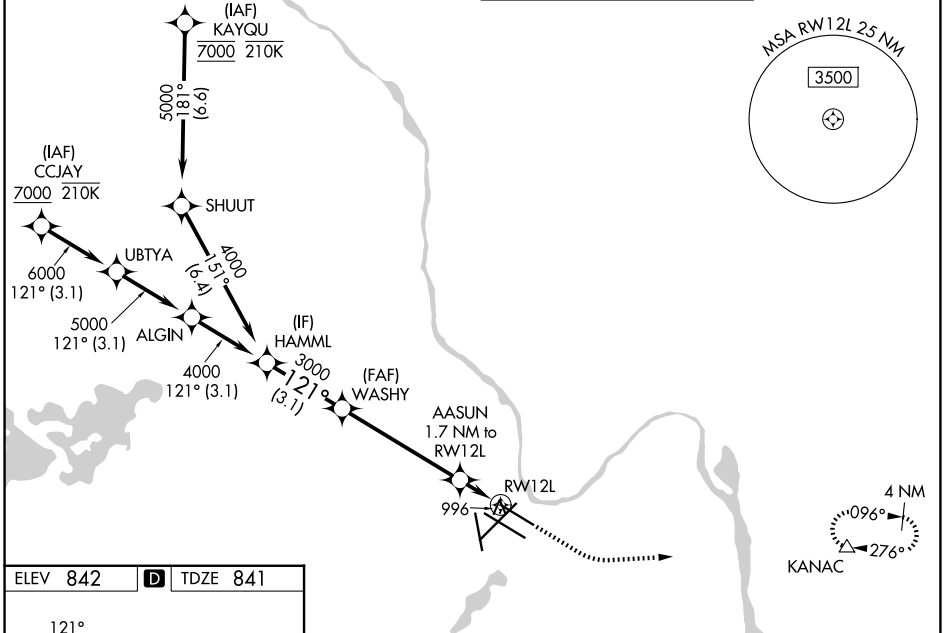
WAAS CH <b>45525</b> <b>W12B</b>	APP CRS <b>121°</b>	Rwy Ldg TDZE Apt Elev	<b>7620</b> <b>841</b> <b>842</b>
--	------------------------	-----------------------------	---

# RNAV (GPS) Z RWY 12L

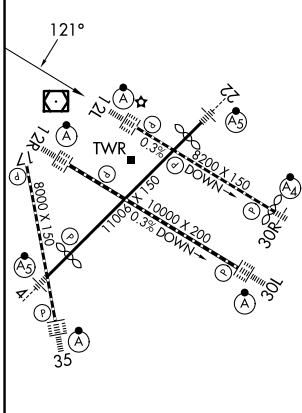
MINNEAPOLIS-ST PAUL INTL/WOLD-CHAMBERLAIN (MSP)

RNP APCH - GPS.	<p>Simultaneous approach authorized with Rwy 12R. LNAV procedure NA during simultaneous operations. For uncompensated Baro-VNAV systems, LNAV/VNAV NA below -20°C or above 54°C. Use of FD or AP required during simultaneous operations. For inop ALS, increase LNAV/VNAV visibility all Cats to RVR 4500 and LNAV Cats C/D visibility to RVR 6000.</p>	<p>ALSF-2</p>	<p>MISSED APPROACH: Climb to 1300, then climbing left turn to 3000 direct KANAC and hold.</p>
-----------------	--	---------------	---

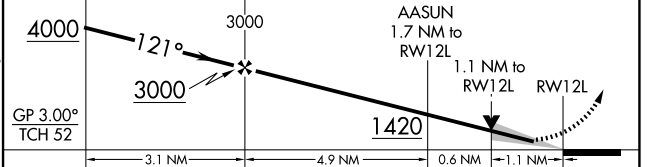
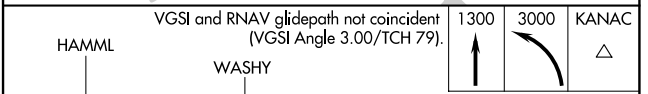
D-ATIS <b>135.35 239.275</b>	MINNEAPOLIS APP CON <b>118.725 335.65 (35)</b> <b>119.3 335.65 (4-22, 12L-30R, 17)</b> <b>126.95 335.65 (12R-30L)</b>	MINNEAPOLIS TOWER <b>123.675 273.55 (17-35)</b> <b>123.95 273.55 (12L-30R)</b> <b>126.7 273.55 (4-22, 12R-30L)</b>	GND CON <b>121.8 348.6 (N)</b> <b>121.9 348.6 (S)</b> <b>127.925 348.6 (W)</b>
---------------------------------	--	---	---



ELEV 842	<b>D</b>	TDZE 841
----------	----------	----------



HIRL all rwys  
REIL Rwy 17  
TDZL/RCLS Rwwys 12L, 12R, 30L, and 35



CATEGORY	A	B	C	D
LPV DA	1041/18 200 (200-½)			
LNAV/VNAV DA	1157/24 316 (400-½)			
LNAV MDA	1260/24	419 (500-½)	1260/40	419 (500-¾)
CIRCLING	1360-1 518 (600-1)		1460-1¾ 618 (700-1¾)	1620-2½ 778 (800-2½)

NC-1, 11 JUN 2026 to 09 JUL 2026

NC-1, 11 JUN 2026 to 09 JUL 2026