

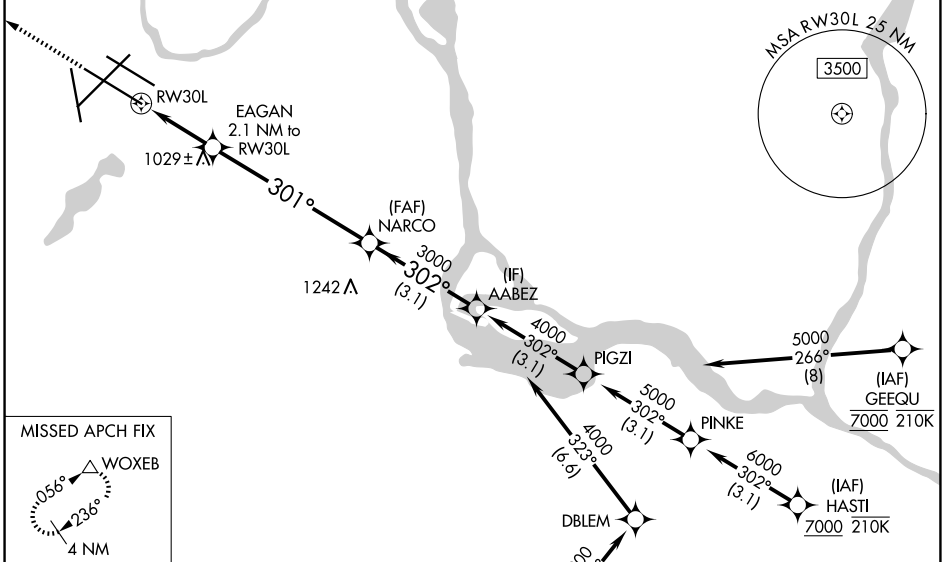
WAAS CH <b>56225</b> <b>W30A</b>	APP CRS <b>301°</b>	Rwy Ldg <b>10000</b> TDZE <b>823</b> Apt Elev <b>842</b>
--	------------------------	--

# RNAV (GPS) Z RWY 30L

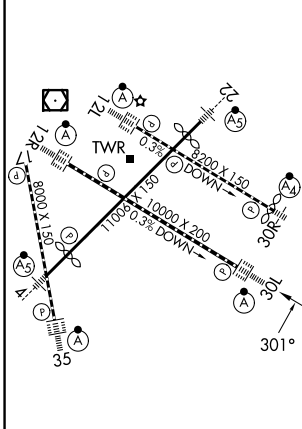
MINNEAPOLIS-ST PAUL INTL/WOLD-CHAMBERLAIN (MSP)

RNP APCH - GPS.		ALSF-2	MISSED APPROACH: Climb to 3000 direct WOXEB and hold.
⚠ For uncompensated Baro-VNAV systems, LNAV/VNAV NA below -21°C or above 54°C. Use of FD or AP required during simultaneous operations. LNAV procedure NA during simultaneous operations. Simultaneous approach authorized. For inop ALS, increase LNAV/VNAV visibility all Cats to RVR 4500.			

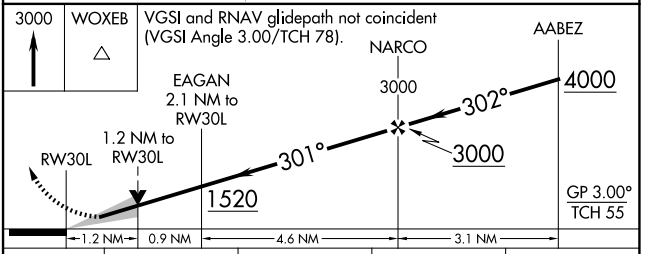
D-ATIS <b>135.35 239.275</b>	MINNEAPOLIS APP CON <b>118.725 335.65 (35)</b> <b>119.3 335.65 (4-22, 12L-30R, 17)</b> <b>126.95 335.65 (12R-30L)</b>	MINNEAPOLIS TOWER <b>123.675 273.55 (17-35)</b> <b>123.95 273.55 (12L-30R)</b> <b>126.7 273.55 (4-22, 12R-30L)</b>	GND CON <b>121.8 348.6 (N)</b> <b>121.9 348.6 (S)</b> <b>127.925 348.6 (W)</b>
---------------------------------	--	---	---



ELEV 842	<b>D</b>	TDZE 823
----------	----------	----------



HIRL all rwy's  
REIL Rwy 17  
TDZL/RCLS Rwy's 12L, 12R, 30L, and 35



CATEGORY	A	B	C	D
LPV DA		1023/18	200 (200-½)	
LNAV/VNAV DA		1130/24	307 (300-½)	
LNAV MDA	1280/24	457 (500-½)	1280/45	457 (500-¾)
CIRCLING	1360-1	518 (600-1)	1460-1¾ 618 (700-1¾)	1620-2½ 778 (800-2½)

NC-1, 11 JUN 2026 to 09 JUL 2026

NC-1, 11 JUN 2026 to 09 JUL 2026