

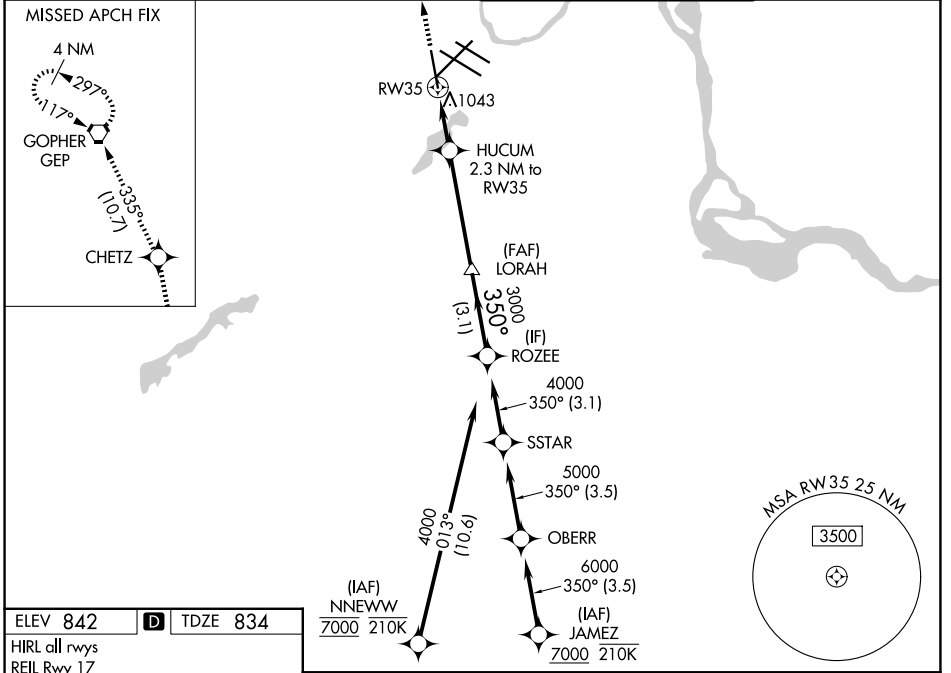
WAAS CH 90128 W35A	APP CRS 350°	Rwy Ldg TDZE 834 Apt Elev 842
--	------------------------	---

RNAV (GPS) Z RWY 35

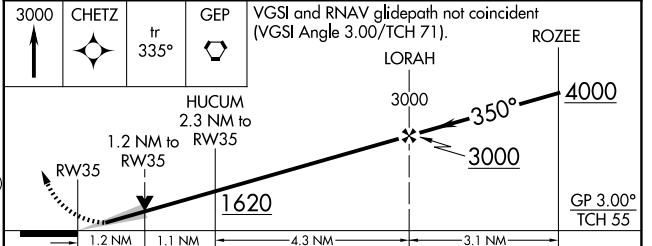
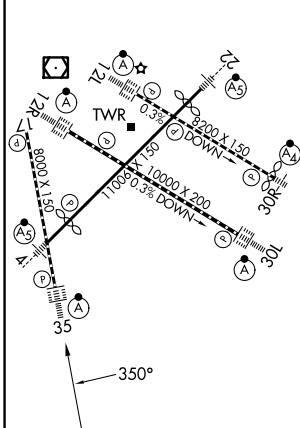
MINNEAPOLIS-ST PAUL INTL/WOLD-CHAMBERLAIN (MSP)

RNP APCH - GPS.	ALSF-2	MISSED APPROACH: Climb to 3000 direct CHETZ and on track 335° to GEP VORTAC and hold.
<p>▼ For uncompensated Baro-VNAV systems, LNAV/VNAV NA below -19°C or above 54°C. For inop ALS, increase LNAV/VNAV all Cats visibility to RVR 5500 and LNAV Cats C and D visibility to 1½ SM.</p> <p>▲</p>		

D-ATIS 135.35 239.275	MINNEAPOLIS APP CON 118.725 335.65 (35) 119.3 335.65 (4-22, 12L-30R, 17) 126.95 335.65 (12R-30L)	MINNEAPOLIS TOWER 123.675 273.55 (17-35) 123.95 273.55 (12L-30R) 126.7 273.55 (4-22, 12R-30L)	GND CON 121.8 348.6 (N) 121.9 348.6 (S) 127.925 348.6 (W)
---------------------------------	--	---	---



ELEV 842	D	TDZE 834
HIRL all rwy's		
REIL Rwy 17		
TDZL/RCLS Rwy's 12L, 12R, 30L, and 35		



CATEGORY	A	B	C	D
LPV DA		1034/18	200 (200-½)	
LNAV/VNAV DA		1204/35	370 (400-⅝)	
LNAV MDA	1300/24	466 (500-½)	1300/50	466 (500-1)
CIRCLING	1360-1	518 (600-1)	1460-1¾ 618 (700-1¾)	1620-2½ 778 (800-2½)

NC-1, 11 JUN 2026 to 09 JUL 2026

NC-1, 11 JUN 2026 to 09 JUL 2026