

# SMERF SEVEN DEPARTURE (RNAV)

AL-264 (FAA)

MINNEAPOLIS, MINNESOTA

D-ATIS DEP  
120.8  
CLNC DEL  
133.2  
CPDLC  
MINNEAPOLIS TOWER  
123.95 273.55 (12L-30R)  
126.7 273.55 (12R-30L, 4-22)  
123.675 273.55 (17-35)  
MINNEAPOLIS DEP CON  
SOUTH/EAST 124.7 335.65  
NORTH/WEST 125.75 335.65

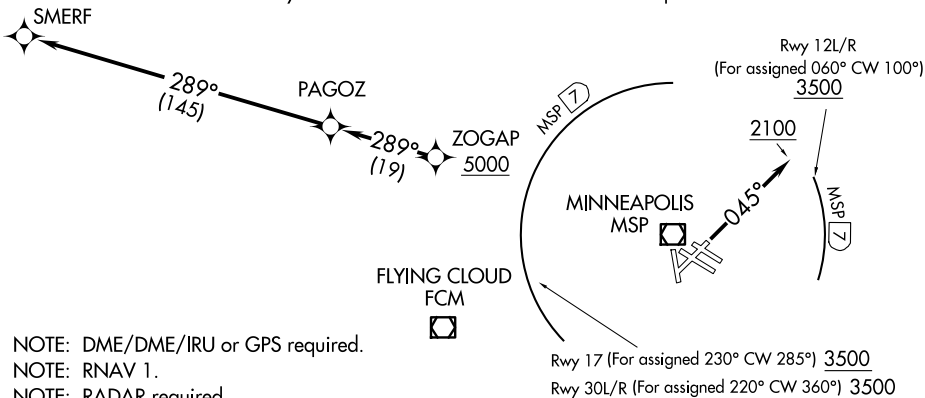
**TOP ALTITUDE:**  
**(JETS) 7000/**  
**(PROPS) 5000**

### TAKEOFF MINIMUMS

Rwys 4, 12R, 17, 22, 30L/R: Standard.

Rwy 12L: 300-1½ or standard with minimum climb of 207' per NM to 1100, or alternatively, with standard takeoff minimums and a normal 200' per NM climb gradient, takeoff must occur no later than 1300' prior to DER.

Rwy 35: Standard with minimum climb of 219' per NM to 2100.



NOTE: DME/DME/IRU or GPS required.

NOTE: RNAV 1.

NOTE: RADAR required.

NOTE: Chart not to scale.

## DEPARTURE ROUTE DESCRIPTION

**TAKEOFF RUNWAY 4:** Climb heading 045° to 2100. Thence . . . .

**TAKEOFF RUNWAYS 12L/R:** For assigned headings from 060° clockwise to 100°, cross MSP VOR/DME 7 DME Arc at or above 3500, maintain assigned altitude. If unable to comply, advise ATC as soon as possible prior to departure. Thence . . . .

**TAKEOFF RUNWAY 17:** For assigned headings from 230° clockwise to 285°, cross MSP VOR/DME 7 DME Arc at or above 3500, maintain assigned altitude. If unable to comply, advise ATC as soon as possible prior to departure. Thence . . . .

**TAKEOFF RUNWAYS 22, 35:** Climb on assigned heading for RADAR vectors. Thence . . . .

**TAKEOFF RUNWAYS 30L/R:** For assigned headings from 220° clockwise to 360°, cross MSP VOR/DME 7 DME Arc at or above 3500, maintain assigned altitude. If unable to comply, advise ATC as soon as possible prior to departure. Thence . . . .

. . . . expect RADAR vectors to cross ZOGAP at or above 5000, then on track 289° to PAGOZ and on track 289° to SMERF, turbojet aircraft maintain 7000 or lower assigned altitude, all other aircraft maintain 5000 or lower assigned altitude. Expect filed altitude/flight level ten minutes after departure.

# SMERF SEVEN DEPARTURE (RNAV)

MINNEAPOLIS, MINNESOTA