

(DIDLY5.DIDLY) 23278

DIDLY FIVE DEPARTURE

AL-266 (FAA)

MISSOULA MONTANA (MSO)

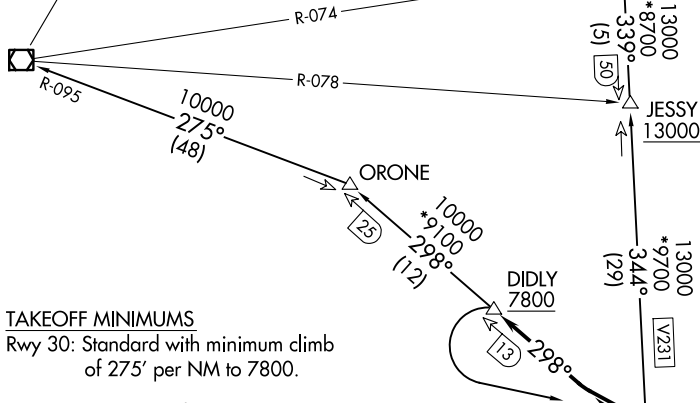
MISSOULA, MONTANA

**TOP ALTITUDE:
14000**

KALISPELL
113.2 FCA
Chan 79

SPOKANE DEP CON *
124.9 298.95
SALT LAKE CITY CENTER
127.075 244.875
ATIS
126.65
GND CON
121.9
MISSOULA TOWER *
118.4 377.175

MULLAN PASS
117.8 MLP
Chan 125



TAKEOFF MINIMUMS

Rwy 30: Standard with minimum climb of 275' per NM to 7800.

NOTE: DME required.

NOTE: Chart not to scale.

DEPARTURE ROUTE DESCRIPTION

TAKEOFF RUNWAY 30: Climb on MSO R-298 to cross DIDLY at or above 7800, thence on assigned transition or route.

KALISPELL TRANSITION (DIDLY5.FCA): From over DIDLY, left turn on MSO R-298 to MSO VOR/DME, then on MSO R-344 to JESSY, then on MSO R-344 and FCA R-159 to FCA VOR/DME.

MISSOULA TRANSITION (DIDLY5.MSO): From over DIDLY, left turn on MSO R-298 to MSO VOR/DME.

MULLAN PASS TRANSITION (DIDLY5.MLP): From over DIDLY on MSO R-298 to ORONE, then on MLP R-095 to MLP VOR/DME.

SALMON TRANSITION (DIDLY5.LKT): From over DIDLY left turn on MSO R-298 to MSO VOR/DME, then on MSO R-167 and LKT R-347 to LKT VOR/DME.

DIDLY FIVE DEPARTURE

(DIDLY5.DIDLY) 24MAY18

MISSOULA, MONTANA
MISSOULA MONTANA (MSO)

NW-1, 11 JUN 2026 to 09 JUL 2026