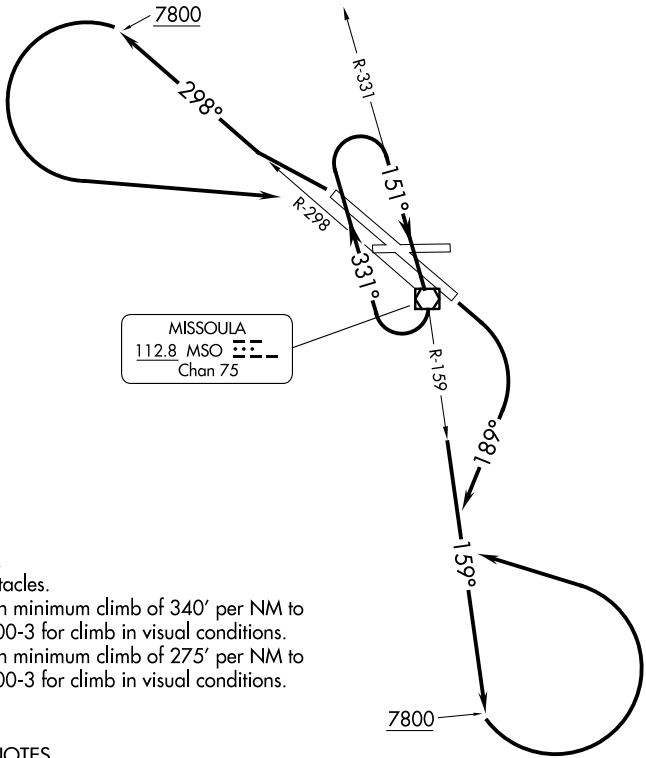


SPOKANE DEP CON ★
124.9 298.95
SALT LAKE CITY CENTER
127.075 244.875
ATIS
126.65
GND CON
121.9
MISSOULA TOWER ★
118.4 377.175



TAKEOFF MINIMUMS

- Rwys 8, 26: NA- Obstacles.
- Rwy 12: Standard with minimum climb of 340' per NM to 7800, or 2700-3 for climb in visual conditions.
- Rwy 30: Standard with minimum climb of 275' per NM to 7800, or 2700-3 for climb in visual conditions.

TAKEOFF OBSTACLE NOTES

Rwy 12: Fence beginning 22' from DER, 487' right of centerline, up to 9' AGL/3215' MSL.

NOTE: Chart not to scale.

DEPARTURE ROUTE DESCRIPTION

TAKEOFF RUNWAY 12: Climbing right turn heading 189° to intercept MSO R-159, southeast bound to 7800, thence. . . . or, obtain ATC approval for VCOA when requesting IFR clearance. Climb in visual conditions to cross MSO VOR/DME southeast bound at or above 5800, continue climb to 7800 on MSO VOR/DME R-159, thence. . . .

TAKEOFF RUNWAY 30: Climb on MSO R-298 to 7800, then climbing left turn on MSO R-298 to MSO VOR/DME, climb in MSO VOR/DME holding pattern to MEA/MCA for route of flight or, obtain ATC approval for VCOA when requesting IFR clearance. Climb in visual conditions to cross MSO VOR/DME southeast bound at or above 5800, continue climb to 7800 on MSO VOR/DME R-159, thence. . . .

. . . climbing left turn on MSO VOR/DME R-159 to MSO VOR/DME, climb in MSO VOR/DME holding pattern to MEA/MCA for route of flight.

NW-1, 11 JUN 2026 to 09 JUL 2026

NW-1, 11 JUN 2026 to 09 JUL 2026