

MZULA FIVE DEPARTURE

AL-266 (FAA)

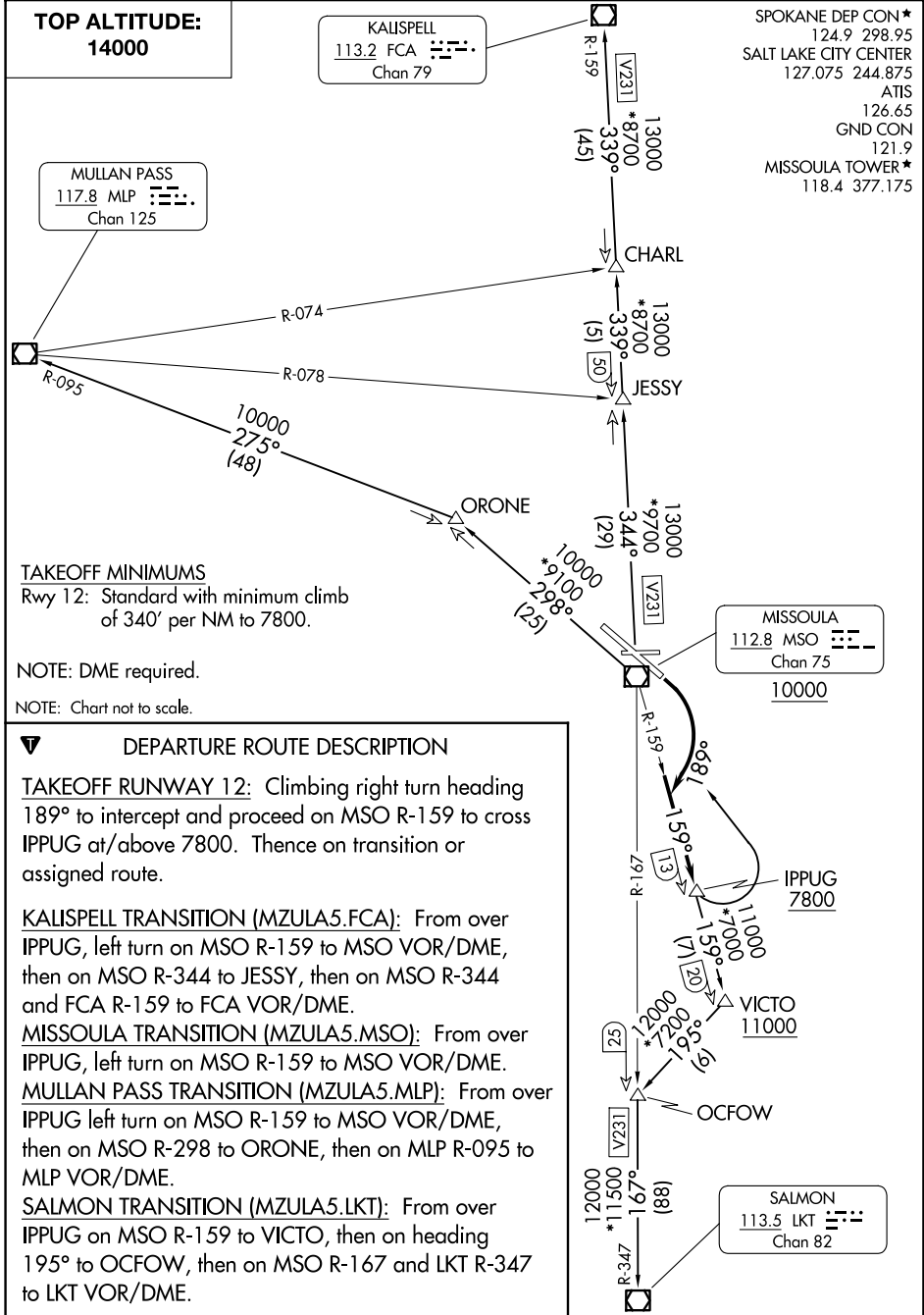
MISSOULA MONTANA (MSO)
MISSOULA, MONTANA

SPOKANE DEP CON *
124.9 298.95
SALT LAKE CITY CENTER
127.075 244.875
ATIS
126.65
GND CON
121.9
MISSOULA TOWER *
118.4 377.175

TOP ALTITUDE:
14000

KALISPELL
113.2 FCA
Chan 79

MULLAN PASS
117.8 MLP
Chan 125



TAKEOFF MINIMUMS
Rwy 12: Standard with minimum climb
of 340' per NM to 7800.

NOTE: DME required.

NOTE: Chart not to scale.

DEPARTURE ROUTE DESCRIPTION

TAKEOFF RUNWAY 12: Climbing right turn heading 189° to intercept and proceed on MSO R-159 to cross IPPUG at/above 7800. Thence on transition or assigned route.

KALISPELL TRANSITION (MZULA5.FCA): From over IPPUG, left turn on MSO R-159 to MSO VOR/DME, then on MSO R-344 to JESSY, then on MSO R-344 and FCA R-159 to FCA VOR/DME.

MISSOULA TRANSITION (MZULA5.MSO): From over IPPUG, left turn on MSO R-159 to MSO VOR/DME.

MULLAN PASS TRANSITION (MZULA5.MLP): From over IPPUG left turn on MSO R-159 to MSO VOR/DME, then on MSO R-298 to ORONE, then on MLP R-095 to MLP VOR/DME.

SALMON TRANSITION (MZULA5.LKT): From over IPPUG on MSO R-159 to VICTO, then on heading 195° to OCFOW, then on MSO R-167 and LKT R-347 to LKT VOR/DME.

NW-1, 11 JUN 2026 to 09 JUL 2026

NW-1, 11 JUN 2026 to 09 JUL 2026

MZULA FIVE DEPARTURE

(MZULA5.IPPUG) 24MAY18

MISSOULA, MONTANA
MISSOULA MONTANA (MSO)