

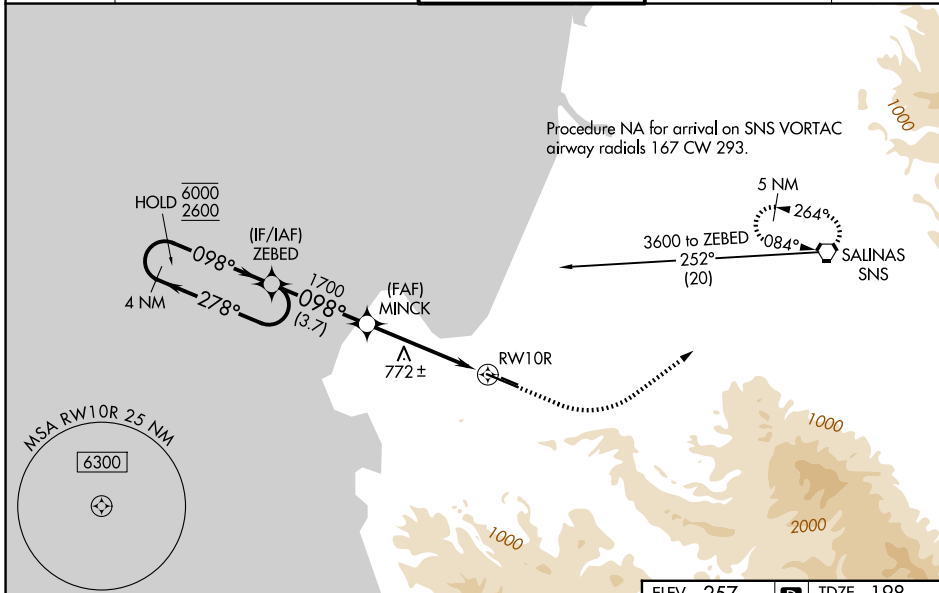
WAAS CH 69602 W10A	APP CRS 098°	Rwy Ldg TDZE Apt Elev	7000 198 257
--	------------------------	-----------------------------	---

RNAV (GPS) RWY 10R

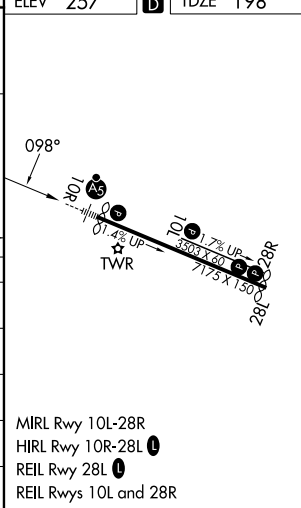
MONTEREY RGNL (MRY)

RNP APCH - GPS.	MALSR	MISSED APPROACH: Climb to 1000 then climbing left turn to 5000 direct SNS VORTAC and hold, continue climb-in-hold to 5000. *Missed approach requires minimum climb of 387 feet per NM to 1700.
<p>▼ For uncompensated Baro-VNAV systems, LNAV/VNAV NA below 2°C or above 54°C. Circling NA south of Rwy 10R-28L. For inop ALS, increase LPV all Cats visibility to 1½ SM and LNAV Cat C/D visibility to 2½ SM. *RVR 1800 authorized with use of FD or AP or HUD to DA.</p>		

ATIS 119.25	NORCAL APP CON 133.0 251.15 (001°-135°) 127.15 307.125 (136°-360°)	MONTEREY TOWER * 118.4 (CTAF) 257.8	GND CON 120.875 348.6	UNICOM 122.95
-----------------------	--	--	---------------------------------	-------------------------



	ZEBED		MINCK		RWY 10R	
	4 NM Holding Pattern				2.4 NM to RWY 10R	
	6000	2600	1700	1700		
	← 278°		098°		098°	
	098° →					
	GP 3.00°					
	TCH 45					
	3.7 NM		2.3 NM		2.4 NM	
CATEGORY	A	B	C	D		
LPV DA*	398/24		200 (200-½)			
LPV DA	677/50		479 (500-1)			
LNAV/VNAV DA	754/60		556 (500-1¼)			
LNAV MDA	980/24 782 (800-½)	980/40 782 (800-¾)	980-1¾ 782 (800-1¾)	782 (800-1¾)		
CIRCLING	980-1 723 (800-1)	980-1¼ 723 (800-1¼)	1280-3 1023 (1100-3)	NA		



SW-2, 11 JUN 2026 to 09 JUL 2026

SW-2, 11 JUN 2026 to 09 JUL 2026