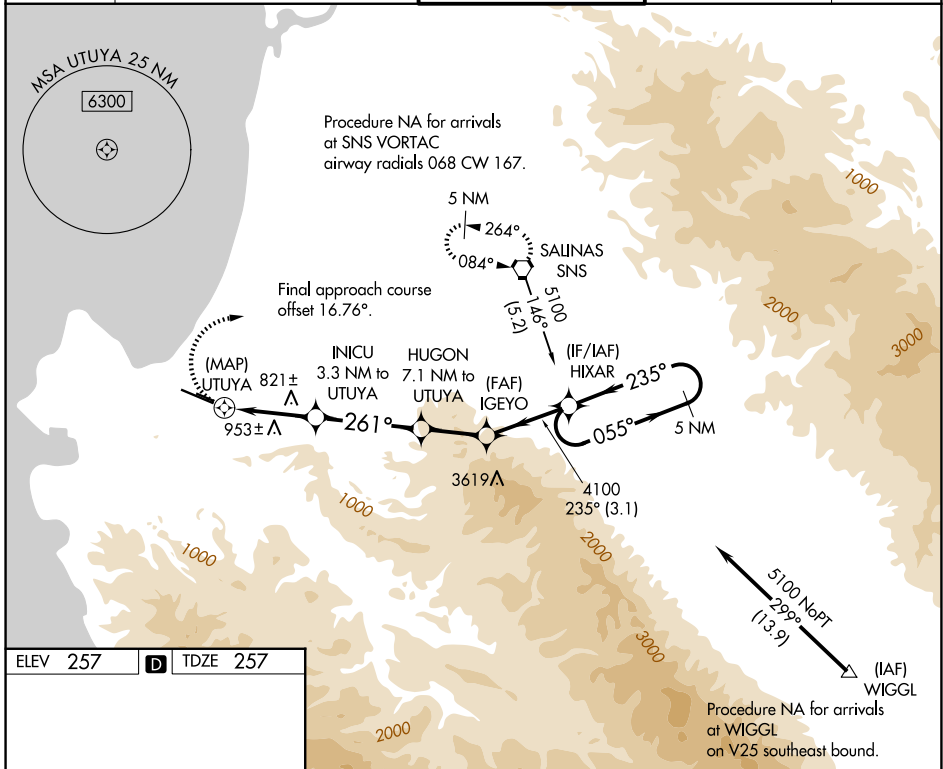


WAAS CH 61237 W28A	APP CRS 261°	Rwy Ldg TDZE Apt Elev	7000 257 257
--	------------------------	-----------------------------	---

RNAV (GPS) Y RWY 28L

MONTEREY RGNL (MRY)

<p>⚠ Circling NA South of Rwy 28L-10R. DME/DME RNP-0.3 NA. ⚠ Helicopter visibility reduction below RVR 4000 NA.</p>	<p>MISSED APPROACH: Climbing right turn to 6000 direct SNS VORTAC and hold, continue climb-in-hold to 6000.</p>			
<p>ATIS 119.25</p>	<p>NORCAL APP CON 133.0 251.15 (001°-135°) 127.15 307.125 (136°-360°)</p>	<p>MONTEREY TOWER ★ 118.4 (CTAF) 0 257.8</p>	<p>GND CON 120.875 348.6</p>	<p>UNICOM 122.95</p>



ELEV 257	D	TDZE 257																				
<p>6000 SNS</p> <p>INICU 3.3 NM to UTUYA</p> <p>HUGON 7.1 NM to UTUYA</p> <p>IGLEYO</p> <p>HIXAR 5 NM Holding Pattern</p> <p>UTUYA 1.6 NM to UTUYA</p> <p>UTUYA 1740</p> <p>3200</p> <p>4100</p> <p>5100</p> <p>261°</p> <p>235°</p> <p>055°</p> <p>235°</p> <p>3.60° TCH 47'</p>																						
<p>MIRL Rwy 10L-28R</p> <p>HIRL Rwy 10R-28L</p> <p>REIL Rwy 28L</p> <p>REIL Rwy 10L and 28R</p>	<table border="1"> <thead> <tr> <th>CATEGORY</th> <th>A</th> <th>B</th> <th>C</th> <th>D</th> </tr> </thead> <tbody> <tr> <td>LP MDA</td> <td>1080/55 823 (900-1)</td> <td>1080/60 823 (900-1¼)</td> <td>1080-2½ 823 (900-2½)</td> <td>NA</td> </tr> <tr> <td>LNAV MDA</td> <td>1120/55 863 (900-1)</td> <td>1120/60 863 (900-1¼)</td> <td>1120-2½ 863 (900-2½)</td> <td>NA</td> </tr> <tr> <td>CIRCLING</td> <td>1120-1¼</td> <td>863 (900-1¼)</td> <td>1260-3 1003 (1100-3)</td> <td>NA</td> </tr> </tbody> </table>		CATEGORY	A	B	C	D	LP MDA	1080/55 823 (900-1)	1080/60 823 (900-1¼)	1080-2½ 823 (900-2½)	NA	LNAV MDA	1120/55 863 (900-1)	1120/60 863 (900-1¼)	1120-2½ 863 (900-2½)	NA	CIRCLING	1120-1¼	863 (900-1¼)	1260-3 1003 (1100-3)	NA
CATEGORY	A	B	C	D																		
LP MDA	1080/55 823 (900-1)	1080/60 823 (900-1¼)	1080-2½ 823 (900-2½)	NA																		
LNAV MDA	1120/55 863 (900-1)	1120/60 863 (900-1¼)	1120-2½ 863 (900-2½)	NA																		
CIRCLING	1120-1¼	863 (900-1¼)	1260-3 1003 (1100-3)	NA																		