

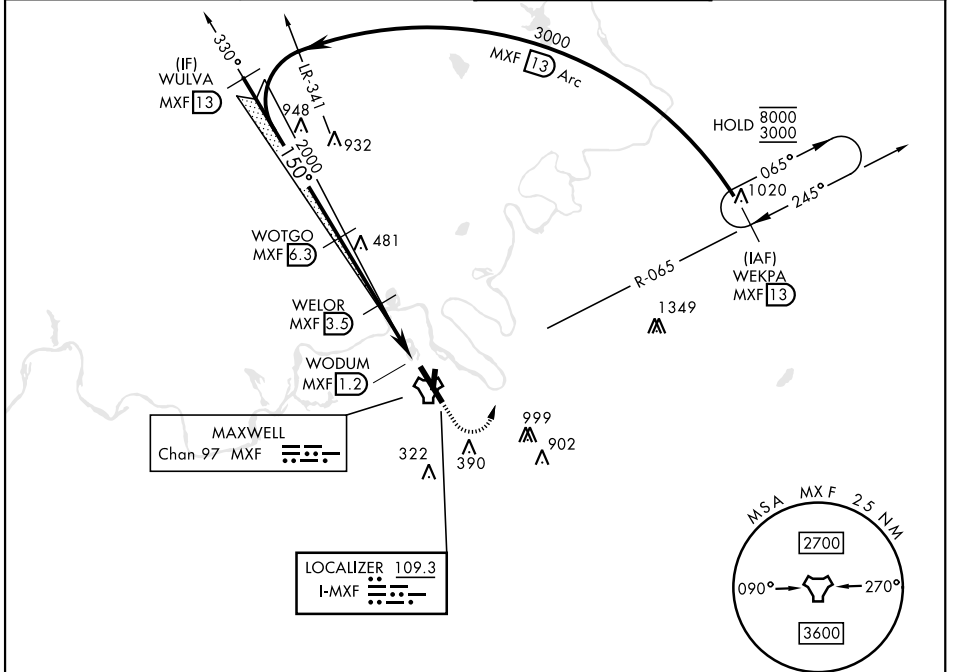
# ILS or LOC/DME RWY 15

LOC I-MXF <b>109.3</b>	APCH CRS <b>150°</b>	Rwy Idg <b>8008</b>
		TDZE <b>171</b>
		Arprt Elev <b>171</b>

[USAF]

MAXWELL AFB (KMXF)

RADAR required for missed approach.		ALSF-1 	MISSED APPROACH: Climb to 1000, then climbing left turn to 3000 to intercept MXF TACAN R-065 outbound to 13 DME (WEKPA) and hold.
* When ALS inop, increase RVR to 40 and vis to 3/4 mile. ** When ALS inop, increase CAT AB RVR to 35 and vis to 1 mile, CAT CDE vis to 1/4 mile. *** Circling not authorized E of Rwy 15-33.			
ATIS ★ <b>134.7 269.9</b>	MONTGOMERY APP CON ★ <b>121.2 269.05 (N)</b> <b>124.0 363.025 (S)</b>	TOWER ★ <b>118.15 253.5</b>	GND CON ★ <b>127.15 289.4</b>



SE-4, 11 JUN 2026 to 09 JUL 2026

SE-4, 11 JUN 2026 to 09 JUL 2026

EMERG SAFE ALT 100 NM 5000

<p>                     WULVA MXF 13                      3000                      150°                      2000                      1100                      WOTGO MXF 6.3                      WELOR MXF 3.5                      WODUM MXF 1.2                      GS 3.00° TCH 51                      2.8 NM                      2.3 NM                      0.5                 </p>	1000 3000 WEKPA R-065 MXF 13	ELEV 171 TDZE 171			
CATEGORY S-ILS 15 * S-LOC 15 ** CIRCLING ***	A 371/24 600/24 680-1	B 429 (500-1/2) 509 (600-1)	C 200 600/40 700-1 1/2 529 (600-1 1/2)	D (200-1/2) 429 920-2 1/2 749 (800-2 1/2)	E NA
HIRL Rwy 15-33 <p>                     LANDING ZONE                      TWR                      240                      264                      317                      246                 </p>					

# ILS or LOC/DME RWY 15