

TACAN RWY 15

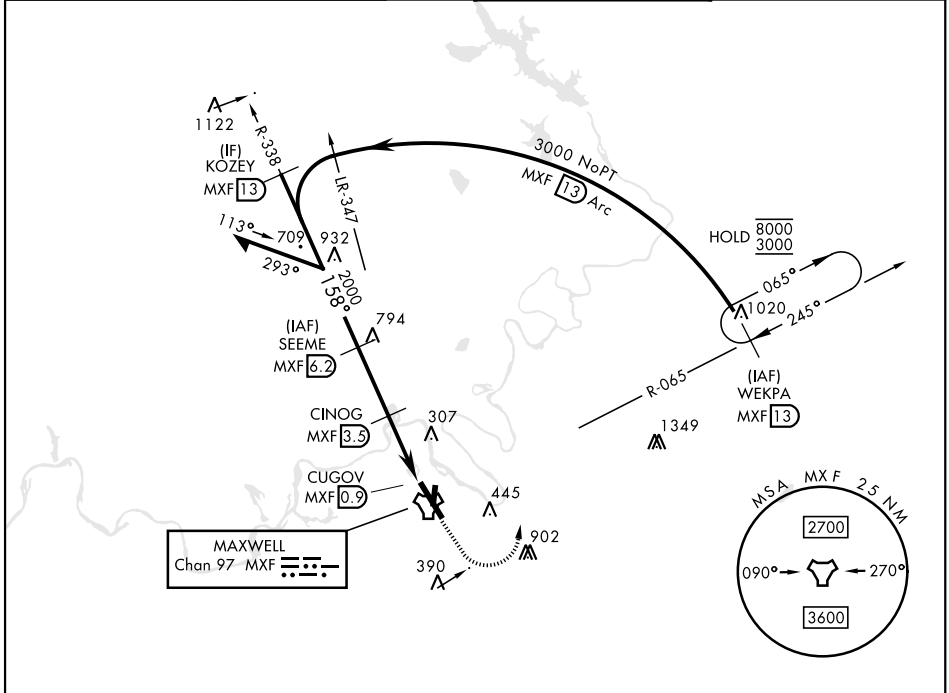
TACAN MXF Chan 97	APCH CRS 158°	Rwy ldg TDZE 171 Arpt Elev 171
-----------------------------	-------------------------	--

[USAF]

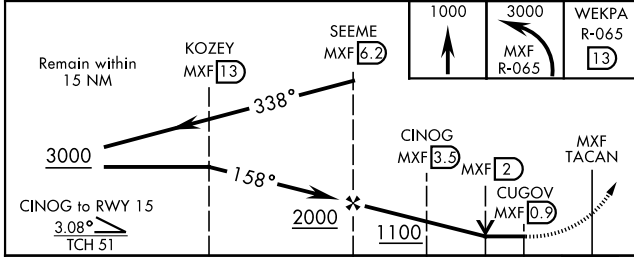
MAXWELL AFB (KMXF)

RADAR required for missed approach.		ALSF-1 	MISSED APPROACH: Climb to 1000, then climbing left turn to 3000 to intercept MXF TACAN R-065 outbound to 13 DME (WEKPA) and hold.
* When ALS inop, increase CAT AB RVR to 55 and vis to 1 mile, CAT CDE and vis to 1 1/2 miles. ** Circling not authorized E of Rwy 15-33.			

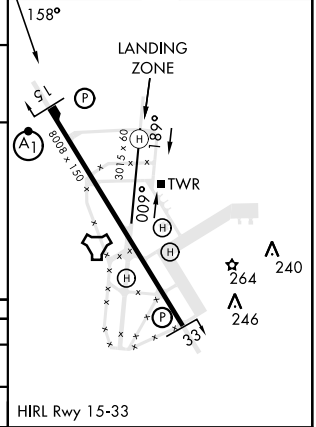
ATIS ★ 134.7 269.9	MONTGOMERY APP CON ★ 121.2 269.05 (N) 124.0 363.025 (S)	TOWER ★ 118.15 253.5	GND CON ★ 127.15 289.4
------------------------------	---	--------------------------------	----------------------------------



EMERG SAFE ALT 100 NM 5000



ELEV	171	TDZE	171
------	-----	------	-----



CATEGORY	A	B	C	D	E
S-15 *	620/24	449 (500-1/2)	620/45	449 (500-7/8)	
CIRCLING **	680-1	509 (600-1)	700-1 1/2 529 (600-1 1/2)	920-2 1/2 749 (800-2 1/2)	NA

TACAN RWY 15

SE-4, 11 JUN 2026 to 09 JUL 2026

SE-4, 11 JUN 2026 to 09 JUL 2026