

# TACAN RWY 33

TACAN MXF Chan <b>97</b>	APCH CRS <b>323°</b>	Rwy ldg TDZE <b>166</b> Arprt Elev <b>171</b>
-----------------------------	-------------------------	-----------------------------------------------------

[USAF]

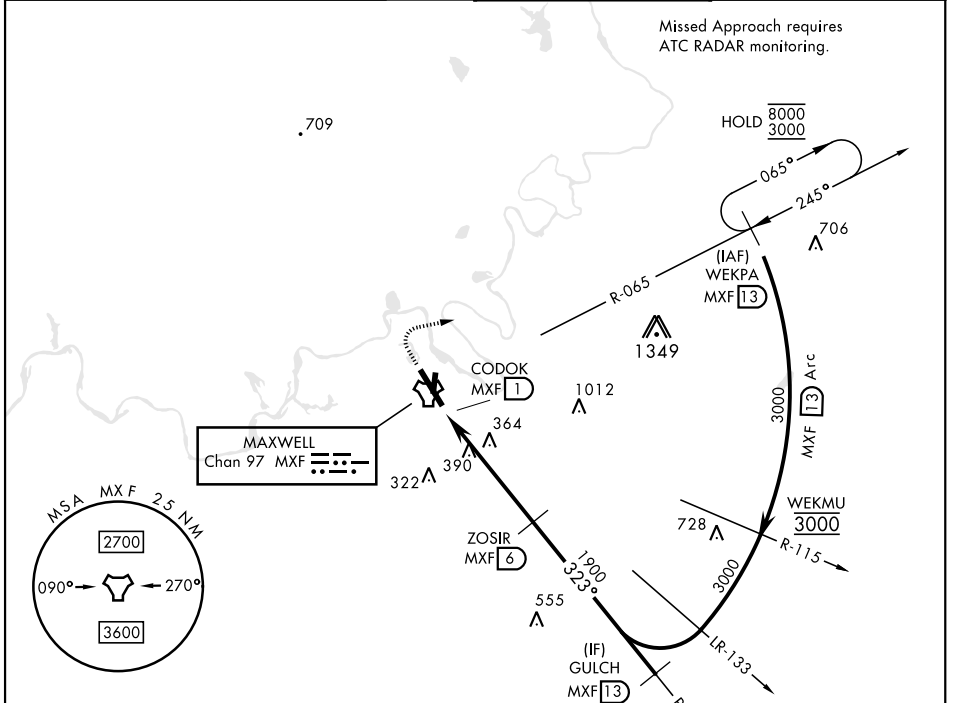
MAXWELL AFB (KMXF)

▼ \* Circling not authorized E of Rwy 15-33.

MISSED APPROACH: Climb to 1000, then climbing right turn to 3000 to intercept MXF TACAN R-065 outbound to 13 DME (WEKPA) and hold.

ATIS ★ <b>134.7 269.9</b>	MONTGOMERY APP CON ★ <b>121.2 269.05 (N)</b> <b>124.0 363.025 (S)</b>	TOWER ★ <b>118.15 253.5</b>	GND CON ★ <b>127.15 289.4</b>
------------------------------	-----------------------------------------------------------------------------	--------------------------------	----------------------------------

Missed Approach requires  
ATC RADAR monitoring.

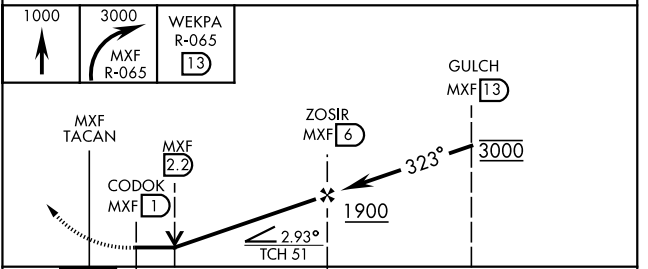
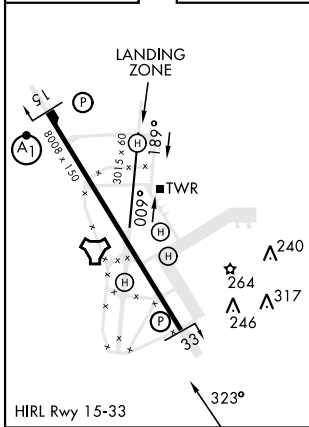


SE-4, 11 JUN 2026 to 09 JUL 2026

SE-4, 11 JUN 2026 to 09 JUL 2026

EMERG SAFE ALT 100 NM 5000

ELEV 171	TDZE 166
----------	----------



CATEGORY	A	B	C	D	E
S-33	740-1 574 (600-1)		740-1 5/8 574 (600-1 1/2)		
<b>C</b> CIRCLING *	740-1 569 (600-1)		740-1 5/8 569 (600-1 1/2)	920-2 1/2 749 (800-2 1/2)	NA

# TACAN RWY 33