

WAAS CH <b>61135</b> <b>W36A</b>	APP CRS <b>004°</b>	Rwy Ldg <b>4000</b> TDZE <b>547</b> Apt Elev <b>551</b>
--	------------------------	---

# RNAV (GPS) RWY 36

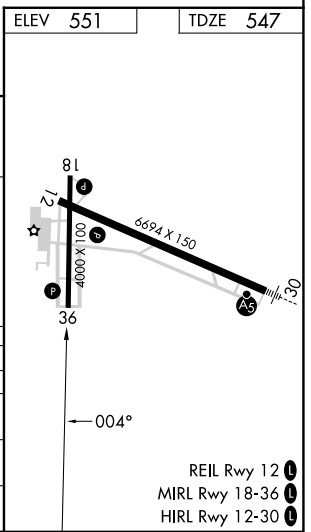
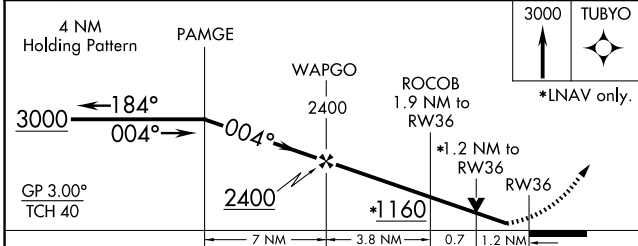
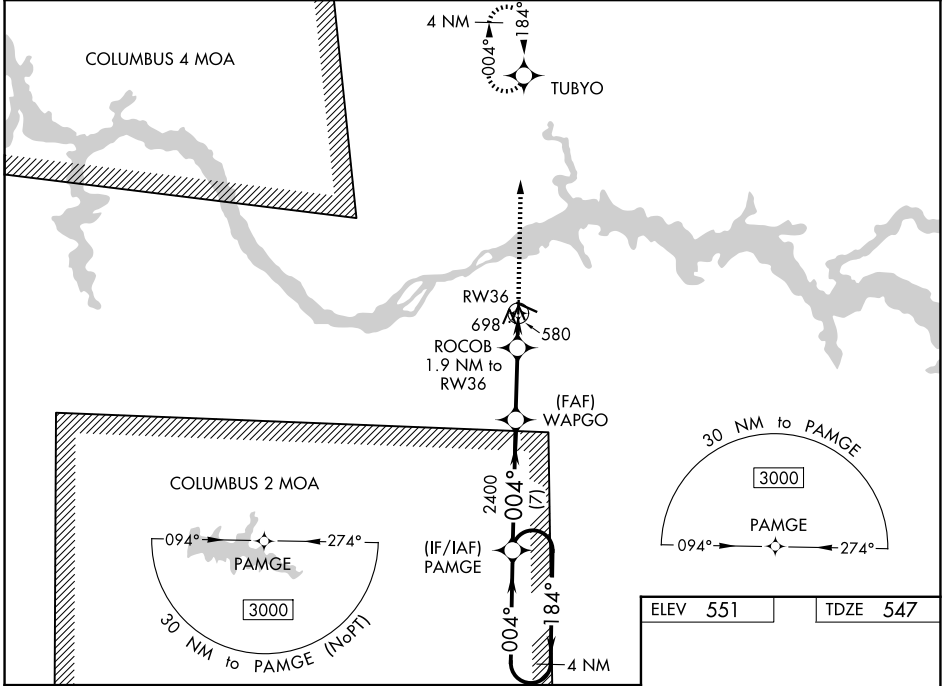
NORTHWEST ALABAMA RGNL (MISL)

RNP APCH-GPS.

▼ Circling to Rwy 18 NA at night. For uncompensated Baro-VNAV systems, LNAV/VNAV NA below -4°C or above 54°C. Baro-VNAV and VDP NA when using Decatur altimeter setting. When local altimeter setting not received, use Decatur altimeter setting and increase LPV DA to 874, LNAV/VNAV DA to 1012 and all MDA 100 feet, increase LPV and LNAV/VNAV all Cats visibility ¼ mile, increase LNAV Cats C/D visibility ¼ mile, and Circling Cats C/D visibility ½ mile.

MISSED APPROACH:  
Climb to 3000 direct TUBYO and hold.

ASOS <b>119.425</b>	MEMPHIS CENTER <b>120.8 307.0</b>	GCO <b>121.725</b>	UNICOM <b>123.05 (CTAF) 0</b>
------------------------	--------------------------------------	-----------------------	----------------------------------



CATEGORY	A	B	C	D
LPV DA		797-1	250 (300-1)	
LNAV/VNAV DA		935-1 3/8	388 (400-1 3/8)	
LNAV MDA	960-1	413 (500-1)	960-1 1/8	413 (500-1 1/8)
CIRCLING	1040-1	489 (500-1)	1280-2	1280-2 1/4
			729 (800-2)	729 (800-2 1/4)

- REIL Rwy 12 1
- MIRL Rwy 18-36 1
- HIRL Rwy 12-30 1

SE-4, 11 JUN 2026 to 09 JUL 2026

SE-4, 11 JUN 2026 to 09 JUL 2026