


WAAS CH 93819 W18A	APP CRS 177°	Rwy Ldg 9503 TDZE 23 Apt Elev 25
--	------------------------	---

RNAV (GPS) RWY 18

MYRTLE BEACH INTL (MYR)

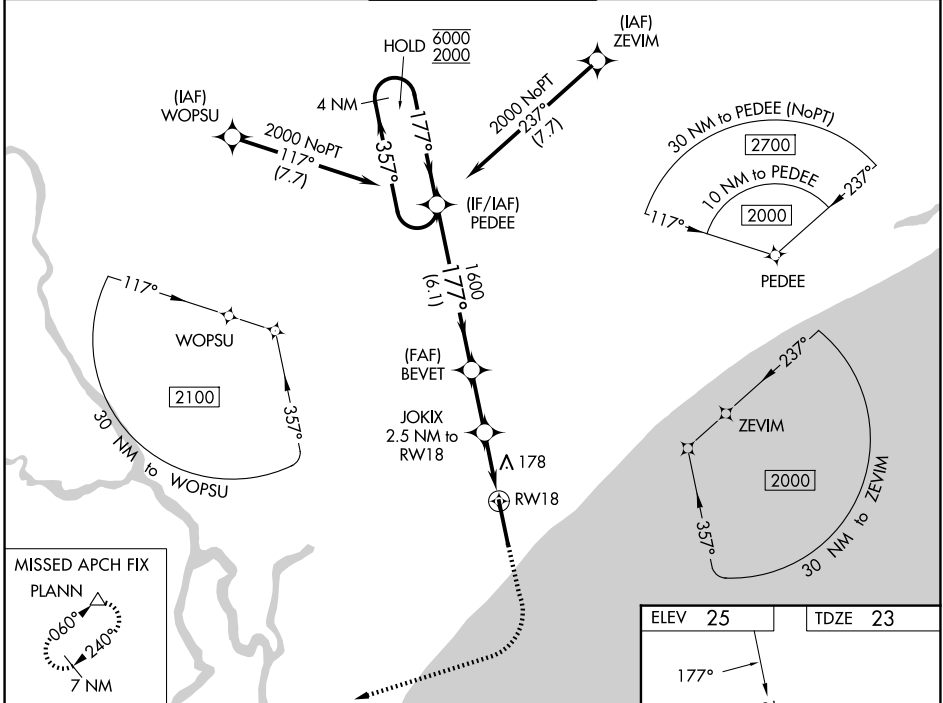
RNP APCH - GPS

⚠ For uncompensated Baro-VNAV systems, LNAV/VNAV NA below -15°C or above 54°C. For inop ALS, increase LPV Cat E visibility to RVR 4000, increase LNAV/VNAV Cat E visibility to 1½ mile and increase LNAV/Cats C, D and E visibility to RVR 6000.
*RVR 1800 authorized with use of FD or AP or HUD to DA.

MALSR 

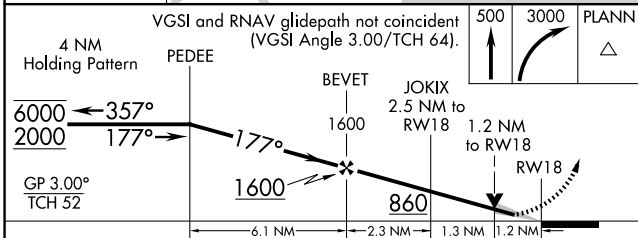
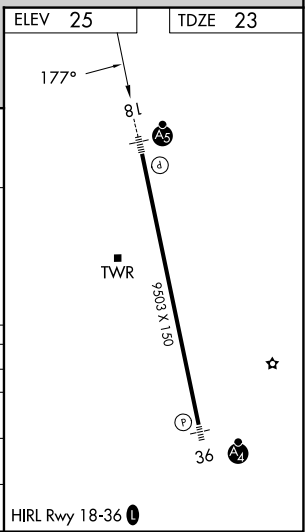
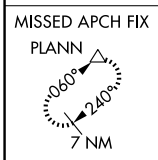
MISSED APPROACH: Climb to 500 then climbing right turn to 3000 direct PLANN and hold, continue climb-in-hold to 3000.

ATIS 123.925	MYRTLE BEACH APP CON * (171° - 321°) 127.4 257.95 (322° - 170°) 119.2 350.3	MYRTLE BEACH TOWER * 128.45 (CTAF) 0 259.3	GND CON 120.3 275.8	CLNC DEL 120.3	UNICOM 122.95
------------------------	---	---	-------------------------------	--------------------------	-------------------------



SE-2, 11 JUN 2026 to 09 JUL 2026

SE-2, 11 JUN 2026 to 09 JUL 2026



VGSI and RNAV glidepath not coincident (VGSI Angle 3.00/TCH 64).	500	3000	PLANN		
4 NM Holding Pattern	PEDEE	BEVET	JOKIX		
6000 ← 357°	2000 → 177°	1600	860		
GP 3.00° TCH 52	1600	860	1.2 NM to RWY 18		
	6.1 NM	2.3 NM	1.3 NM		
CATEGORY	A	B	C	D	E
LPV DA*	223/24		200 (200-½)		
LNAV/VNAV DA	465/50		442 (500-1)		
LNAV MDA	440/24	417 (500-½)	440/40		417 (500-¾)
CIRCLING	560-1	535 (600-1)	700-2 675 (700-2)	700-2¼ 675 (700-2¼)	700-2½ 675 (700-2½)