

(DRURY4.DRURY) 25331

AL-282 (FAA)

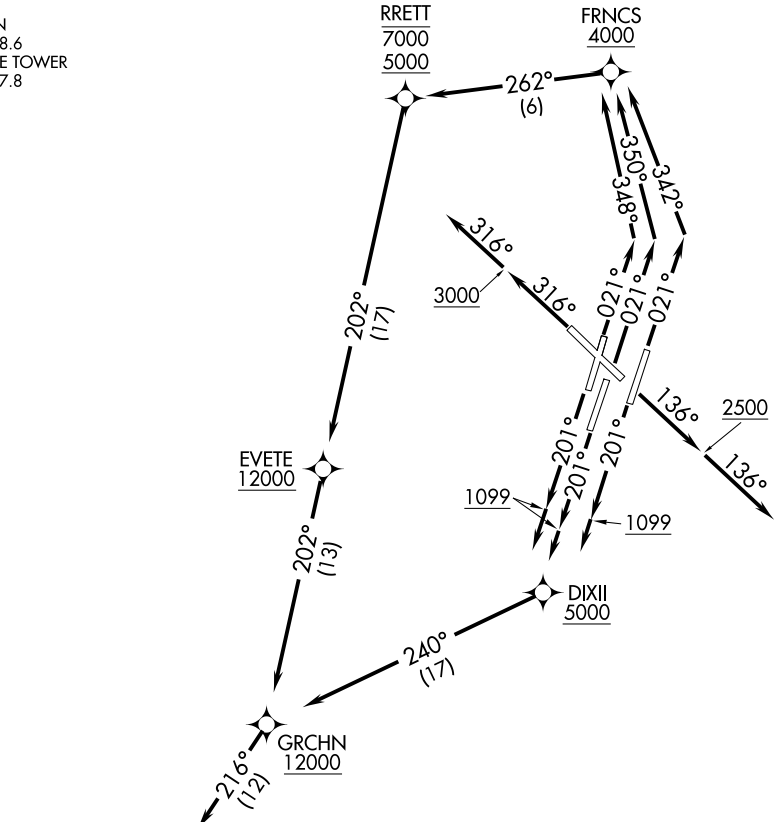
NASHVILLE INTL (BNA)  
NASHVILLE, TENNESSEE

# DRURY FOUR DEPARTURE (RNAV)

NASHVILLE DEP CON  
119.35 372.0  
D-ATIS 135.1  
CLNC DEL 126.05  
CPDLC  
GND CON  
121.9 348.6  
NASHVILLE TOWER  
118.6 257.8

RNAV 1 - DME/DME/IRU or GPS.  
RADAR required.

**TOP ALTITUDE:  
15000**



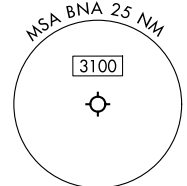
TAKEOFF MINIMUMS:

Rwy 13: Standard.

Rwys 2L/C/R, 20L/C/R: Standard with minimum climb of 500'/NM to 1099.

Rwy 31: Standard with minimum climb of 250'/NM to 3000.

NOTE: Jet aircraft only.



NOTE: Chart not to scale.

(CONTINUED ON FOLLOWING PAGE)

# DRURY FOUR DEPARTURE (RNAV)

(DRURY4.DRURY) 27NOV25

NASHVILLE, TENNESSEE  
NASHVILLE INTL (BNA)

SE-1, 11 JUN 2026 to 09 JUL 2026

SE-1, 11 JUN 2026 to 09 JUL 2026

# DRURY FOUR DEPARTURE (RNAV)



## DEPARTURE ROUTE DESCRIPTION

TAKEOFF RUNWAY 2L: Climb on heading 021° to intercept course 348° to cross FRNCS at or above 4000, then on track 262° to cross RRETT between 5000 and 7000, then on track 202° to cross EVETE at or above 12000, then on track 202° to cross GRCHN at or above 12000, thence. . . .

TAKEOFF RUNWAY 2C: Climb on heading 021° to intercept course 350° to cross FRNCS at or above 4000, then on track 262° to cross RRETT between 5000 and 7000, then on track 202° to cross EVETE at or above 12000, then on track 202° to cross GRCHN at or above 12000, thence. . . .

TAKEOFF RUNWAY 2R: Climb on heading 021° to intercept course 342° to cross FRNCS at or above 4000, then on track 262° to cross RRETT between 5000 and 7000, then on track 202° to cross EVETE at or above 12000, then on track 202° to cross GRCHN at or above 12000, thence. . . .

TAKEOFF RUNWAY 13: Climb on heading 136° to 2500, then on heading 136° or as assigned by ATC for RADAR vectors to cross GRCHN at or above 12000, thence. . . .

TAKEOFF RUNWAYS 20L/C/R: Climb on heading 201° to 1099, then direct DIXII at or above 5000, then on track 240° to cross GRCHN at or above 12000, thence. . . .

TAKEOFF RUNWAY 31: Climb on heading 316° to 3000, then on heading 316° or as assigned by ATC for RADAR vectors to cross GRCHN at or above 12000, thence. . . .

. . . .on track 216° to DRURY. Maintain 15000, expect filed altitude 10 minutes after departure.

HAGIE TRANSITION (DRURY4.HAGIE)

JALAR TRANSITION (DRURY4.JALAR)

SE-1, 11 JUN 2026 to 09 JUL 2026

SE-1, 11 JUN 2026 to 09 JUL 2026