

(KRSTA4.KRSTA) 25331

AL-282 (FAA)

NASHVILLE INTL (BNA)  
NASHVILLE, TENNESSEE

# KRSTA FOUR DEPARTURE (RNAV)

NASHVILLE DEP CON  
119.35 372.0  
D-ATIS 135.1  
CLNC DEL 126.05  
CPDLC  
GND CON  
121.9 348.6  
NASHVILLE TOWER  
118.6 257.8

RNAV 1 - DME/DME/IRU or GPS.

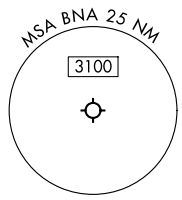
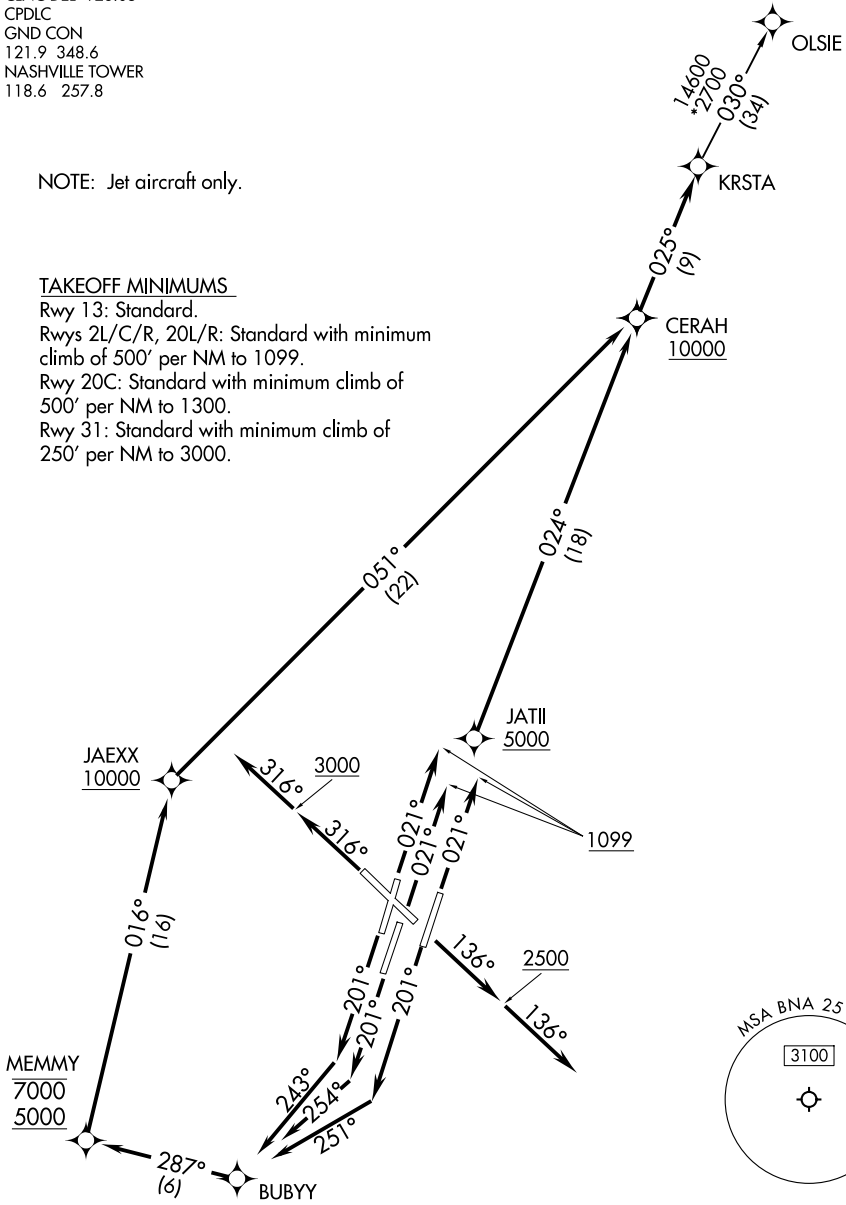
RADAR required.

**TOP ALTITUDE:  
15000**

NOTE: Jet aircraft only.

### TAKEOFF MINIMUMS

Rwy 13: Standard.  
Rwys 2L/C/R, 20L/R: Standard with minimum climb of 500' per NM to 1099.  
Rwy 20C: Standard with minimum climb of 500' per NM to 1300.  
Rwy 31: Standard with minimum climb of 250' per NM to 3000.



NOTE: Chart not to scale.

(CONTINUED ON FOLLOWING PAGE)

SE-1, 11 JUN 2026 to 09 JUL 2026

SE-1, 11 JUN 2026 to 09 JUL 2026

KRSTA FOUR DEPARTURE (RNAV)  
(KRSTA4.KRSTA) 27NOV25

NASHVILLE, TENNESSEE  
NASHVILLE INTL (BNA)

# KRSTA FOUR DEPARTURE (RNAV)



## DEPARTURE ROUTE DESCRIPTION

TAKEOFF RUNWAYS 2L/C/R: Climb on heading 021° to 1099, then direct to cross JATII at or above 5000, then on track 024° to cross CERAH at or above 10000, thence. . . .

TAKEOFF RUNWAY 13: Climb on heading 136° to 2500, then on heading 136° or as assigned by ATC for RADAR vectors to cross CERAH at or above 10000, thence. . . .

TAKEOFF RUNWAY 20L: Climb on heading 201° to intercept course 251° to BUBYY, then on track 287° to cross MEMMY between 5000 and 7000, then on track 016° to cross JAEXX at or above 10000, then on track 051° to cross CERAH at or above 10000, thence. . . .

TAKEOFF RUNWAY 20C: Climb on heading 201° to intercept course 254° to BUBYY, then on track 287° to cross MEMMY between 5000 and 7000, then on track 016° to cross JAEXX at or above 10000, then on track 051° to cross CERAH at or above 10000, thence. . . .

TAKEOFF RUNWAY 20R: Climb on heading 201° to intercept course 243° to BUBYY, then on track 287° to cross MEMMY between 5000 and 7000, then on track 016° to cross JAEXX at or above 10000, then on track 051° to cross CERAH at or above 10000, thence. . . .

TAKEOFF RUNWAY 31: Climb on heading 316° to 3000, then on heading 316° or as assigned by ATC for RADAR vectors to cross CERAH at or above 10000, thence. . . .

. . . on track 025° to KRSTA. Maintain 15000. Expect filed altitude 10 minutes after departure.

OLSIE TRANSITION (KRSTA4.OLSIE)

SE-1, 11 JUN 2026 to 09 JUL 2026

SE-1, 11 JUN 2026 to 09 JUL 2026