

**TOP ALTITUDE:
4000**

TAKEOFF MINIMUMS:

Rwys 2C/R, 13: Standard.

Rwy 2L: Standard with minimum climb of 205' per NM to 2600.

Rwy 20L: Standard with minimum climb of 225' per NM to 2600.

Rwy 20C: Standard with minimum climb of 260' per NM to 2600.

Rwy 20R: Standard with minimum climb of 235' per NM to 2600.

Rwy 31: Standard with minimum climb of 240' per NM to 2600.

(NARRATIVE ON FOLLOWING PAGE)

NOTE: Chart not to scale.

D-ATIS 135.1
CLNC DEL 126.05
CPDLC
GND CON 121.9 348.6
NASHVILLE TOWER 118.6 257.8

BRICKYARD
116.3 VHP
Chan 110

LOUISVILLE
114.8 IUU
Chan 95

POCKET CITY
113.3 PVX
Chan 80

WEST DEP CON
119.35 372.0

EAST DEP CON
118.4 360.7

LEXINGTON
112.6 HYK
Chan 73

LONDON
116.55 LOZ
Chan 112 (Y)

WALNUT RIDGE
114.5 ARG
Chan 92

NASHVILLE
114.1 BNA
Chan 88

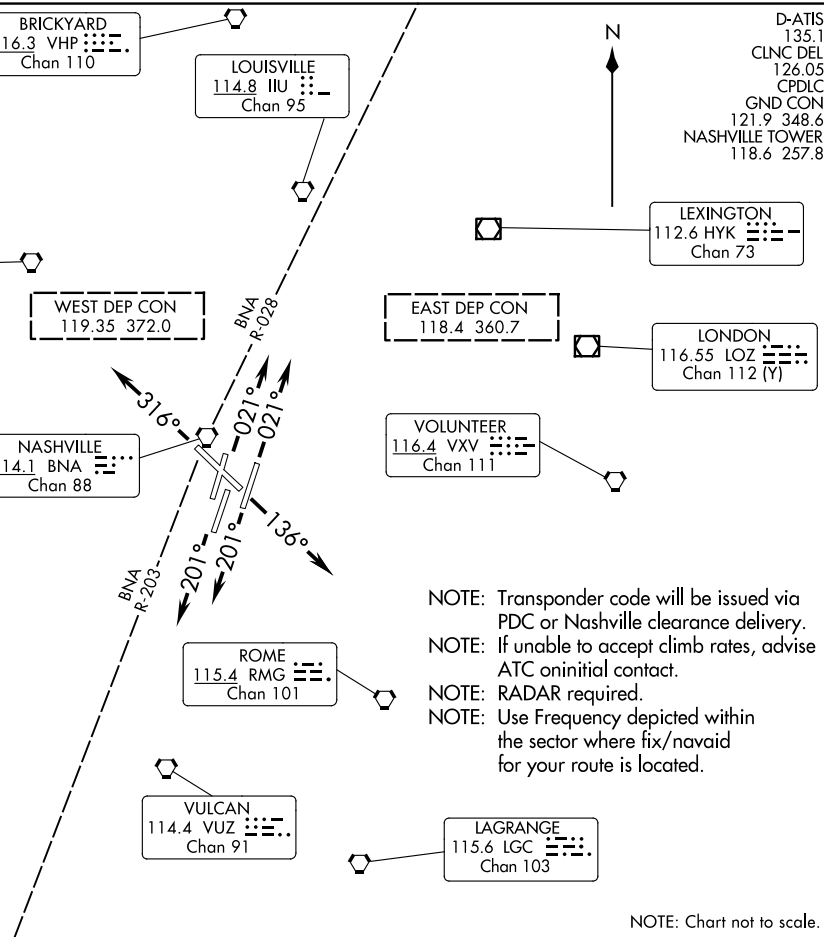
VOLUNTEER
116.4 VXV
Chan 111

ROME
115.4 RMG
Chan 101

VULCAN
114.4 VUZ
Chan 91

LAGRANGE
115.6 LGC
Chan 103

MAGNOLIA
113.2 MHZ
Chan 79



NASHVILLE SEVEN DEPARTURE



DEPARTURE ROUTE DESCRIPTION

TAKEOFF RUNWAYS 2L/C/R: Climb on heading 021° or assigned ATC heading, thence....

TAKEOFF RUNWAY 13: Climb on heading 136° or assigned ATC heading, thence....

TAKEOFF RUNWAYS 20L/C/R: Climb on heading 201° or assigned ATC heading, thence....

TAKEOFF RUNWAY 31: Climb on heading 316° or assigned ATC heading, thence....

....maintain 4000. Expect radar vectors and clearance to filed altitude within 5 minutes after departure.

SE-1, 11 JUN 2026 to 09 JUL 2026

SE-1, 11 JUN 2026 to 09 JUL 2026