

PARDN FOUR DEPARTURE (RNAV)  
(PARDN4, PARDN) 22NOV25

NASHVILLE, TENNESSEE  
NASHVILLE INTL (BNA)

(PARDN4, PARDN) 25331  
PARDN FOUR DEPARTURE (RNAV)

NASHVILLE INTL (BNA)  
NASHVILLE, TENNESSEE

AL-282 (FAA)

NASHVILLE DEP CON 119.35 372.0  
D-ATIS 135.1  
CLNC DEL 126.05  
CPDLC  
GND CON 121.9 348.6  
NASHVILLE TOWER 118.6 257.8

RNAV 1 - DME/DME/IRU or GPS.  
RADAR required.

TOP ALTITUDE:  
15000

NAKIY

HODJS

PARDN

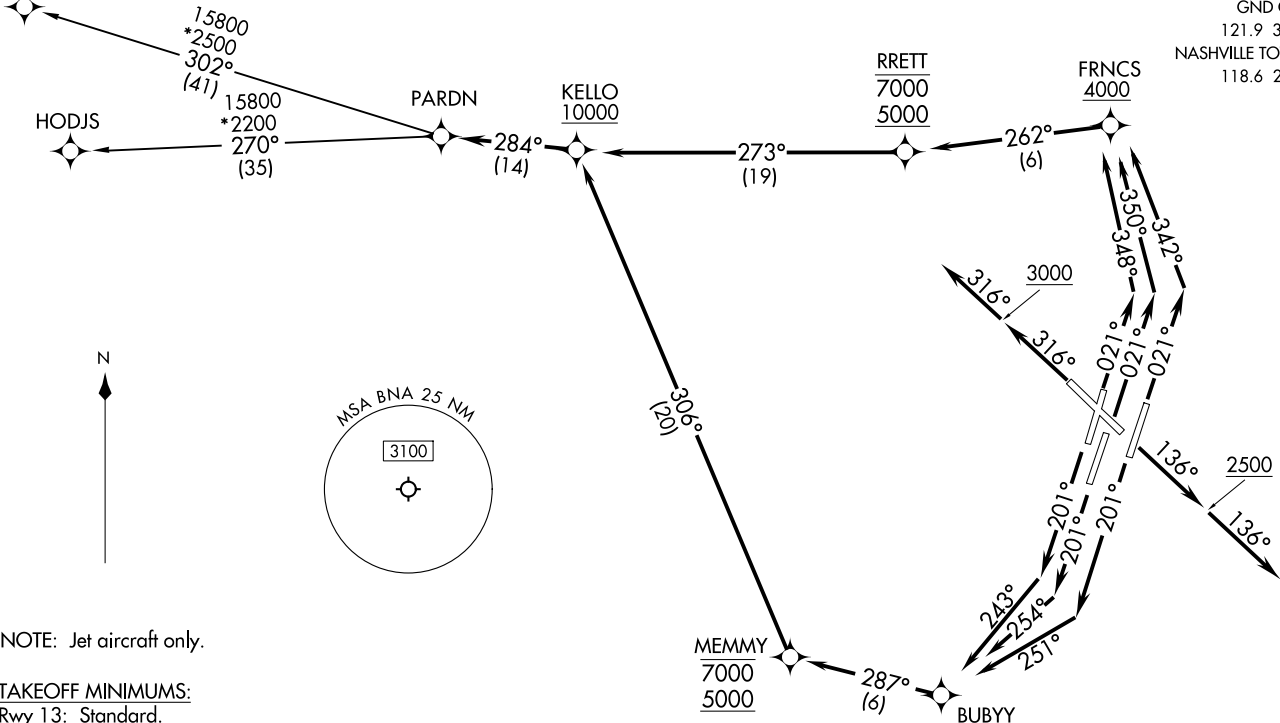
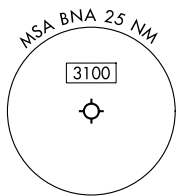
KELLO  
10000

RRETT  
7000  
5000

FRNCS  
4000

MEMMY  
7000  
5000

BUBYY



NOTE: Jet aircraft only.

TAKEOFF MINIMUMS:

- Rwy 13: Standard.
- Rwys 2C/L/R, 20L/R: Standard with minimum climb of 500' per NM to 1099.
- Rwy 20C: Standard with minimum climb of 500' per NM to 1300.
- Rwy 31: Standard with minimum climb of 250' per NM to 3000.

(CONTINUED ON FOLLOWING PAGE)

NOTE: Chart not to scale.

# PARDN FOUR DEPARTURE (RNAV)



## DEPARTURE ROUTE DESCRIPTION

TAKEOFF RUNWAY 2L: Climb on heading 021° to intercept course 348° to cross FRNCS at or above 4000, then on track 262° to cross RRETT between 5000 and 7000, then on track 273° to cross KELLO at or above 10000, thence. . . .

TAKEOFF RUNWAY 2C: Climb on heading 021° to intercept course 350° to cross FRNCS at or above 4000, then on track 262° to cross RRETT between 5000 and 7000, then on track 273° to cross KELLO at or above 10000, thence. . . .

TAKEOFF RUNWAY 2R: Climb on heading 021° to intercept course 342° to cross FRNCS at or above 4000, then on track 262° to cross RRETT between 5000 and 7000, then on track 273° to cross KELLO at or above 10000, thence. . . .

TAKEOFF RUNWAY 13: Climb on heading 136° to 2500, then on heading 136° or as assigned by ATC for RADAR vectors to cross KELLO at or above 10000, thence. . . .

TAKEOFF RUNWAY 20L: Climb on heading 201° to intercept course 251° to BUBYY, then on track 287° to cross MEMMY between 5000 and 7000, then on track 306° to cross KELLO at or above 10000, thence. . . .

TAKEOFF RUNWAY 20C: Climb on heading 201° to intercept course 254° to BUBYY, then on track 287° to cross MEMMY between 5000 and 7000, then on track 306° to cross KELLO at or above 10000, thence. . . .

TAKEOFF RUNWAY 20R: Climb on heading 201° to intercept course 243° to BUBYY, then on track 287° to cross MEMMY between 5000 and 7000, then on track 306° to cross KELLO at or above 10000, thence. . . .

TAKEOFF RUNWAY 31: Climb on heading 316° to 3000, then on heading 316° or as assigned by ATC for RADAR vectors to cross KELLO at or above 10000, thence. . . .

. . . on track 284° to PARDN. Maintain 15000. Expect filed altitude 10 minutes after departure.

HODJS TRANSITION (PARDN4.HODJS)

NAKIY TRANSITION (PARDN4.NAKIY)

SE-1, 11 JUN 2026 to 09 JUL 2026

SE-1, 11 JUN 2026 to 09 JUL 2026