

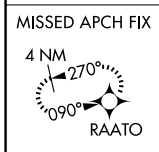
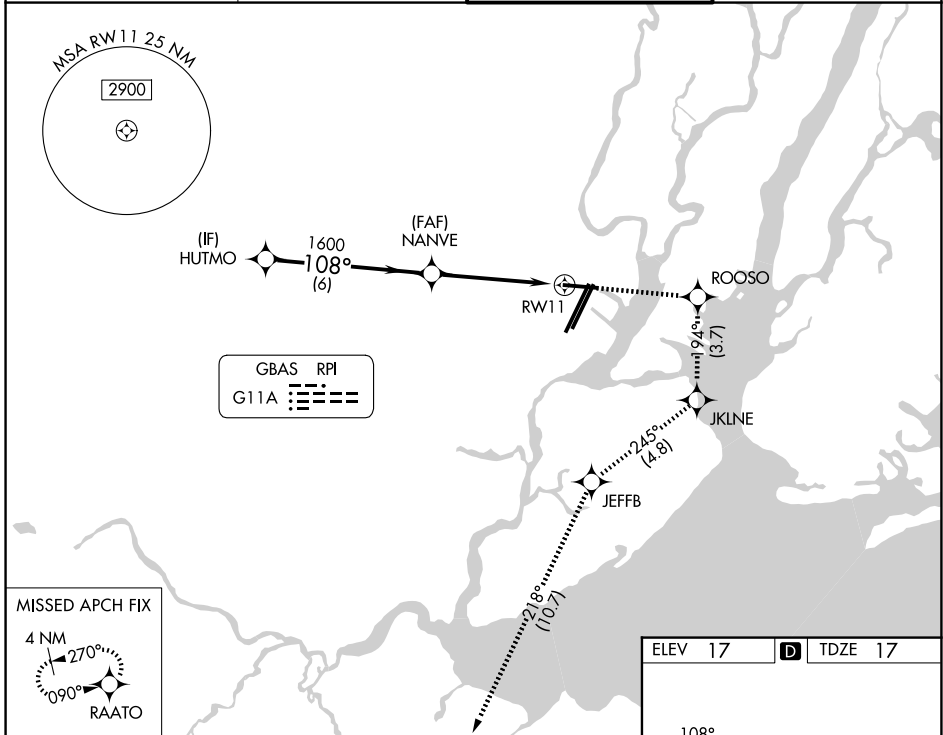
GBAS CH 21905 G11A	APP CRS 108°	Rwy Ldg TDZE 17 Apt Elev 17	6725
--	------------------------	---	-------------

GLS RWY 11

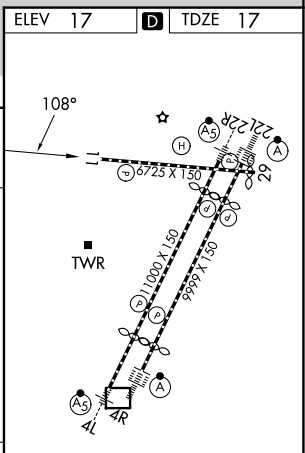
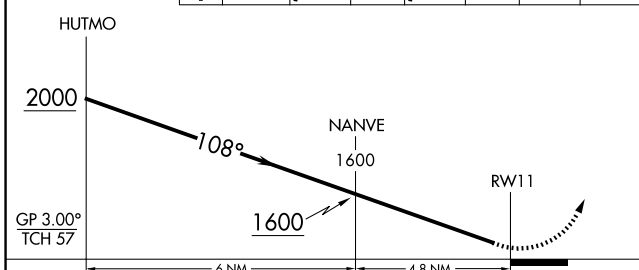
NEWARK LIBERTY INTL (EWR)

RNP APCH - GPS. RADAR required.		MISSED APPROACH: (Do not exceed 230K until JKLINE) Climb to 2000 direct ROOSO and right turn on track 194° to JKLINE and right turn on track 245° to JEFFB and left turn on track 218° to RAATO and hold.	
▼ Autopilot coupled approach NA below 312.			
▲ NA Rwy 11 helicopter visibility reduction below RVR 4000 NA.			

D-ATIS 115.7 134.825	NEWARK APP CON 128.55 379.9	NEWARK TOWER 118.3 257.6	GND CON 121.8
--------------------------------	---------------------------------------	------------------------------------	-------------------------



2000	ROOSO	JKLINE	JEFFB	RAATO
↑	↻ tr 194°	↻ tr 245°	↻ tr 218°	★



CATEGORY	A	B	C	D
GLS DA	312/45		295 (300-7%)	

HIRL all rwys
REIL Rwy 11, 22R, and 29
TDZL/RCLS all rwys

NE-2, 11 JUN 2026 to 09 JUL 2026

NE-2, 11 JUN 2026 to 09 JUL 2026