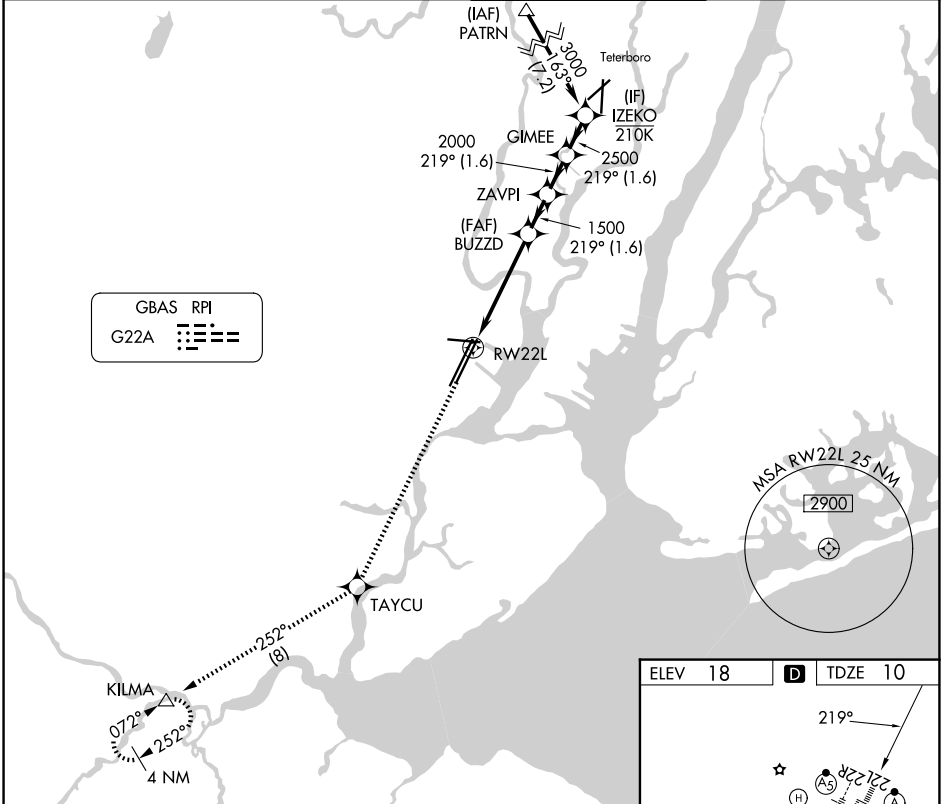


GBAS CH 21494 G22A	APP CRS 219°	Rwy Ldg TDZE 10 Apt Elev 18
--	------------------------	---

GLS RWY 22L

NEWARK LIBERTY INTL (EWR)

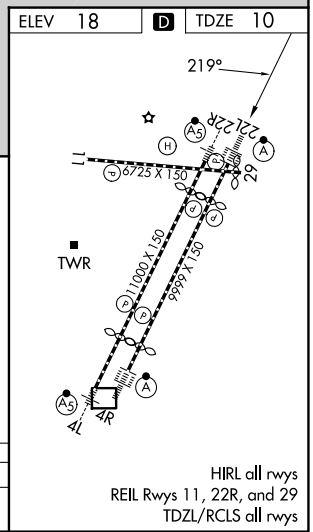
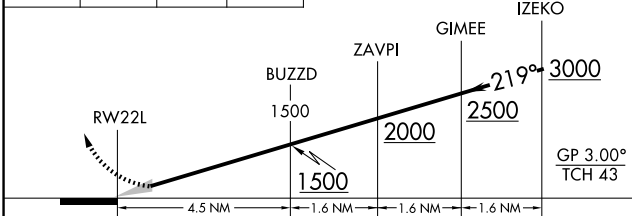
RNP APCH - GPS.		ALSF-2	MISSED APPROACH: Climb to 3000 direct TAYCU and on track 252° to KILMA and hold.
⚠ Autopilot coupled approach NA below 210. ⚠ NA Caution, departing TEB Rwy 24 traffic climbing to 1500' MSL.			
D-ATIS 115.7 134.825	NEWARK APP CON 128.55 379.9	NEWARK TOWER 118.3 257.6	GND CON 121.8



NE-2, 11 JUN 2026 to 09 JUL 2026

NE-2, 11 JUN 2026 to 09 JUL 2026

3000	TAYCU	KILMA	VGSI and GLS glidepath not coincident (VGSI Angle 3.00/TCH 60).
↑	⊙	△	
	tr 252°		



GLS RWY 22L