

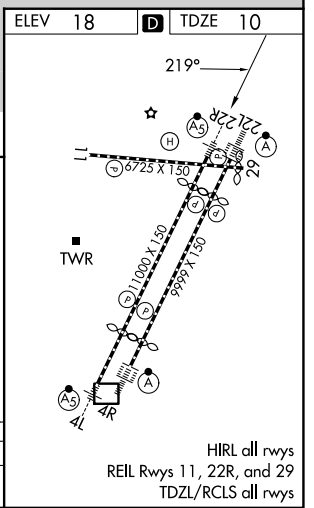
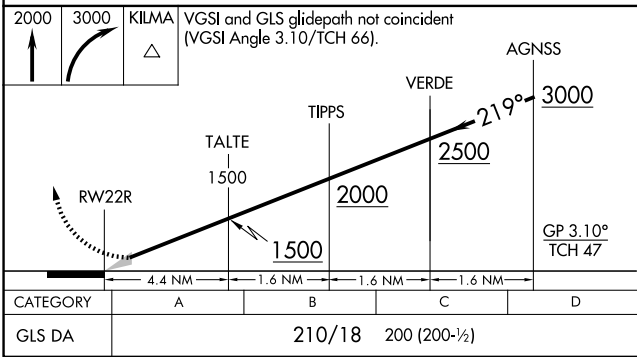
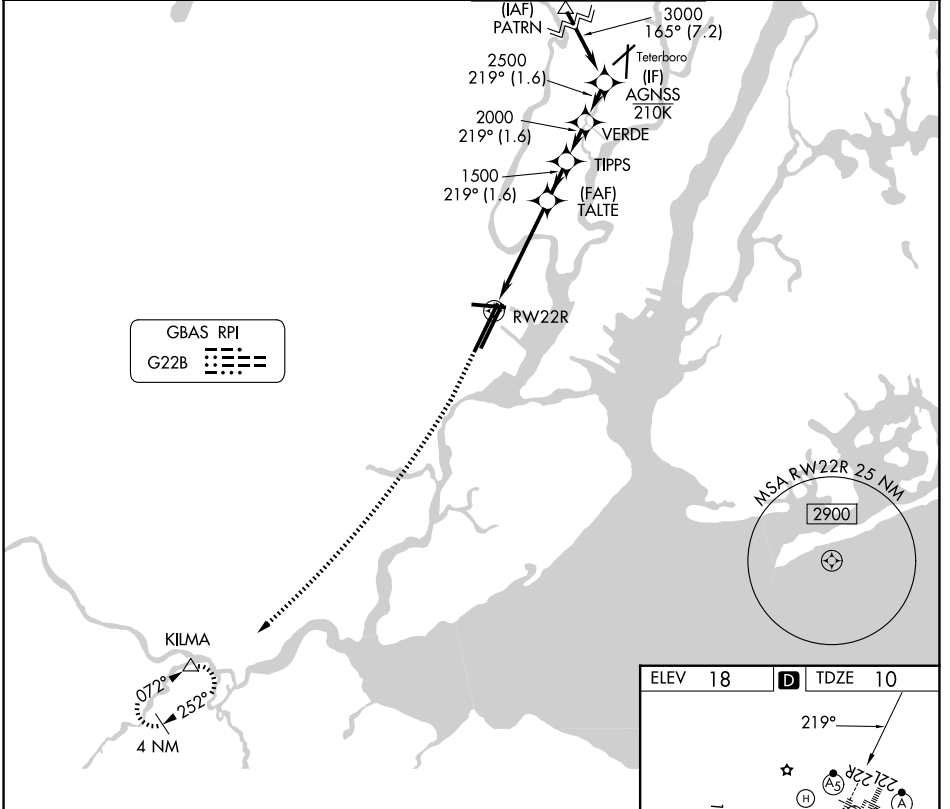
GBAS CH 20672 G22B	APP CRS 219°	Rwy Ldg TDZE 10 Apt Elev 18	9559
--	------------------------	---	-------------

GLS RWY 22R

NEWARK LIBERTY INTL (EWR)

RNP APCH - GPS.		MALSRL	MISSED APPROACH: Climb to 2000, then climbing right turn to 3000 direct KILMA and hold.
Autopilot coupled approach NA below 210. CAUTION, departing TEB Rwy 24 traffic climbing to 1500 MSL.			

D-ATIS 115.7 134.825	NEWARK APP CON 128.55 379.9	NEWARK TOWER 118.3 257.6	GND CON 121.8
--------------------------------	---------------------------------------	------------------------------------	-------------------------



NE-2, 11 JUN 2026 to 09 JUL 2026

NE-2, 11 JUN 2026 to 09 JUL 2026