

LOC/DME I-LSQ	APP CRS	Rwy Ldg	8205
108.7	219°	TDZE	10
Chan 24		Apt Elev	18

ILS RWY 22L (SA CAT I)

NEWARK LIBERTY INTL (EWR)

RNP APCH - GPS. From PATRN.

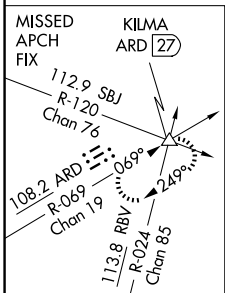
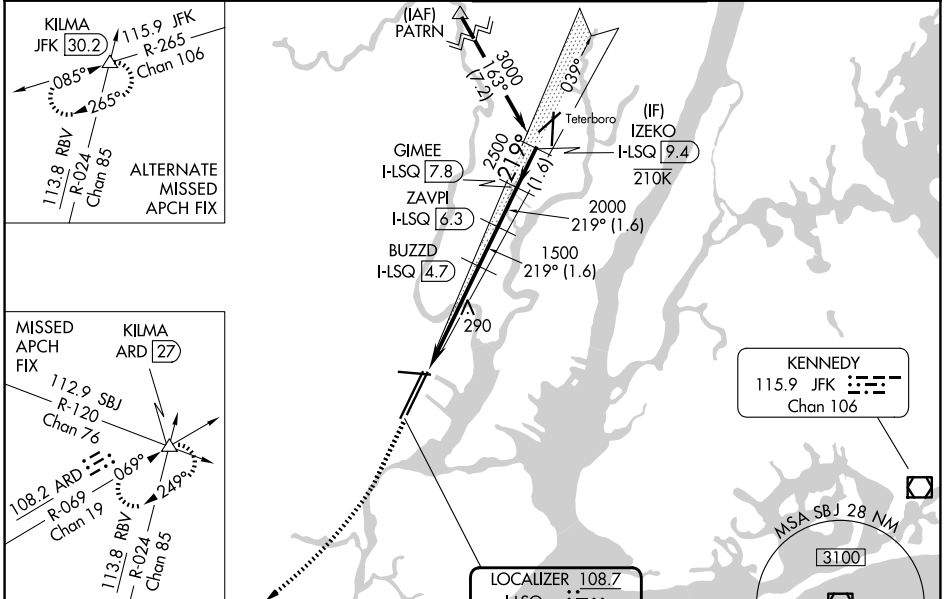
DME required. Aircraft not GPS equipped - RADAR required for procedure entry.

Requires specific OPSPEC, MSPEC, or LOA approval.
Caution, departing TEB Rwy 24 traffic climbing to 1500' MSL.

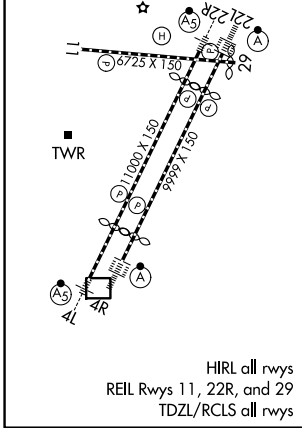
ALSF-2

MISSED APPROACH: Climb to 500 then climbing right turn to 3000 on heading 225° and ARD VOR/DME R-069 to KLMA INT/ARD 27 DME and hold.

D-ATIS 115.7 134.825	NEWARK APP CON 128.55 379.9	NEWARK TOWER 118.3 257.6	GND CON 121.8
--------------------------------	---------------------------------------	------------------------------------	-------------------------



ELEV	18	D	TDZE	10
------	----	----------	------	----



500	3000	ARD R-069	KLMA △	VGSI and ILS glidepath not coincident (VGSI Angle 3.00/TCH 60).
↑	hdg 225°			
		BUZZD I-LSQ (4.7)	ZAVPI I-LSQ (6.3)	GIMEE I-LSQ (7.8)
				IZEKO I-LSQ (9.4)
		1500	2000	2500
		1500	2000	3000
		4.5 NM	1.6 NM	1.6 NM
		1.6 NM	1.6 NM	1.6 NM
		811'		
		GS 3.00°		TCH 43

CATEGORY	A	B	C	D
S-ILS 22L	RA 150/12 150 DA 160			

SA CATEGORY I ILS - SPECIAL AIRCREW & AIRCRAFT CERTIFICATION REQUIRED

NE-2, 11 JUN 2026 to 09 JUL 2026

NE-2, 11 JUN 2026 to 09 JUL 2026