

LOC/DME I-LSQ	APP CRS	Rwy Ldg	22L	22R
108.7	219°	TDZE	10	10
Chan 24		Apt Elev	18	18

ILS or LOC RWY 22L

NEWARK LIBERTY INTL (EWR)

RNP APCH - GPS. From PATRN.

DME required. Aircraft not GPS equipped - RADAR required for procedure entry.

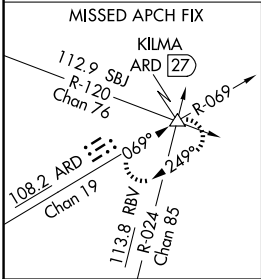
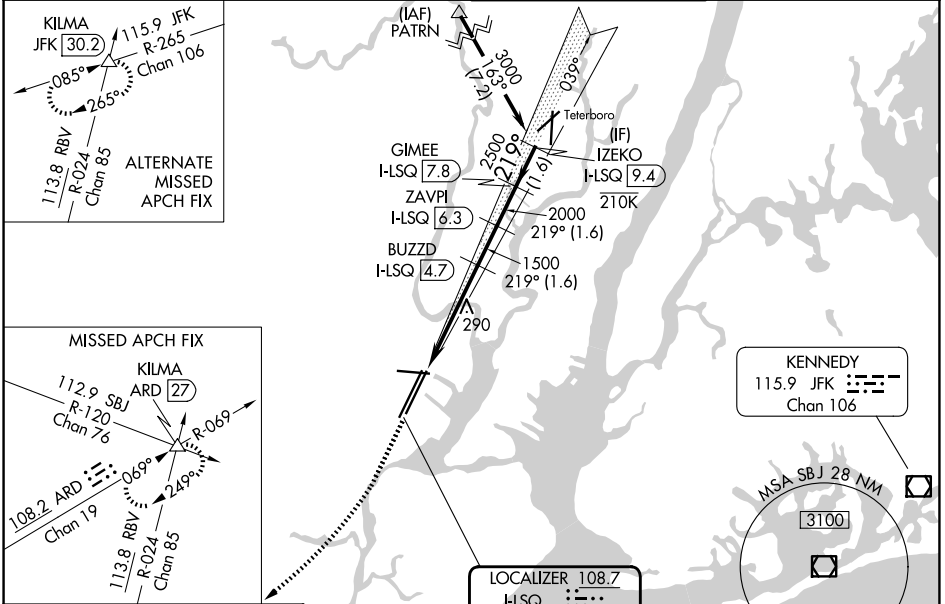
22L ALSF-2

22R MALSRL

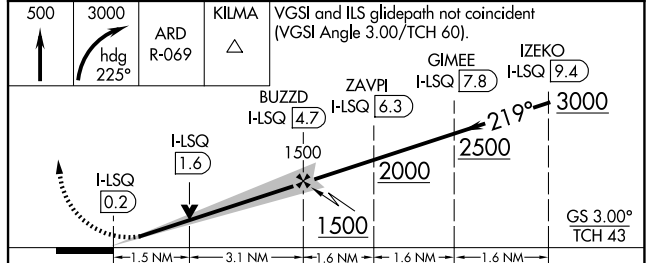
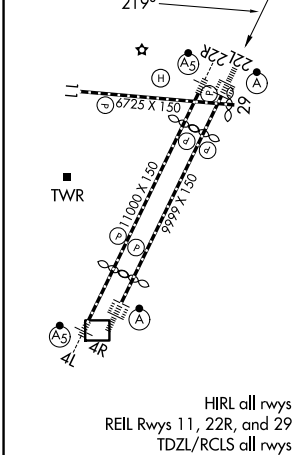
MISSED APPROACH: Climb to 500 then climbing right turn to 3000 on heading 225° and ARD VOR/DME R-069° to KILMA INT/ARD 27 DME and hold.

⚠ Circling NA south of Rwy 11-29. When Circling to Rwy 29 at night, operational VGSI required, remain on or above VGSI glidepath until threshold. Caution, departing TEB Rwy 24 traffic climbing to 1500' MSL.

D-ATIS 115.7 134.825	NEWARK APP CON 128.55 379.9	NEWARK TOWER 118.3 257.6	GND CON 121.8
--------------------------------	---------------------------------------	------------------------------------	-------------------------



ELEV 18	D	TDZE 22L 10	TDZE 22R 10
---------	----------	-------------	-------------



CATEGORY	A	B	C	D
S-ILS 22L	210/18 200 (200-1/2)			
S-LOC 22L	540/24	530 (600-1/2)	540/55	530 (600-1)
SIDESTEP RWY 22R	540/55 530 (600-1)			540-1/2 530 (600-1/2)
CIRCLING	660-1	642 (700-1)	900-2 3/4 882 (900-2 3/4)	900-3 882 (900-3)

NE-2, 11 JUN 2026 to 09 JUL 2026

NE-2, 11 JUN 2026 to 09 JUL 2026