

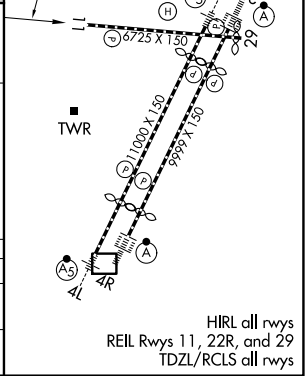
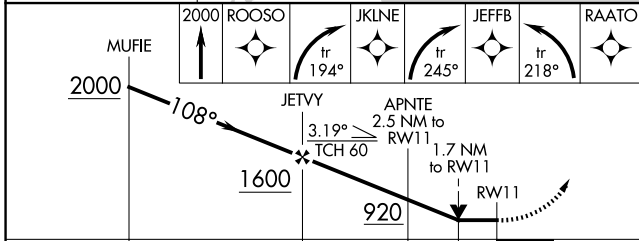
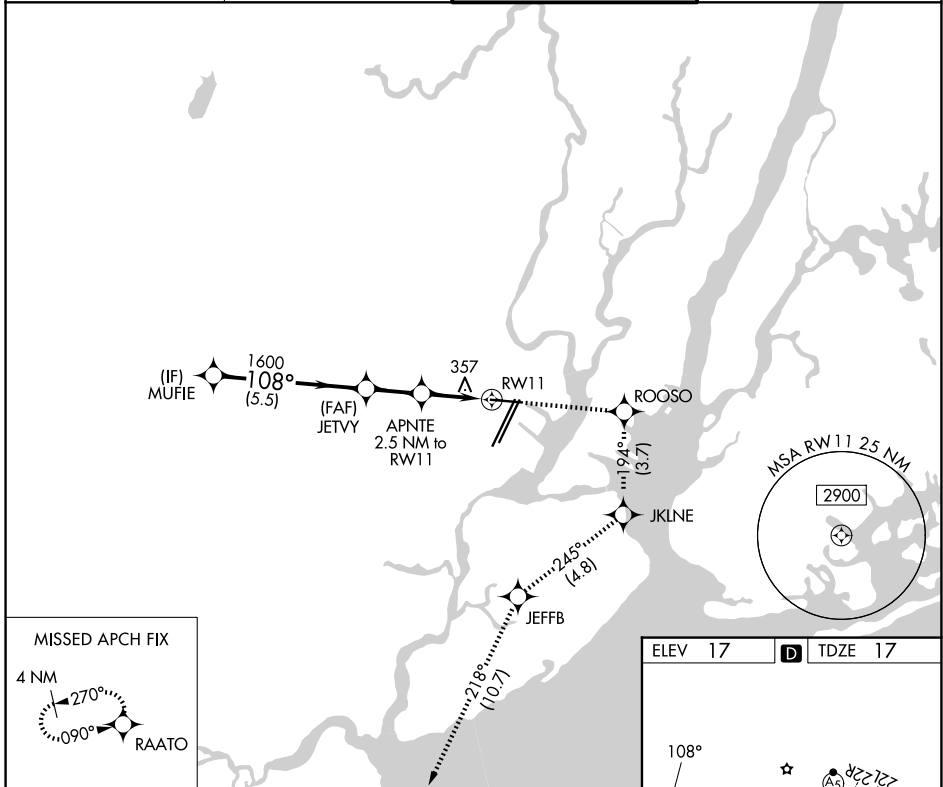
APP CRS	Rwy Ldg	6725
108°	TDZE	17
	Apt Elev	17

RNAV (GPS) RWY 11

NEWARK LIBERTY INTL (EWR)

RNP APCH - GPS.	MISSED APPROACH: (Do not exceed 230K until JKLNE) Climb to 2000 direct ROOSO and right turn on track 194° to JKLINE and right turn on track 245° to JEFFB and left turn on track 218° to RAATO and hold.
<p>▼ Circling NA south of Rwy 11-29. When Circling to Rwy 29 at night, operational VGSJ required, remain on or above VGSJ glidepath until threshold. Rwy 11 helicopter visibility reduction below RVR 4000 NA.</p> <p>▲</p>	

D-ATIS 115.7 134.825	NEWARK APP CON 128.55 379.9	NEWARK TOWER 118.3 257.6	GND CON 121.8
--------------------------------	---------------------------------------	------------------------------------	-------------------------



CATEGORY	A	B	C	D
LNVA MDA	620/55	603 (700-1)	620-1¾	603 (700-1¾)
CIRCLING	660-1	643 (700-1)	900-2¾ 883 (900-2¾)	900-3 883 (900-3)

NE-2, 11 JUN 2026 to 09 JUL 2026

NE-2, 11 JUN 2026 to 09 JUL 2026