

WAAS CH 61244 W22B	APP CRS 219°	Rwy Ldg 9559 TDZE 10 Apt Elev 18
--	------------------------	---

RNAV (GPS) RWY 22R

NEWARK LIBERTY INTL (EWR)

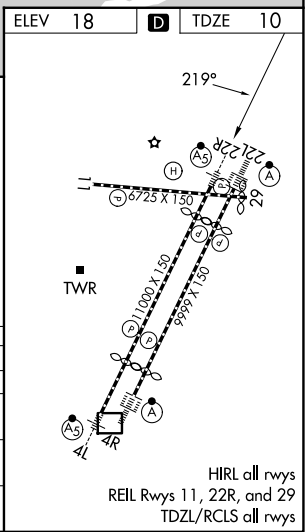
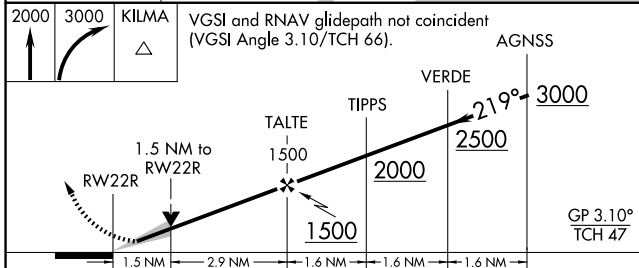
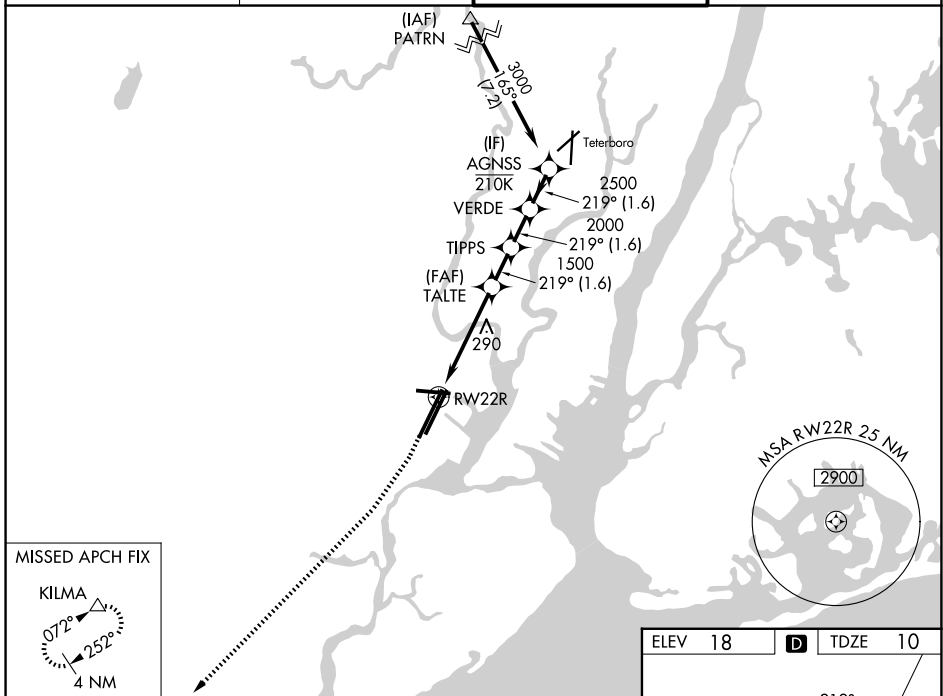
RNP APCH - GPS.

⚠ For uncompensated Baro-VNAV systems, LNAV/VNAV NA below -11°C or above 54°C. Circling NA south of Rwy 11-29. When Circling to Rwy 29 at night, operational VGSI required, remain on or above VGSI glidepath until threshold. Caution, departing TEB Rwy 24 traffic climbing to 1500 MSL.



MISSED APPROACH: Climb to 2000 then climbing right turn to 3000 direct KILMA and hold.

D-ATIS 115.7 134.825	NEWARK APP CON 128.55 379.9	NEWARK TOWER 118.3 257.6	GND CON 121.8
--------------------------------	---------------------------------------	------------------------------------	-------------------------



CATEGORY	A	B	C	D
LPV DA		210/18	200 (200-½)	
LNAV/VNAV DA		468/45	458 (500-¾)	
LNAV MDA	560/24	550 (600-½)	560/60	550 (600-1¼)
CIRCLING	660-1	642 (700-1)	900-2¾ 882 (900-2¾)	900-3 882 (900-3)

RNAV (GPS) RWY 22R

NE-2, 11 JUN 2026 to 09 JUL 2026

NE-2, 11 JUN 2026 to 09 JUL 2026