

RNAV (RNP) Z RWY 29

NEWARK LIBERTY INTL (EWR)

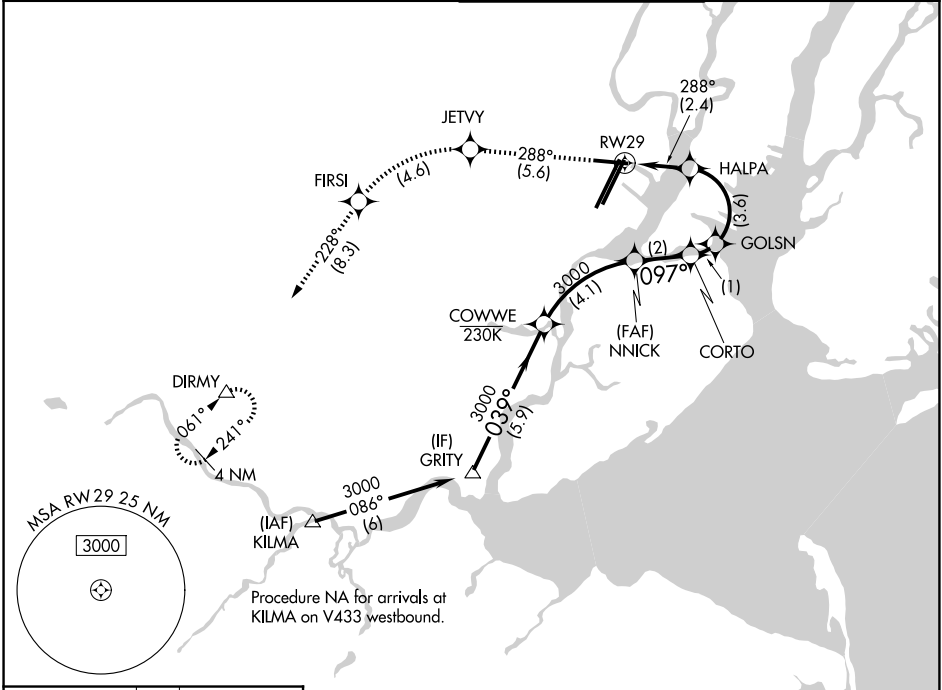
APP CRS	Rwy Ldg	6501
288°	TDZE	10
	Apt Elev	18

RNP AR APCH. RF required.

▼ Straight-in Rwy 29 at night, operational VGSI required, remain on or above VGSI glidepath until threshold. For uncompensated Baro-VNAV systems, procedure NA below -14°C or above 54°C.
 ▲ NA * Missed approach requires minimum climb of 340 feet per NM to 800.

MISSED APPROACH: Climb to 3000 on track 288° to JETVY and left turn to FIRSI, and on track 228° to DIRMY and hold.

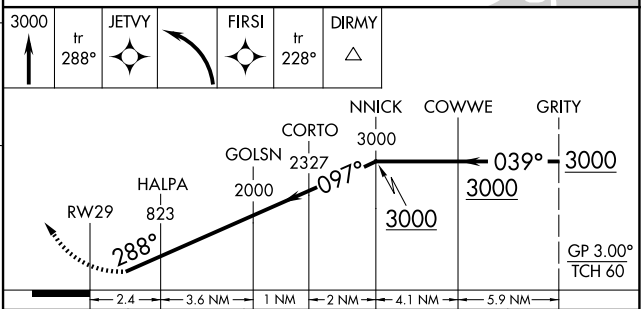
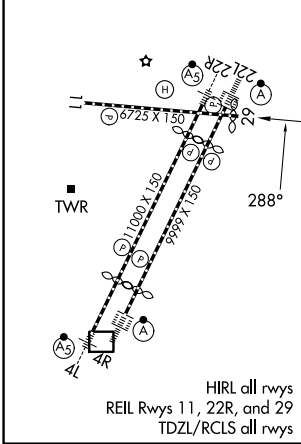
D-ATIS	NEWARK APP CON	NEWARK TOWER	GND CON
115.7 134.825	128.55 379.9	118.3 257.6	121.8



NE-2, 11 JUN 2026 to 09 JUL 2026

NE-2, 11 JUN 2026 to 09 JUL 2026

ELEV 18	D	TDZE 10
---------	----------	---------



CATEGORY	A	B	C	D
RNP 0.16 DA	466-1½	456 (500-1½)		NA
*RNP 0.30 DA	485-1½	475 (500-1½)		NA
RNP 0.30 DA	573-2	563 (600-2)		NA

AUTHORIZATION REQUIRED

RNAV (RNP) Z RWY 29