

# RNAV (RNP) Z RWY 4R

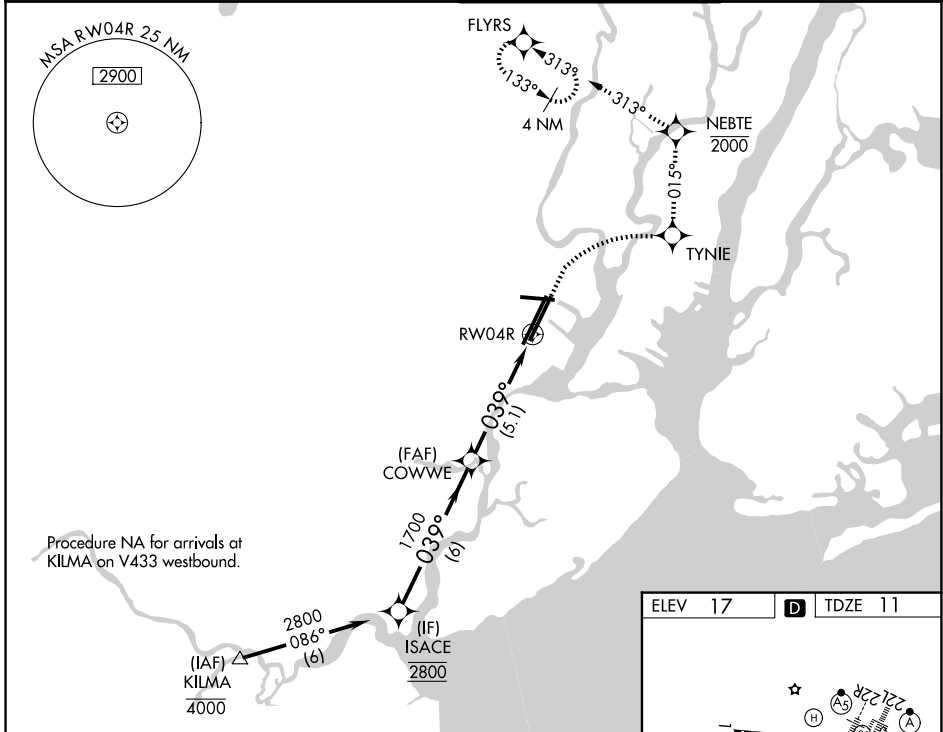
NEWARK LIBERTY INTL (EWR)

APP CRS	Rwy Ldg	<b>8809</b>
<b>039°</b>	TDZE	<b>11</b>
	Apt Elev	<b>17</b>

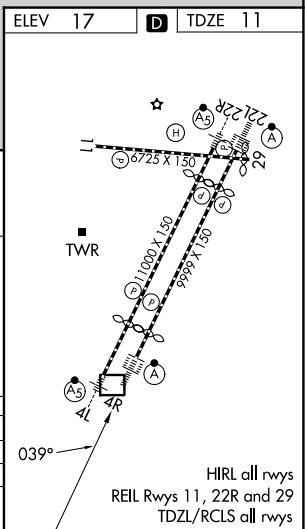
RNP AR APCH.  
 RADAR required.  
 For uncompensated Baro-VNAV systems, procedure NA below -12°C or above 54°C. For inop ALS, increase RNP 0.30 all Cats visibility to 1 1/2 SM.

ALSF-2  
 MISSED APPROACH: (Do not exceed 210K until NEBTE) Climb to 560 then climbing right turn to 2000 direct TYNIE and left turn on track 015° to NEBTE, cross NEBTE at or below 2000 then dimbing left turn to 3000 on track 313° to FLYRS and hold, continue climb-in-hold to 3000.  
 \* Missed approach requires minimum climb of 351 feet per NM to 660.

D-ATIS <b>115.7 134.825</b>	NEWARK APP CON <b>128.55 379.9</b>	NEWARK TOWER <b>118.3 257.6</b>	GND CON <b>121.8</b>
--------------------------------	---------------------------------------	------------------------------------	-------------------------



	ISACE	560	2000	TYNIE	tr 015°	NEBTE	3000	FLYRS
	2800					2000		
		VGSI and RNAV glidepath not coincident (VGSI Angle 2.95/TCH 71).						
			COWWE				RW04R	
			1700					
		6 NM		5.1 NM				
CATEGORY	A	B	C	D				
RNP 0.15 DA*		396/35	385 (400-3/8)					
RNP 0.30 DA		490/50	479 (500-1)					
<b>AUTHORIZATION REQUIRED</b>								



NE-2, 11 JUN 2026 to 09 JUL 2026

NE-2, 11 JUN 2026 to 09 JUL 2026

# RNAV (RNP) Z RWY 4R