

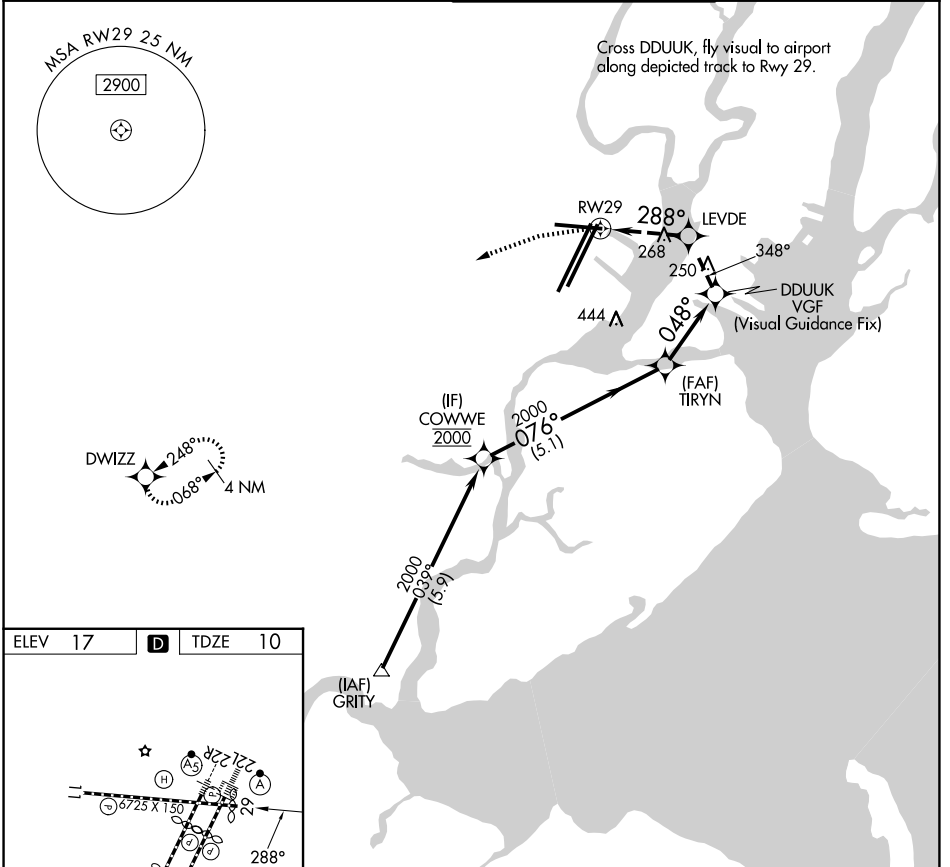
APP CRS	Rwy Ldg	<b>6501</b>
<b>288°</b>	TDZE	<b>10</b>
	Apt Elev	<b>17</b>

# RNAV (GPS) T RWY 29

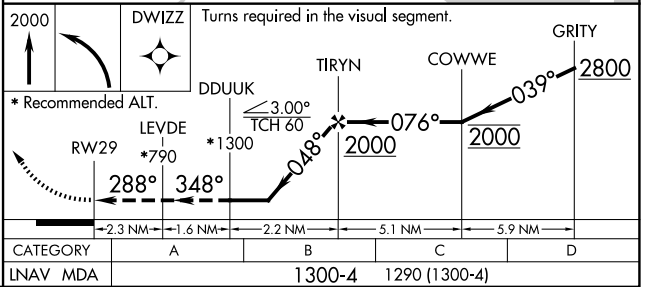
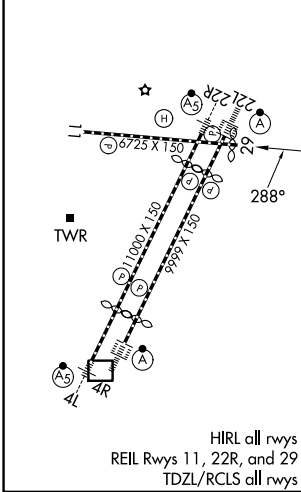
NEWARK LIBERTY INTL (EWR)

RNP APCH - GPS. RADAR required.	MISSED APPROACH: (Do not exceed 165K until Rwy 29) Climb to 2000 on the extended visual approach track to Rwy 29, then left turn direct DWIZZ and hold.
<p>▼ Rwy 29 helicopter visibility reduction below 1 SM NA. Straight-in Rwy 29 at night, operational VGSI required, remain at or above VGSI glidepath until threshold.</p>	

D-ATIS <b>115.7 134.825</b>	NEWARK APP CON <b>128.55 379.9</b>	NEWARK TOWER <b>118.3 257.6</b>	GND CON <b>121.8</b>
--------------------------------	---------------------------------------	------------------------------------	-------------------------



ELEV 17	<b>D</b>	TDZE 10
---------	----------	---------



NE-2, 11 JUN 2026 to 09 JUL 2026

NE-2, 11 JUN 2026 to 09 JUL 2026