

RNAV (GPS) W RWY 29

NEWARK LIBERTY INTL (EWR)

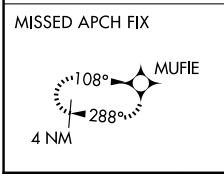
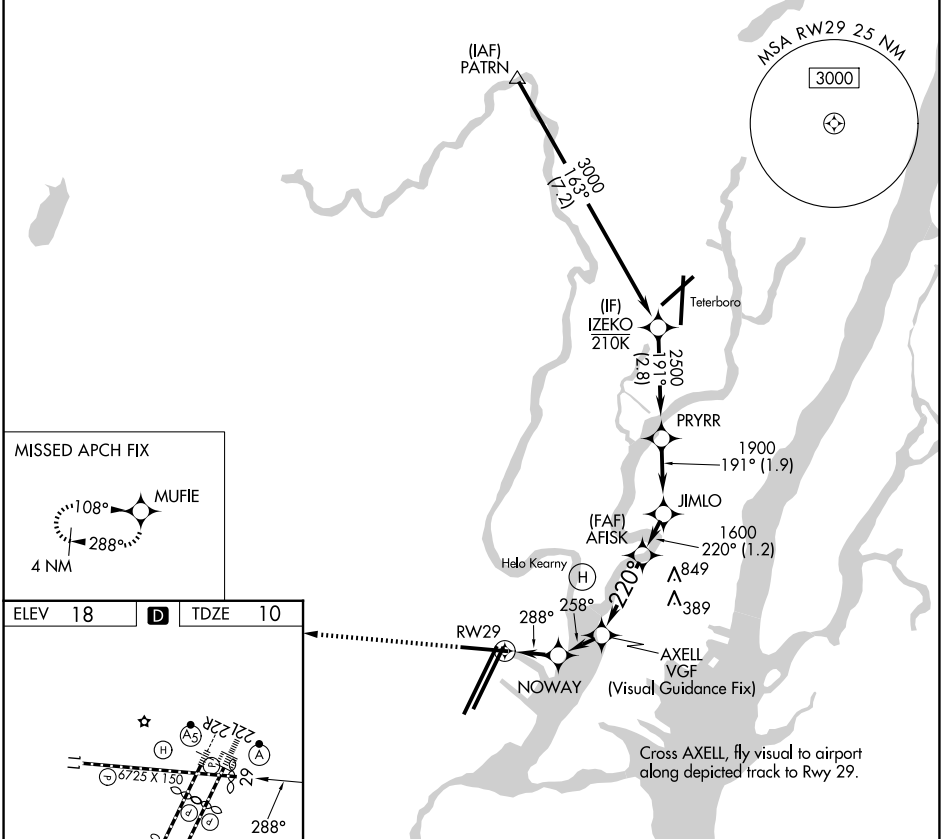
APP CRS	Rwy Ldg	6501
288°	TDZE	10
	Apt Elev	18

RNP APCH - GPS.
 RADAR required.

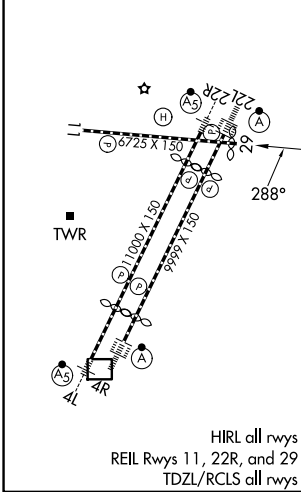
▼ Rwy 29 helicopter visibility reduction below 1 SM NA. Straight-in Rwy 29 at night, operational VGSJ required, remain at or above VGSJ glidepath until threshold.
▲ Caution, departing TEB Rwy 24 traffic climbing to 1500' MSL.

MISSED APPROACH: (Do not exceed 1.65K until Rwy 29) Climb to 2000 on the extended visual approach track to Rwy 29, then climb to 3000 direct MUFIE and hold.

D-ATIS 115.7 134.825	NEWARK APP CON 128.55 379.9	NEWARK TOWER 118.3 257.6	GND CON 121.8
--------------------------------	---------------------------------------	------------------------------------	-------------------------



ELEV 18	D	TDZE 10
---------	----------	---------



2000 ↑ to RWY29	3000 ↑ MUFIE	Turns required in the visual segment. * Recommended ALT.		IZEKO		
HIRL all rws REIL Rws 11, 22R, and 29 TDZL/RCLS all rws		CATEGORY LNNAV MDA	A	B	C	D
		880-3		870 (900-3)		

NE-2, 11 JUN 2026 to 09 JUL 2026

NE-2, 11 JUN 2026 to 09 JUL 2026